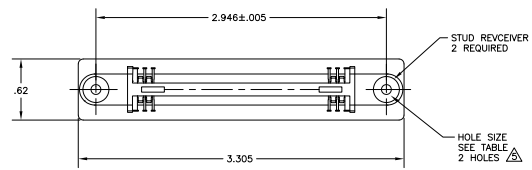
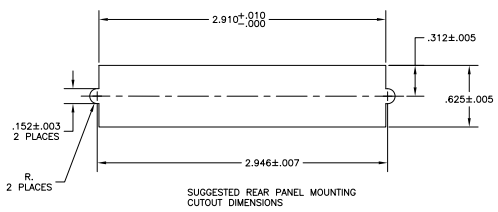
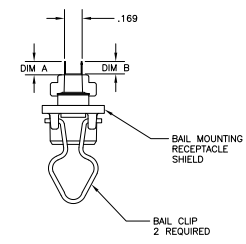
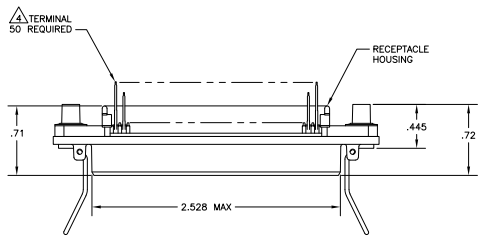


THIS DRAWING IS UNPUBLISHED. REVISIONS FOR MODIFICATION. ALL RIGHTS RESERVED.

| REV | DATE                      | DESCRIPTION | BY        | CHK    |
|-----|---------------------------|-------------|-----------|--------|
| B   | REVISED PER ECO-08-007327 |             | 23/JAL/08 | BM WM  |
| B1  | REVISED PER ECO-10-000444 |             | 19/JAN/10 | KK HMR |



1. THE CONTACT SURFACES OF THE TERMINALS ARE COATED WITH LUBRICANT.
- ⚠ ALL DIMENSIONS SHOWN ARE FOR REFERENCE ONLY UNLESS OTHERWISE SPECIFIED.
  - ⚠ MATERIAL:  
HOUSING - THERMOPLASTIC, BLACK  
TERMINAL - PHOS BRONZE PLATED WITH EITHER .000030 MINIMUM GOLD PLATE OR GOLD FLASH OVER PALLADIUM NICKEL PLATE, .000030 MINIMUM TOTAL ON MATING SURFACE, .000120 MINIMUM TIN PLATE ON TAILS OVER .000050 MINIMUM NICKEL UNDERPLATE OVER ENTIRE TERMINAL.  
STUD RECEIVER - STAINLESS STEEL  
BAIL CLIP - STAINLESS STEEL  
SHIELD - NICKEL PLATED DIE CASTING.
  - ⚠ CENTER-TO-CENTER SPACING OF TERMINALS IS .085.
  - ⚠ HOLES TO BE TAPPED AFTER PLATING.
  - ⚠ OBSOLETE PARTS: OBSOLETE OIS STREAMLINING PER D.RENAUD/D.SINISI



|   |                       |                      |           |   |       |           |
|---|-----------------------|----------------------|-----------|---|-------|-----------|
| OBSOLETE  | 232 + PANEL THICKNESS | .197 + PCB THICKNESS | 4-40      | .185  | .200  | 5554216-8 |
|   | PANEL SIDE            | PCB SIDE             | UNC-2B    | .120  | .135  | 5554216-3 |
| RECOMMENDED HARDWARE FOR SCSI (PAN HEAD SCREW LENGTH) |                       |                      | HOLE SIZE | DIM B   | DIM A | PART NO   |
| THIS DRAWING IS A CONTROLLED DOCUMENT.                |                       |                      |           |   |       |           |
| DESIGNED BY   | DATE                  | REVISED BY           | DATE      | Tels Electronics Corporation<br>Harrisburg, PA 17105-3608 |       |           |
| DRW   | 10/07/99              | REV                  | 01/08/00  | RCPT ASSY, 50 POSN, VERT MTD, SHLD, BAIL, LK, CHAMP       |       |           |
| CHK   |                       | APP                  |           | SIZE  | DATE  | ISSUE NO  |
| APP   |                       | CHK                  |           | A1  | 00779 | 5554216   |
| CUSTOMER DRAWING                                      |                       |                      |           | SCALE   | SHEET | REV       |
|   |                       |                      |           | 2:1   | 1     | B1        |