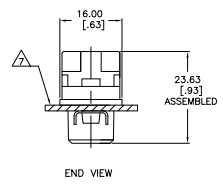
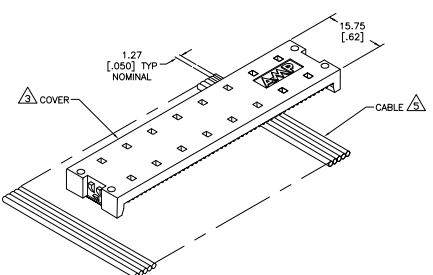
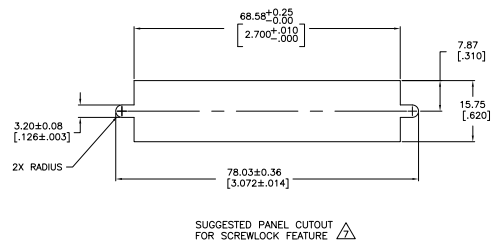
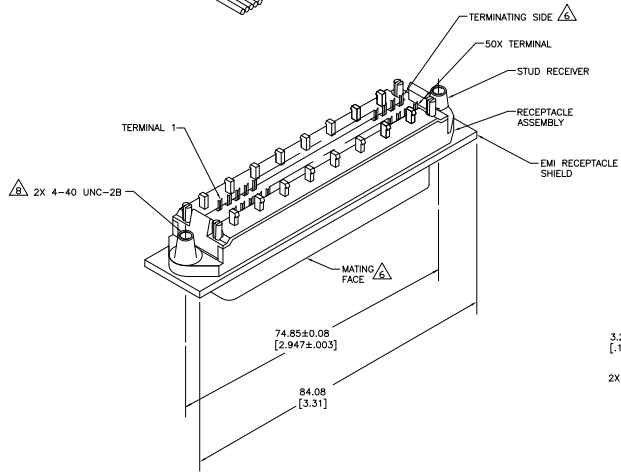


THIS DRAWING IS UNPUBLISHED. ALL RIGHTS RESERVED.
 © 2008 BY TYS ELECTRONICS CORPORATION

REV	DATE	DESCRIPTION	BY	CHK	APP
GP 00					
B		REVISED FOR ECO-08-02737			



- 1. THE CONTACT SURFACES OF THE TERMINALS ARE COATED WITH LUBRICANT.
- △ MATERIAL:
 HOUSING & COVER: POLYPHENYLENE OXIDE (BLACK).
 TERMINALS: PHOS BRONZE PLATED WITH EITHER 0.76μm [.000030] MINIMUM GOLD PLATE OR GOLD FLASH OVER PALLADIUM NICKEL PLATE, 0.76μm [.000030] MIN TOTAL ON MATING SURFACE. GOLD FLASH PLATED ON TERMINATING SIDE. 1.27μm [.000050] MINIMUM NICKEL UNDERPLATE OVER ENTIRE TERMINAL.
 EMI SHIELD: NICKEL PLATED DIE CASTING.
 STUD RECEIVER: STAINLESS STEEL.
- △ COVER SHOWN LOOSE BUT SHIPPED ASSEMBLED.
- 4. WIRE RANGE: 26 AWG SOLID THRU 30 AWG SOLID AND 28 AWG STRANDED RIBBON CABLE.
- △ FLAT CABLE SHALL BE FURNISHED BY CUSTOMER.
- △ MATING FACE CONSISTS OF TWO ROWS OF TERMINALS ON 2.16 [.085] CENTERS. TERMINATING SIDE CONSISTS OF TERMINALS ON 2.54 [.100] CENTERS FOR AN EFFECTIVE 1.27 [.050] TERMINATION.
- △ PANEL THICKNESS RANGE: 1.58 [.062] MAX.
- △ HOLES TO BE TAPPED AFTER PLATING.
- △ ALL DIMENSIONS SHOWN ARE MAXIMUM UNLESS OTHERWISE SPECIFIED.



5554436-2
PART NUMBER

THIS DRAWING IS A CONTROLLED DOCUMENT.		BY: MCMMASTER	11/09/04	BY: TYS Electronics	TYS Electronics Corporation
DRAWN BY: MCMMASTER		DATE: 11/09/04	DATE: 11/09/04	Harrisburg, PA 17105-3608	
CHECKED BY: MCMMASTER		DATE: 11/09/04	DATE: 11/09/04	EMI RECEPTACLE ASSEMBLY, 50 POSITION, LOW PROFILE, SHIELDED, SCREEN LOCK, CHAMP LATCH	
APPROVED BY: MCMMASTER		DATE: 11/09/04	DATE: 11/09/04	SIZE: A1	DATE: 10/07/09
CUSTOMER DRAWING		DATE: 11/09/04	DATE: 11/09/04	SIZE: 2:1	REV: 1