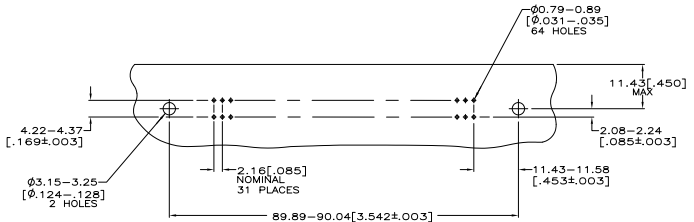


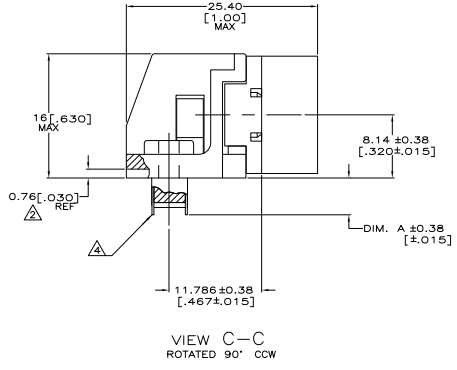
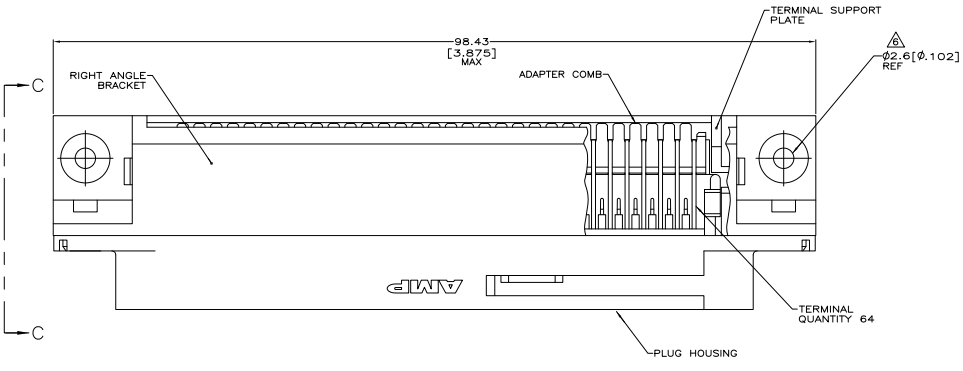
THIS DRAWING IS UNPUBLISHED. ALL RIGHTS RESERVED.  
 © 2005 BY TYS ELECTRONICS CORPORATION

REV	DATE	DESCRIPTION	BY	CHK	APP
00					
B		REVISED FOR ECO-08-02737			

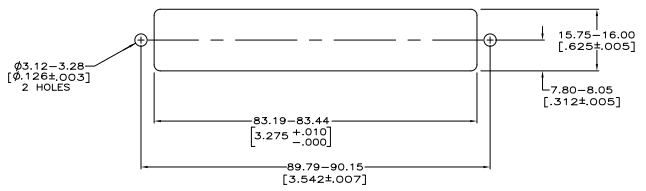


SUGGESTED PRINTED CIRCUIT BOARD MOUNTING DIMENSIONS SCALE 2:1

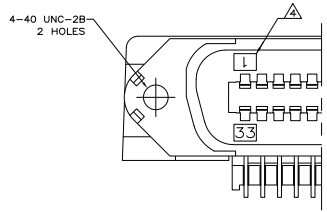
- △ MATERIAL: HOUSING, BRACKET, PLATE AND COMB - THERMOPLASTIC, BLACK, 94V-0 RATED. TERMINALS - HIGH STRENGTH COPPER ALLOY PLATED WITH EITHER 0.76μm [0.00030] MIN GOLD PLATE OR GOLD FLASH OVER PALLADIUM NICKEL PLATE, 0.76μm [0.00030] MIN TOTAL ON MATING SURFACE, 3.05μm [0.00120] MIN TIN PLATE ON TAILS. ALL OVER 1.27μm [0.00050] MIN NICKEL UNDERPLATE OVER ENTIRE TERMINAL.
- △ TERMINAL SUPPORT PLATE CLEARANCE FOR TERMINAL STRAIN RELIEF AND FLUX REMOVAL.
- △ MAXIMUM PANEL THICKNESS: 1.57 [0.062].
- △ TERMINAL 1 IS LOCATED IN THIS ROW FOR STANDARD ORIENTATION, 5552745-1 AND -5.
- △ DETAIL "A" IS VIEWED FROM MATING SIDE OF PLUG ASSEMBLY.
- △ FOR USE WITH A NO.4 BT TYPE SELF-TAPPING SCREW.
- 7. IF TERMINALS DO NOT EXTEND BELOW COMB, THEN COMB SHOULD BE PARTIALLY RETRACTED BEFORE INSERTING CONNECTOR INTO PRINTED CIRCUIT BOARD.



VIEW C-C ROTATED 90° CCW



SUGGESTED REAR PANEL MOUNTING CUTOUT DIMENSIONS SCALE 2:1



DETAIL A STANDARD ORIENTATION

INCHES	MILLIMETERS	DESCRIPTION	PART NUMBER
2.54 [1.00]	SELF-TAPPING	SEE DETAIL A	5552745-5
4.75 [1.87]	SELF-TAPPING	SEE DETAIL A	5552745-1
DIM. A		TYPE OF MOUNTING	DESCRIPTION
2.54 [1.00]		SELF-TAPPING	SEE DETAIL A
4.75 [1.87]		SELF-TAPPING	SEE DETAIL A

THIS DRAWING IS A CONTROLLED DOCUMENT.		BY	DATE	REVISED	BY	DATE	REVISED
DRAWN BY		W. WILMSLEY	11/05/05	1	W. WILMSLEY	11/05/05	1
CHECKED BY							
APPROVED BY							
TITLE		PLUG ASSEMBLY, 64 POSITION, RIGHT ANGLE, SELF-TAPPING, CHAMP-LOCK		DRAWING NO.		A100779G=5552745	
CUSTOMER DRAWING		DATE		REV		BY	
		2005-08-02		1		WM	

44 480 REV 2/2005