

4

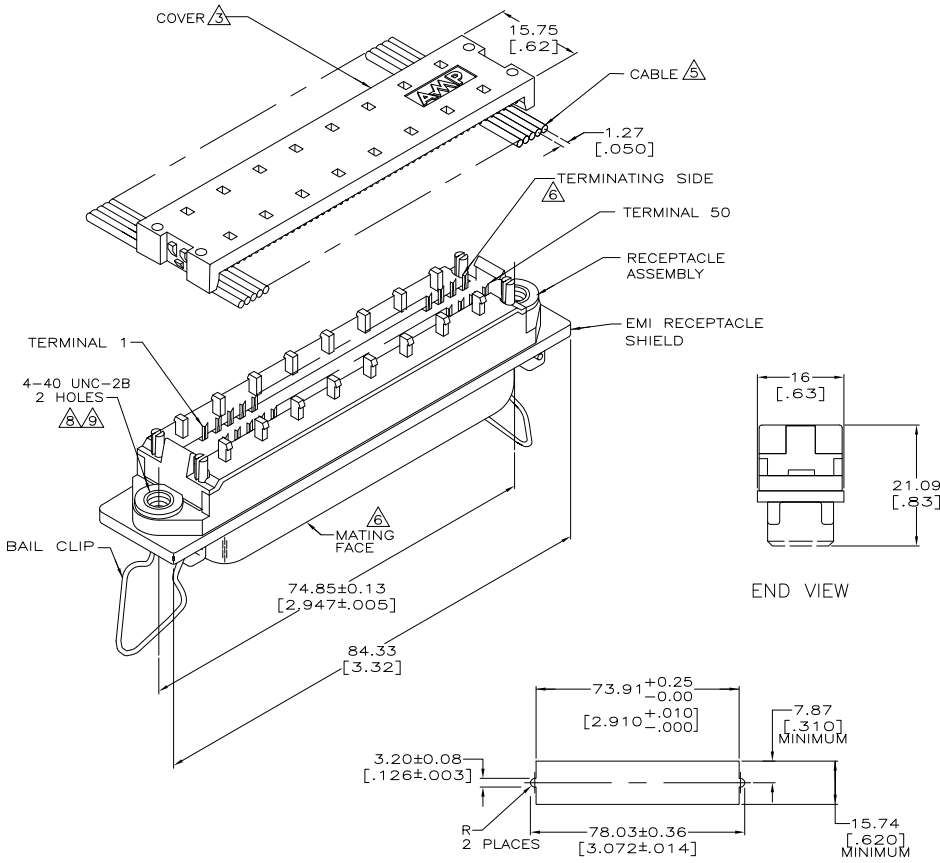
3

2

1

THIS DRAWING IS UNPUBLISHED. RELEASED FOR PUBLICATION
 © COPYRIGHT BY TYCO ELECTRONICS CORPORATION. ALL RIGHTS RESERVED.

LOC		DIST		REVISIONS		
GP	00	F	LN	DESCRIPTION	DATE	BY
		G		REVISED PER ECO-08-007327	17APROB	BM WM



1. THE CONTACT SURFACES OF THE TERMINALS ARE COATED WITH LUBRICANT.
- △ MATERIAL:
HOUSING & COVER - POLYPHENYLENE OXIDE (BLACK).
TERMINALS - PHOS BRONZE PLATED WITH EITHER 0.76µm [.000030] MINIMUM GOLD PLATE OR GOLD FLASH OVER PALLADIUM NICKEL PLATE, 0.76µm [.000030] MIN TOTAL ON MATING SURFACE, GOLD FLASH PLATED ON TERMINATING SIDE, 1.27µm [.000050] MINIMUM NICKEL UNDERPLATE OVER ENTIRE TERMINAL.
EMI SHIELD - NICKEL PLATED DIE CASTING.
BAIL CLIPS - PASSIVATED STAINLESS STEEL.
- △ COVER SHOWN LOOSE BUT SHIPPED ASSEMBLED.
4. WIRE RANGE: 26 AWG SOLID THRU 30 AWG SOLID AND 28 AWG STRANDED RIBBON CABLE.
- △ FLAT CABLE SHALL BE FURNISHED BY CUSTOMER.
- △ MATING FACE CONSISTS OF TWO ROWS OF TERMINALS ON 2.16 [.085] CENTERS. TERMINATING SIDE CONSISTS OF TERMINALS ON 2.54 [.100] CENTERS FOR AN EFFECTIVE 1.27 [.050] TERMINATION.
- △ PANEL THICKNESS RANGE: 1.58 [.062] MAXIMUM.
- △ HOLES ARE TAPPED AFTER PLATING.
- △ MINOR CRACKS ALLOWED ON POST DUE TO FORMING. SHIELD RETENTION TO ASSEMBLY: 20.41kg [45lb].
- △ ALL DIMENSIONS SHOWN ARE MAXIMUM UNLESS OTHERWISE SPECIFIED.

SUGGESTED PANEL CUTOUT FOR SCREWLOCK FEATURE △
SCALE 1:1

THIS DRAWING IS A CONTROLLED DOCUMENT.		DATE: 12-16-93	PART NO	
DRAWN BY: K. TILLMAN/JTA		DATE: 9-1-94	554902-1	
CHECKED BY: C. WHITT		DATE: 9-8-94	TYCO ELECTRONICS Corporation Harrisburg, PA 17105-3608	
DIMENSIONS: mm [INCHES]		PRODUCT SPEC: 108-6076	EMI RECEPTACLE ASSEMBLY, 50 POSITION, LOW PROFILE, SHIELDED, BAIL LOCK.	
TOLERANCES UNLESS OTHERWISE SPECIFIED:		APPLICATION SPEC: 114-6030	SIZE: A2	ONE CODE: 00779
0 PLG ±	1 PLG ±	2 PLG ±	3 PLG ±	4 PLG ±
ANGLES ±	FINISH △			
MATERIAL △		WEIGHT -	SCALE: 2:1	SHEET: 1 of 1
CUSTOMER DRAWING		REV: G		

AMP 1471-9 REV 31MMR2000

554902

A