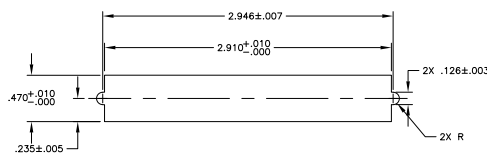


SUGGESTED PRINTED BOARD
 MOUNTING DIMENSIONS
 SCALE 2:1



SUGGESTED BRACKET
 MOUNTING CUTOUT DIMENSIONS
 SCALE 2:1

- △ MATERIAL:
 HOUSING & ADAPTER COMB - POLYESTER, BLACK.
 BAIL CLIPS - PASSIVATED STAINLESS STEEL.
 RECEPTACLE SHIELD - BRIGHT NICKEL PLATED OVER COPPER PLATED ZINC.
 TERMINALS - HIGH STRENGTH COPPER ALLOY PLATED WITH EITHER .000030
 MIN GOLD PLATE OR GOLD FLASH OVER PALLADIUM NICKEL PLATE, .000030
 MIN TOTAL ON MATING SURFACE, .000120 MIN TIN PLATE ON TAILS. ALL
 OVER .000050 MIN NICKEL UNDERPLATE OVER ENTIRE TERMINAL.
 GROUND BRACKET - TIN PLATED CARBON STEEL.
- THE CONTACT SURFACES OF THE TERMINALS ARE COATED WITH LUBRICANT.
 - CENTER-TO-CENTER SPACING OF TERMINALS IS .085 NOMINAL.
 - ALL DIMENSIONS SHOWN ARE MAXIMUM UNLESS OTHERWISE SPECIFIED.
 - △ TERMINAL 1 LOCATED IN THIS ROW FOR STANDARD ORIENTATION.
 - △ GROUNDING BRACKET RETAINS CONNECTOR IN .062 THICK PC BOARD WITHOUT
 ADDITIONAL HARDWARE.
 - △ GROUNDING BRACKET LOCATES CONNECTOR FLUSH WITH TOP OF PC BOARD AND
 SPRING LOCKS BENEATH.
 - △ CYLINDRICAL SHAPE OFFERS 180° OF SOLDERING SURFACE.
 - △ SURFACE AREA OF GROUNDING BRACKET BELOW. PC BOARD SHALL PASS
 SOLDERABILITY REQUIREMENTS IN ACCORDANCE WITH AMP SPEC 109-11-2.
 DISCOLORATION, SCRATCHES, SPOTS AND OTHER COSMETIC DEFICIENCIES TYPICAL OF
 BARREL PLATING PROCESSES ARE ACCEPTABLE PROVIDING PARTS PASS 24 HOUR
 EXPOSURE AT 95% RH AT 40°C WITHOUT EVIDENCE OF CORROSION.
 - △ BRACKET SUPPLIED BY CUSTOMER.
 - △ TERMINAL 1 LOCATED IN THIS ROW FOR REVERSE ORIENTATION.
 - △ OBSOLETE PARTS: OBSOLETE CIS STREAMLINING PER D.RENAUD/D.SINISI

OBSOLETE	REVERSE, VIEW C-C	AS SHOWN	5555149-3
	STANDARD, VIEW A-A	WITHOUT BAIL CLIPS	5555149-2
	ORIENTATION	AS SHOWN	5555149-1
		DESCRIPTION	PART NUMBER

THIS DRAWING IS A CONTROLLED DOCUMENT.		REVISIONS	DATE	BY	CHK	APP
REVISIONS	DATE	BY	CHK	APP		
1	00779	G	5555149			
CUSTOMER DRAWING		TE Connectivity				
RCPT ASSY, LFF, EXT SHLD, RTANG, 50 POSN, BD LK, BAIL LK, CHAMP						
DRAWN BY		CHECKED BY				
DATE		DATE				
1		1				
C2						