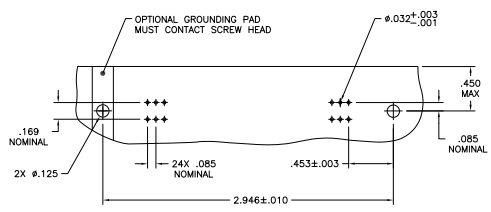
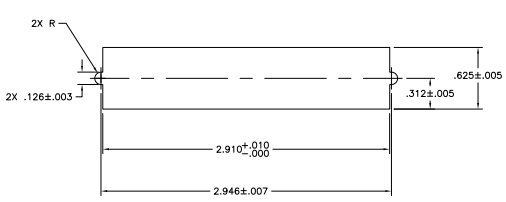
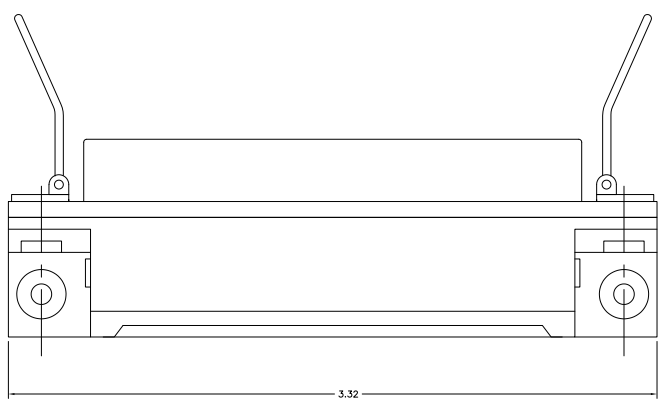


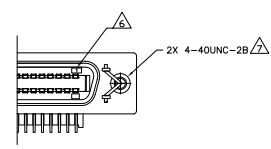
REV	DATE	DESCRIPTION	BY	CHK	APP
00					
B		REVISED FOR ECO-08-02737			



SUGGESTED PRINTED CIRCUIT BOARD MOUNTING DIMENSIONS

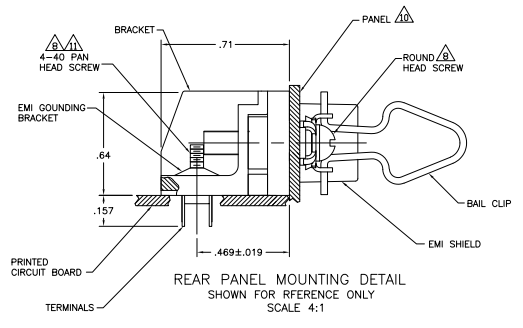


SUGGESTED REAR PANEL MOUNTING SHOWN FOR REFERENCE ONLY



DETAIL A STANDARD ORIENTAION

- 1. MATERIAL: HOUSING, BRACKET, ADAPTER COMB & TERMINAL SUPPORT PLATE - THERMOPLASTIC (BLACK). EMI SHIELD - BRIGHT NICKEL OVER COPPER PLATED DIE CASTING. TERMINALS - HIGH STRENGTH COPPER ALLOY PLATED WITH EITHER .00030 MIN GOLD PLATE OR GOLD FLASH OVER PALLADIUM NICKEL PLATE, .00030 MIN TOTAL ON MATING SURFACE. .000120 MIN TIN PLATE ON TAILS. ALL OVER .000050 MIN NICKEL UNDERPLATE OVER ENTIRE TERMINAL. BAIL CLIP - PASSIVATED STAINLESS STEEL.
- 2. THE CONTACT SURFACES OF THE TERMINALS ARE COATED WITH LUBRICANT.
- 3. CENTER-TO-CENTER SPACING OF TERMINALS IS .085 NOMINAL.
- 4. ALL DIMENSIONS SHOWN ARE MAXIMUM UNLESS OTHERWISE SPECIFIED.
- 5. DETAIL A IS VIEWED FROM MATING SIDE OF RECEPTACLE ASSEMBLY.
- 6. TERMINAL 1 IS LOCATED IN THIS ROW FOR STANDARD ORIENTATION.
- 7. HOLES ARE TAPPED AFTER PLATING.
- 8. SCREWS SHOWN FOR REFERENCE ONLY. RECOMMENDED HARDWARE KIT 554273-2 FOR USE WITH THIS PART NUMBER.
- 9. BAIL CLIPS & EMI SHIELD ARE ASSEMBLED TO CONNECTOR BEFORE SHIPMENT.
- 10. PANEL THICKNESS RANGE: .062 MAX.
- 11. STAINLESS STEEL SCREWS RECOMMENDED BECAUSE OF CONTACT WITH SOLDER BATH.



5554901-1
PART NUMBER

THIS DRAWING IS A CONTROLLED DOCUMENT.		APPROVED	DATE	BY	DATE	BY
DESIGNED	BY	APPROVED	DATE	BY	DATE	BY
DRAWN	BY	APPROVED	DATE	BY	DATE	BY
CHECKED	BY	APPROVED	DATE	BY	DATE	BY
ISSUED	BY	APPROVED	DATE	BY	DATE	BY
CUSTOMER DRAWING		A1 00779		5554901		REVISED TO
		SCALE 1:1		SHEET 1 OF 1		REV B