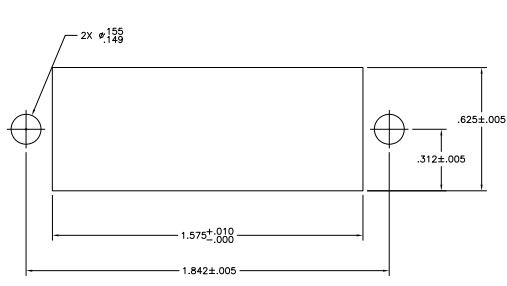
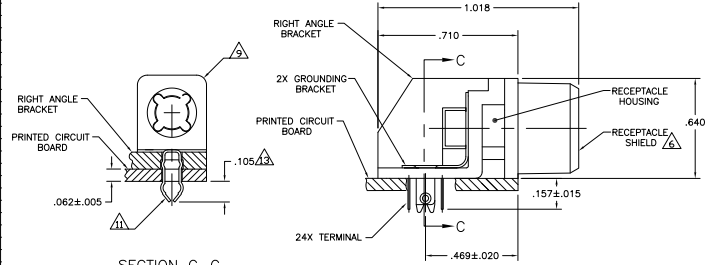


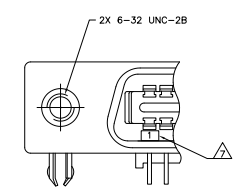
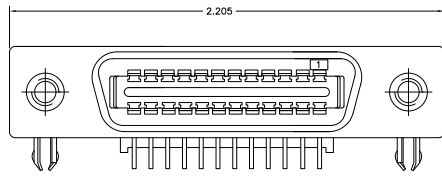
SUGGESTED PRINTED CIRCUIT BOARD MOUNTING DIMENSIONS



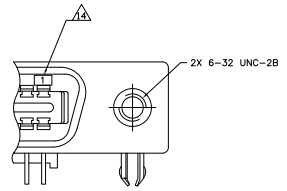
SUGGESTED REAR PANEL MOUNTING CUTOUT DIMENSION



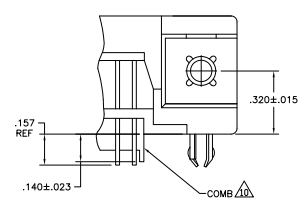
REAR PANEL MOUNTING DETAIL SHOWN FOR REFERENCE ONLY



DETAIL A REVERSE ORIENTATION



DETAIL D STANDARD ORIENTATION



DETAIL B

- △ MATERIAL: HOUSING, BRACKET, ADAPTER COMB & TERMINAL SUPPORT PLATE - POLYESTER, BLACK.
- RECEPTACLE SHIELD - BRIGHT NICKEL OVER COPPER PLATED DIE CASTING.
- TERMINALS - HIGH STRENGTH COPPER ALLOY PLATED WITH EITHER .00030 MIN GOLD PLATE OR GOLD FLASH OVER PALLADIUM NICKEL PLATE. .00030 MIN TOTAL ON MATING SURFACE. .000120 MIN TIN-LEAD PLATE ON TAILS. ALL OVER .000050 MIN NICKEL UNDERPLATE OVER ENTIRE TERMINAL.
- GROUND BRACKET - TIN-LEAD PLATED CARBON STEEL.
- 2. THE CONTACT SURFACES OF THE TERMINALS ARE COATED WITH CENTRAL LUBRICANT.
- 3. CENTER TO CENTER SPACING OF TERMINALS IS 0.85 NOMINAL.
- △ ALL DIMENSIONS ARE MAXIMUM UNLESS OTHERWISE SPECIFIED.
- △ DETAILS "A" & "D" ARE VIEWED FROM MATING SIDE OF THE RECEPTACLE ASSEMBLY.
- △ SHIELD IS ASSEMBLED TO RECEPTACLE BEFORE SHIPMENT.
- △ TERMINAL 1 IS LOCATED IN THIS ROW FOR REVERSE ORIENTATION, SEE DETAIL A.
- 8. PANEL THICKNESS RANGE: .062 MAXIMUM.
- △ GROUNDING BRACKET RETAINS CONNECTOR IN .062 THICK PC BOARD WITHOUT ADDITIONAL HARDWARE.
- △ IF TERMINALS DO NOT EXTEND BELOW COMB, THEN COMB SHALL BE PARTIALLY RETRACTED, BEFORE INSERTING CONNECTOR INTO THE PC BOARD.
- △ GROUNDING BRACKET LOCATES CONNECTOR FLUSH WITH TOP OF PC BOARD AND SPRING LOCKS BENEATH.
- △ CYLINDRICAL SHAPE OFFERS 180° OF SOLDERING SURFACE.
- △ SURFACE AREA OF GROUNDING BRACKET BELOW PC BOARD SHALL PASS SOLDERABILITY REQUIREMENTS IN ACCORDANCE WITH AMP SPECIFICATION 109-11-2. DISCOLORATION, SCRATCHES, SPOTS AND OTHER COSMETIC DEFICIENCIES TYPICAL OF BARREL PLATING PROCESS ARE ACCEPTABLE PROVIDING PARTS PASS 24 HOUR EXPOSURE AT 95% RH AT 40°C, WITHOUT EVIDENCE OF CORROSION.
- △ TERMINAL 1 LOCATED IN THIS ROW FOR STANDARD ORIENTATION, SEE DETAIL D.

D	STANDARD	554423-2
A	REVERSE	554423-1
SEE DETAIL	ORIENTATION	PART NUMBER

THIS DRAWING IS A CONTROLLED DOCUMENT.		BY SEAL	DATE	BY MELLUMER	DATE
INCHES	UNLESS OTHERWISE SPECIFIED				
FRONT VIEW					
TOP VIEW					
RIGHT SIDE VIEW					
LEFT SIDE VIEW					
REVISIONS					
DATE	SIZE	SCALE	DRAWING NO.	REVISED TO	REWORKED TO
			A100779	Q=554923	
CUSTOMER DRAWING		DATE	REV	BY	APP
		4-1	1		E