

4

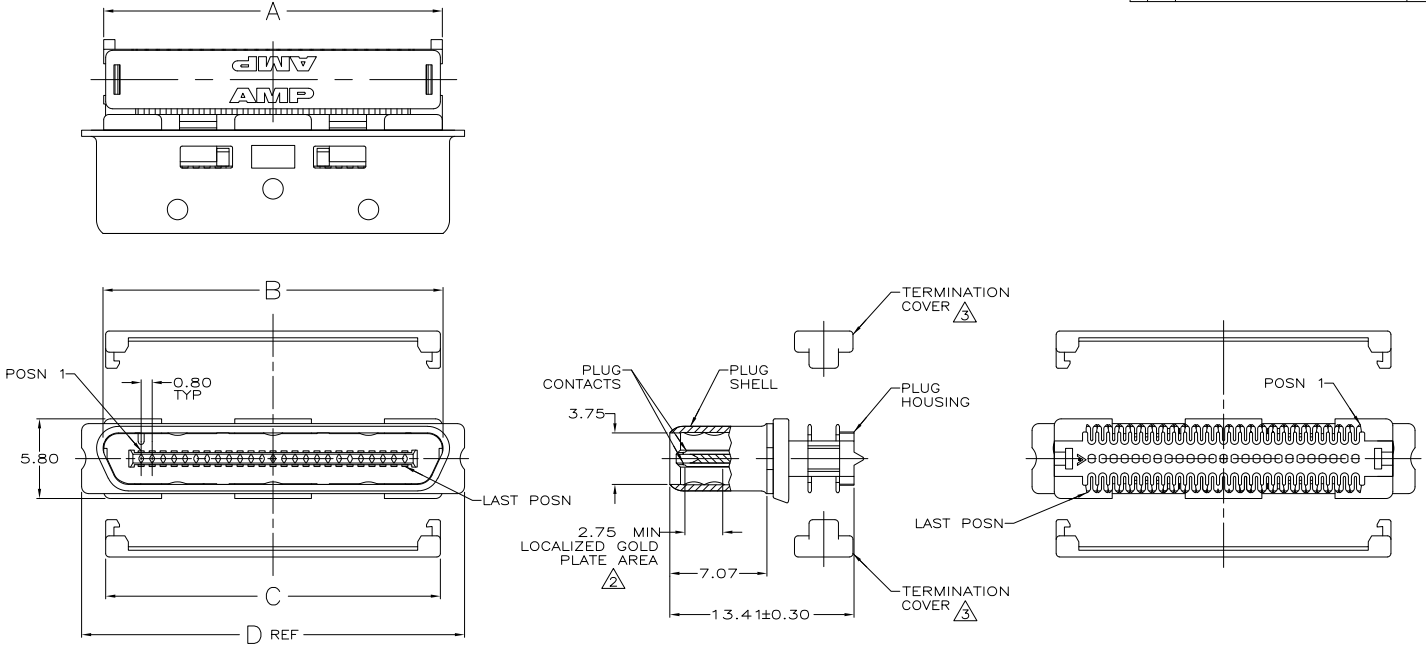
3

2

1

THIS DRAWING IS UNPUBLISHED. RELEASED FOR PUBLICATION. ALL RIGHTS RESERVED.

LOC	DIST	REVISIONS		DATE	MIN	APD
GP	00	F	LWR			
		P	REVISED PER ECO-11-004835	11MAR11	RK	HMR



- ⚠ MATERIAL:
 - PLUG CONTACTS - PHOSPHOR BRONZE.
 - PLUG SHELL - STEEL.
 - PLUG HOUSING - UL 94V-0 RATED LCP, COLOR: NATURAL.
 - TERMINATION COVERS - ABS/POLYCARBONATE ALLOY MOLDING COMPOUND, COLOR: BLACK.
- ⚠ TERMINATION COVERS ARE PACKAGED SEPARATELY.
- 3. RECOMMENDED WIRE: 30 AWG WITH A 0.56-0.64 INSULATION DIAMETER, WIRE MUST BE APPROVED BY AMP ENGINEERING.
- ⚠ FINISH:
 - PLUG CONTACTS - 0.76µm MINIMUM GOLD PLATE IN LOCALIZED GOLD PLATE AREA, 1.27µm MINIMUM BRIGHT TIN PLATE IN TERMINATION AREA, ALL OVER 1.27µm MINIMUM NICKEL.
 - PLUG SHELL - 5.08µm MINIMUM NICKEL OVER 1.27µm MINIMUM COPPER.

THIS DRAWING IS A CONTROLLED DOCUMENT.

DESIGNER: J. ALCORTA	DATE: 07-28-05	TE Connectivity
CHECKER: S. SHUEY	DATE: 07-28-05	
APPROVED: M. WALMSLEY	DATE: 07-28-05	
PRODUCT SPEC: 108-1471		
APPLICATION SPEC: -	SIZE: A2	CAGE CODE: 00779
WEIGHT: -	DRAWING NO: C=5787131	RESTRICTED TO: -
MATERIAL: -	CUSTOMER DRAWING	SCALE: 5:1
FINISH: -		SHEET: 1 of 1