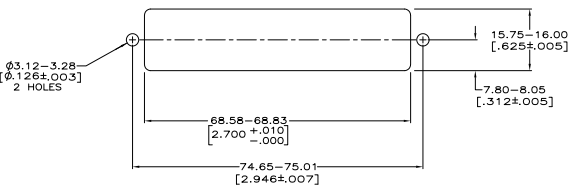


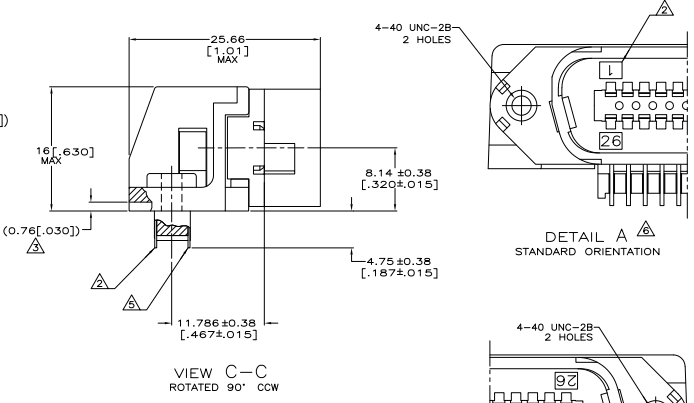
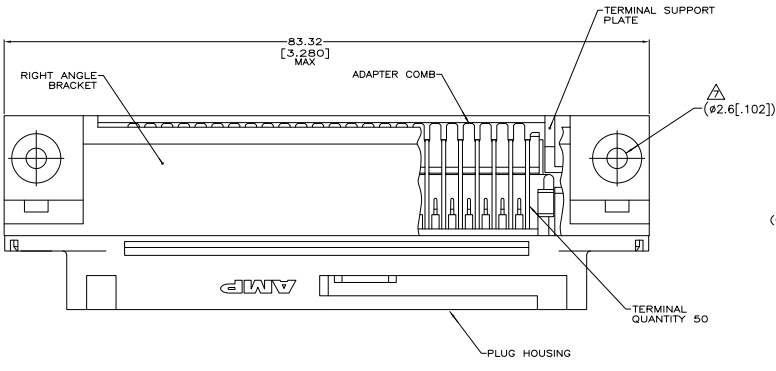
THIS DRAWING IS UNPUBLISHED  
 UNLESS INDICATED OTHERWISE  
 © 2008 BY TTI ELECTRONICS CORPORATION. ALL RIGHTS RESERVED.

REV	DATE	DESCRIPTION	BY	CHKD	APPD
GP 00					
B		REVISED FOR ECO-08-007327	DMPPROB	BM	WM



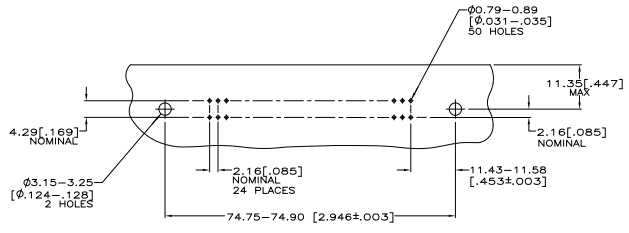
SUGGESTED REAR PANEL MOUNTING CUTOUT DIMENSIONS  
 SCALE 2:1

- ⚠ MATERIAL:  
 HOUSING, BRACKET, PLATE & COMB - THERMOPLASTIC, BLACK, 94V-0 RATED.  
 TERMINALS - HIGH STRENGTH COPPER ALLOY PLATED WITH EITHER 0.76µm [0.00030] MIN GOLD PLATE OR GOLD FLASH OVER PALLADIUM NICKEL PLATE, 0.76µm [0.00030] MIN TOTAL ON MATING SURFACE, 3.05µm [0.00120] MIN TIN PLATE ON TAILS. ALL OVER 1.27µm [0.00050] MIN NICKEL UNDERPLATE OVER ENTIRE TERMINAL.
- ⚠ TERMINAL 1 IS LOCATED IN THIS ROW FOR STANDARD ORIENTATION, 5552726-1 ONLY.
- ⚠ TERMINAL SUPPORT PLATE CLEARANCE FOR TERMINAL STRAIN RELIEF AND FLUX REMOVAL.
- ⚠ MAXIMUM PANEL THICKNESS: 1.57 [0.62].
- ⚠ TERMINAL 1 IS LOCATED IN THIS ROW FOR REVERSE ORIENTATION, 5552726-3 ONLY.
- ⚠ DETAILS "A" AND "B" ARE VIEWED FROM MATING SIDE OF RECEPTACLE ASSEMBLY.
- ⚠ FOR USE WITH A NO.4 BT TYPE SELF-TAPPING SCREW.



DETAIL A  
 STANDARD ORIENTATION

DETAIL B  
 REVERSE ORIENTATION



SUGGESTED PRINTED CIRCUIT BOARD MOUNTING DIMENSIONS  
 SCALE 2:1

SELF TAPPING	SEE DETAIL A	5552726-3
SELF TAPPING	SEE DETAIL B	5552726-1
TYPE OF MOUNTING	DESCRIPTION	PART NUMBER
SEE DETAIL A	PLUG ASSEMBLY, 50 POSITION, RIGHT ANGLE, SELF TAPPING, CHANGE	5552726

THIS DRAWING IS A CONTROLLED DOCUMENT. ANY UNAUTHORIZED REVISIONS ARE UNDESIRABLE.

DESIGNED BY	APPROVED BY	DATE	REVISED BY	DATE
DR	DM	08/08/08		
DATE	DATE	DRAWING NO.	REVISED TO	
08/08/08	08/08/08	5552726		
CUSTOMER DRAWING				

McMaster-Carr  
 TTI Electronics Corporation  
 Harrisburg, PA 17105-3808