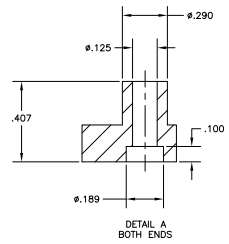
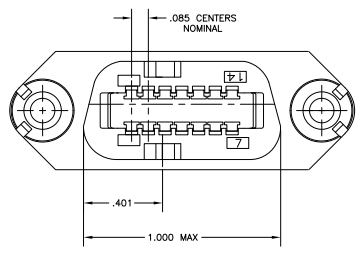
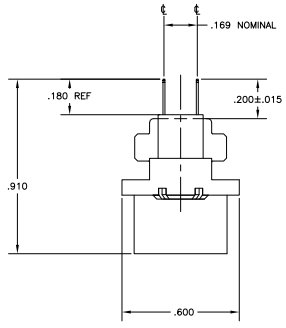
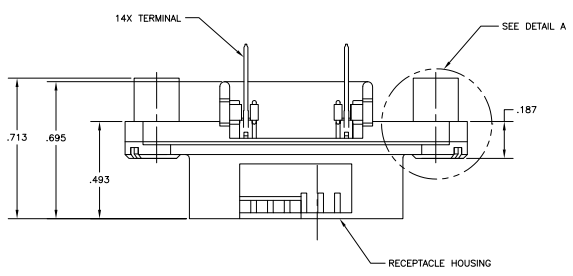
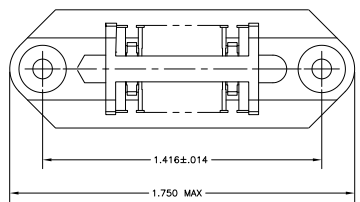


THIS DRAWING IS UNPUBLISHED. REPRODUCED FOR YOUR INFORMATION. ALL RIGHTS RESERVED.

REV	DATE	DESCRIPTION	BY	APP'D
GP 00				
B		REVISED FOR ECO-08-007327	23/AL/08	BM WM



1. THE CONTACT SURFACES OF THE TERMINALS ARE COATED WITH LUBRICANT.
- ⚠ ALL DIMENSIONS SHOWN ARE FOR REFERENCE ONLY UNLESS OTHERWISE SPECIFIED.
- ⚠ MATERIAL: HOUSING - THERMOPLASTIC, BLACK.
 TERMINAL - PHOS BRONZE PLATED WITH EITHER .000030 MINIMUM GOLD PLATE OR GOLD FLASH OVER PALLADIUM NICKEL PLATE, .000030 MINIMUM TOTAL ON MATING SURFACE. .000120 MINIMUM TIN PLATE ON TAILS OVER .000050 MINIMUM NICKEL UNDERPLATE OVER ENTIRE TERMINAL.

5552212-1
PART NUMBER

THIS DRAWING IS A CONTROLLED DOCUMENT.		DESIGNED BY	J. LATTUCA	DESIGNED		Tyco Electronics Corporation Harrisburg, PA 17105-3608	
DRAWN BY		DESIGNED BY	M. WILMSLEY	DESIGNED		RECEPTACLE ASSEMBLY 14- POS(TH) VERTICAL MOUNTING, W/ STANDOFFS CHAMP-LOCK	
CHECKED BY		DATE		DATE		SIZE	A1
APPROVED BY		DATE		DATE		DRAWING NO.	00779
CUSTOMER DRAWING		DATE		DATE		QTY	5552212