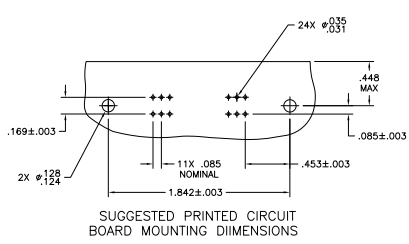
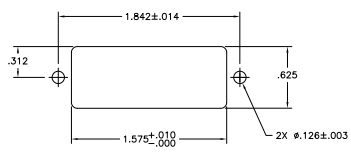


THIS DRAWING IS UNPUBLISHED  
 UNLESS INDICATED OTHERWISE  
 © 1988 BY TYS ELECTRONICS CORPORATION. ALL RIGHTS RESERVED.

REV	DATE	DESCRIPTION	BY	CHK	APP
GP 00					
D		REVISED FOR ECO-08-007327			

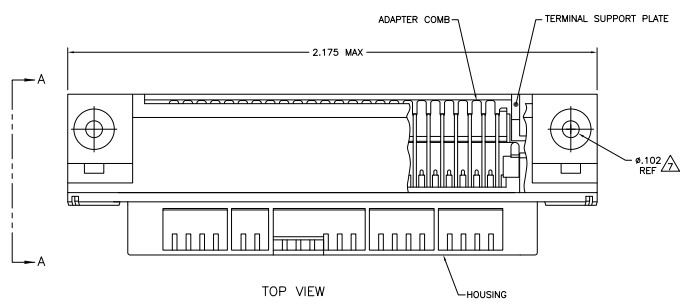


SUGGESTED PRINTED CIRCUIT BOARD MOUNTING DIMENSIONS

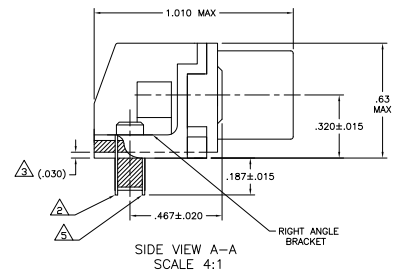


SUGGESTED PANEL CUTOUT FOR REAR PANEL MOUNTING

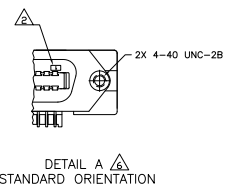
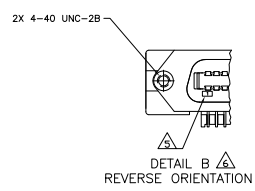
- △ MATERIAL:  
 HOUSING, BRACKET, ADAPTER COMB & PLATE - THERMOPLASTIC, BLACK, 94V-0 RATED  
 TERMINALS - HIGH STRENGTH COPPER ALLOY PLATED WITH EITHER .00030 MIN GOLD PLATE OR GOLD FLASH OVER PALLADIUM NICKEL PLATE, .00030 MIN TOTAL ON MATING SURFACE, .000120 MIN TIN PLATE ON TAILS. ALL OVER .000050 MIN NICKEL UNDERPLATE OVER ENTIRE TERMINAL.
- △ TERMINAL 1 IS LOCATED IN THIS ROW FOR 5552740-1.
- △ TERMINAL SUPPORT PLATE CLEARANCE FOR TERMINAL STRAIN RELIEF AND FLUX REMOVAL.
- △ PANEL THICKNESS RANGE: .062 MAX.
- △ TERMINAL 1 IS LOCATED IN THIS ROW FOR 5552740-2.
- △ DETAILS A & B ARE VIEWED FROM MATING SIDE OF RECEPTACLE ASSEMBLY.
- △ FOR USE WITH A NO. 4 BT TYPE SELF TAPPING SCREW.



TOP VIEW



SIDE VIEW A-A SCALE 4:1



OBSOLETE	SELF-TAPPING △	SEE DETAIL B △	5552740-2
	SELF-TAPPING △	SEE DETAIL A △	5552740-1
	TYPE OF MOUNTING	DESCRIPTION	PART NUMBER

THIS DRAWING IS A CONTROLLED DOCUMENT.		BY	MCMASTER	TRACED	DATE	BY	Typical	DATE	TYS Electronics Corporation
DESIGNER	APPROVED	DATE	DATE	DATE	DATE	DATE	DATE	DATE	Harrisburg, PA 17105-3608
REVISIONS	DESCRIPTION	DATE	BY	CHK	APP	DATE	BY	CHK	APP
1	RECEPTACLE ASSEMBLY, 24 POSN, RIGHT ANGLE, PRINTED CIRCUIT BOARD (CHAMP-LOW, THRU-BOLT & SELF-TAPPING)								
DATE	DATE	DATE	DATE	DATE	DATE	DATE	DATE	DATE	DATE
100779	5552740								
CUSTOMER DRAWING									