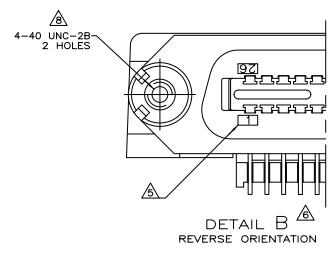
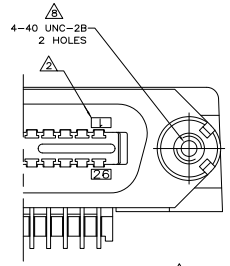
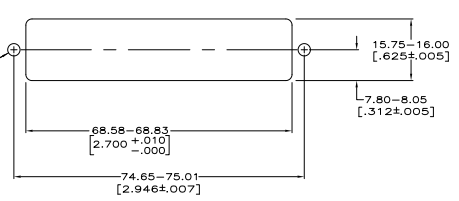
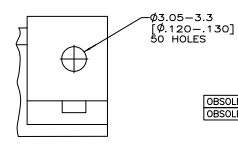
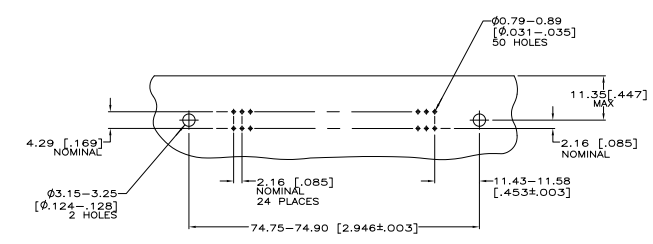
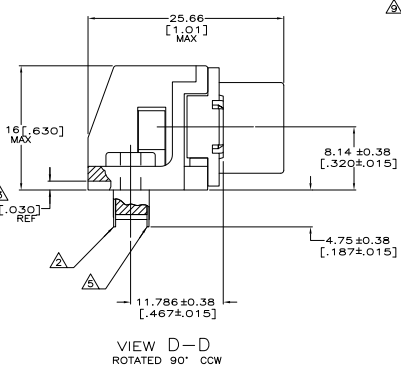
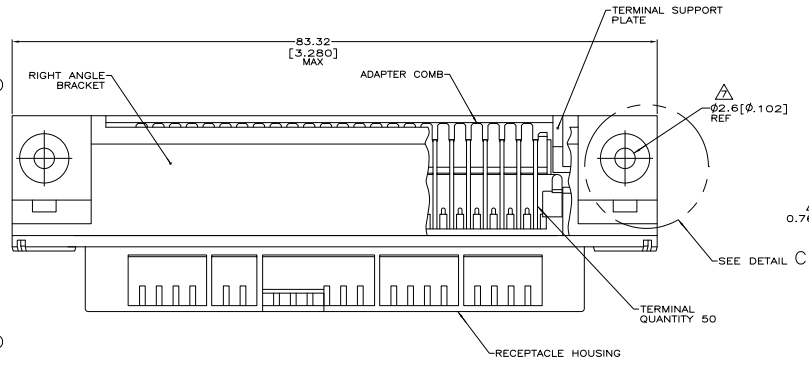


REV	DATE	DESCRIPTION	BY	CHK	APP
GP 00					
E1		REVISED PER EDD-11-005033	23MAY11	RK	HMR



- △ MATERIAL: HOUSING, BRACKET, PLATE & COMB - THERMOPLASTIC, BLACK, 94V-0 RATED.
- △ TERMINALS- HIGH STRENGTH COPPER ALLOY PLATED WITH EITHER 0.76µm [.000030] MIN GOLD PLATE OR GOLD FLASH OVER PALLADIUM NICKEL PLATE, 0.76µm [.000030] MIN TOTAL ON MATING SURFACE, 3.05µm [.000120] MIN TIN ON TAILS. ALL OVER 1.27µm [.000050] MIN NICKEL UNDERPLATE OVER ENTIRE TERMINAL.
- △ THREADED INSERT- #4-40 UNC, BRIGHT ZINC PLATED BRASS.
- △ TERMINAL 1 IS LOCATED IN THIS ROW FOR STANDARD ORIENTATION, 5552725-1, -2, -5 & -7.
- △ TERMINAL SUPPORT PLATE CLEARANCE FOR TERMINAL STRAIN RELIEF AND FLUX REMOVAL.
- △ MAXIMUM PANEL THICKNESS: 1.57[.062].
- △ TERMINAL 1 IS LOCATED IN THIS ROW FOR REVERSE ORIENTATION, 5552725-3 AND -6 ONLY.
- △ DETAILS "A" AND "B" ARE VIEWED FROM MATING SIDE OF RECEPTACLE ASSEMBLY.
- △ FOR USE WITH A NO.4 BT TYPE SELF-TAPPING SCREW.
- △ 5552725-1, -2 AND -3 ARE TAPPED 4-40; -5, -6 & -7 USE 4-40 THREADED INSERTS.
- △ INSERT SHALL WITHSTAND 8 INCH-POUNDS OF TORQUE WITHOUT CRACKING HOUSING OR LOOSENING.



SYMBOL	DESCRIPTION	REFERENCE	PART NUMBER
△	THREADED INSERT	THRU-BOLT(SEE DETAIL C)	SEE DETAIL A △ 5552725-7
△	THREADED INSERT	SELF-TAPPING	SEE DETAIL B △ 5552725-6
△	THREADED INSERT	SELF-TAPPING	SEE DETAIL A △ 5552725-5
△	TAPPED HOLE	SELF-TAPPING	SEE DETAIL B △ 5552725-3
△	TAPPED HOLE	THRU-BOLT(SEE DETAIL C)	SEE DETAIL A △ 5552725-2
△	TAPPED HOLE	SELF-TAPPING	SEE DETAIL A △ 5552725-1
△	THREAD TYPE	TYPE OF MOUNTING	DESCRIPTION PART NUMBER

THIS DRAWING IS A CONTROLLED DOCUMENT.		REV. DISPOSITION		TE Connectivity	
INCHES	MILLIMETERS	REV. BY	DATE	REV. BY	DATE
1/16	1.5				
1/8	3.175				
3/16	4.75				
1/4	6.35				
5/16	7.9375				
3/8	9.525				
7/16	11.1125				
1/2	12.7				
5/8	15.875				
3/4	19.05				
7/8	22.225				
1	25.4				
1 1/8	31.75				
1 1/4	38.1				
1 3/8	44.45				
1 1/2	50.8				
1 5/8	57.15				
1 3/4	63.5				
1 7/8	69.85				
2	76.2				
2 1/8	82.55				
2 1/4	88.9				
2 3/8	95.25				
2 1/2	101.6				
2 5/8	107.95				
2 3/4	114.3				
2 7/8	120.65				
3	127				
3 1/8	133.35				
3 1/4	139.7				
3 3/8	146.05				
3 1/2	152.4				
3 5/8	158.75				
3 3/4	165.1				
3 7/8	171.45				
4	177.8				
4 1/8	184.15				
4 1/4	190.5				
4 3/8	196.85				
4 1/2	203.2				
4 5/8	209.55				
4 3/4	215.9				
4 7/8	222.25				
5	228.6				
5 1/8	234.95				
5 1/4	241.3				
5 3/8	247.65				
5 1/2	254				
5 5/8	260.35				
5 3/4	266.7				
5 7/8	273.05				
6	279.4				
6 1/8	285.75				
6 1/4	292.1				
6 3/8	298.45				
6 1/2	304.8				
6 5/8	311.15				
6 3/4	317.5				
6 7/8	323.85				
7	330.2				
7 1/8	336.55				
7 1/4	342.9				
7 3/8	349.25				
7 1/2	355.6				
7 5/8	361.95				
7 3/4	368.3				
7 7/8	374.65				
8	381				
8 1/8	387.35				
8 1/4	393.7				
8 3/8	400.05				
8 1/2	406.4				
8 5/8	412.75				
8 3/4	419.1				
8 7/8	425.45				
9	431.8				
9 1/8	438.15				
9 1/4	444.5				
9 3/8	450.85				
9 1/2	457.2				
9 5/8	463.55				
9 3/4	469.9				
9 7/8	476.25				
10	482.6				
10 1/8	488.95				
10 1/4	495.3				
10 3/8	501.65				
10 1/2	508				
10 5/8	514.35				
10 3/4	520.7				
10 7/8	527.05				
11	533.4				
11 1/8	539.75				
11 1/4	546.1				
11 3/8	552.45				
11 1/2	558.8				
11 5/8	565.15				
11 3/4	571.5				
11 7/8	577.85				
12	584.2				
12 1/8	590.55				
12 1/4	596.9				
12 3/8	603.25				
12 1/2	609.6				
12 5/8	615.95				
12 3/4	622.3				
12 7/8	628.65				
13	635				
13 1/8	641.35				
13 1/4	647.7				
13 3/8	654.05				
13 1/2	660.4				
13 5/8	666.75				
13 3/4	673.1				
13 7/8	679.45				
14	685.8				
14 1/8	692.15				
14 1/4	698.5				
14 3/8	704.85				
14 1/2	711.2				
14 5/8	717.55				
14 3/4	723.9				
14 7/8	730.25				
15	736.6				
15 1/8	742.95				
15 1/4	749.3				
15 3/8	755.65				
15 1/2	762				
15 5/8	768.35				
15 3/4	774.7				
15 7/8	781.05				
16	787.4				
16 1/8	793.75				
16 1/4	800.1				
16 3/8	806.45				
16 1/2	812.8				
16 5/8	819.15				
16 3/4	825.5				
16 7/8	831.85				
17	838.2				
17 1/8	844.55				
17 1/4	850.9				
17 3/8	857.25				
17 1/2	863.6				
17 5/8	869.95				
17 3/4	876.3				
17 7/8	882.65				
18	889				
18 1/8	895.35				
18 1/4	901.7				
18 3/8	908.05				
18 1/2	914.4				
18 5/8	920.75				
18 3/4	927.1				
18 7/8	933.45				
19	939.8				
19 1/8	946.15				
19 1/4	952.5				
19 3/8	958.85				
19 1/2	965.2				
19 5/8	971.55				
19 3/4	977.9				
19 7/8	984.25				
20	990.6				