

4

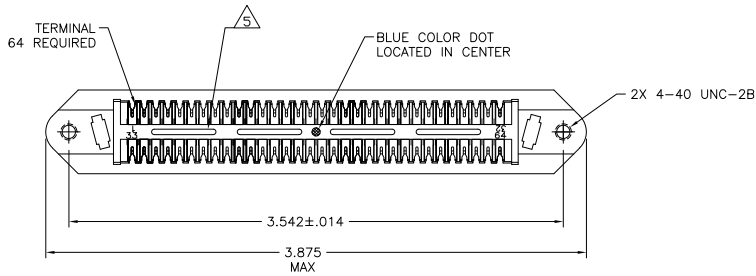
3

2

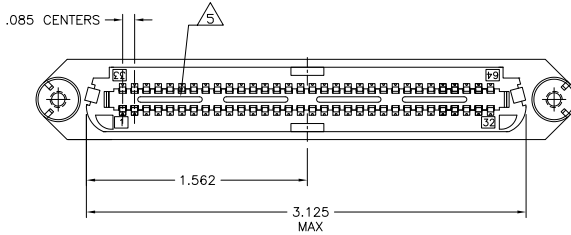
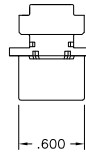
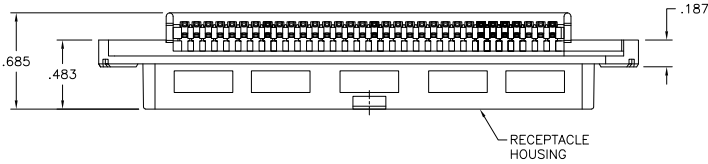
1

THIS DRAWING IS UNPUBLISHED. RELEASED FOR PUBLICATION
 © COPYRIGHT BY TYCO ELECTRONICS CORPORATION. ALL RIGHTS RESERVED.

LOC	DIST	REVISIONS					
GP	00	P	LTR	DESCRIPTION	DATE	BY	APP'D
		K		REVISED PER ECO-08-007327	14OCT08	BM	WM



1. THE CONTACT SURFACES OF THE TERMINALS ARE COATED WITH LUBRICANT.
 2. ALL DIMENSIONS SHOWN ARE FOR REFERENCE ONLY UNLESS OTHERWISE SPECIFIED.
- △ MATERIAL:
 HOUSING - THERMOPLASTIC (BLACK)
 TERMINALS - HIGH STRENGTH COPPER ALLOY PLATED WITH .000030 MIN GOLD OR GOLD FLASH OVER PALLADIUM NICKEL PLATE .000030 MIN TOTAL ON MATING SURFACE. .000050 MIN NICKEL UNDERPLATE OVER ENTIRE TERMINAL.
4. WIRE SIZE: 24 & 26 AWG SOLID & 24 AWG 7 STRANDS OF COPPER CONDUCTORS. MAX INSULATION DIAMETER OF .045 IS ACCEPTABLE FOR MOST APPLICATIONS.
- △ CORING MAY OR MAY NOT APPEAR AND IS AT THE DISCRETION OF TYCO ELECTRONICS.



552315-1
 PART NUMBER

THIS DRAWING IS A CONTROLLED DOCUMENT.		DR. S. MCMASTER 05OCT05	Tyco Electronics Corporation Harrisburg, PA 17105-3608	
DIMENSIONS:		CR. W. MILLIMETERS 05OCT05	NAME	
INCHES		DR. W. MILLIMETERS	ASSEMBLY, RECEPTACLE	
OTHER DIMENSIONS:		APPC. W. MILLIMETERS	64 POSITION, B SLOT	
0 PLC		PRODUCT SPEC	CHAMP-LOK W/ 4-40 HOLES	
1 PLC		APPLICATION SPEC	SIZE	CAGE CODE
2 PLC		WEIGHT	A2	00779
3 PLC		FINISH	C-552315	
4 PLC		ANGLES	RESTRICTED TO	
MATERIAL		CUSTOMER DRAWING		SCALE
△ 3		CUSTOMER DRAWING		NTS
FINISH		SHEET		1 of 1
△ 3		REV		K

552315

A