

4

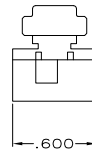
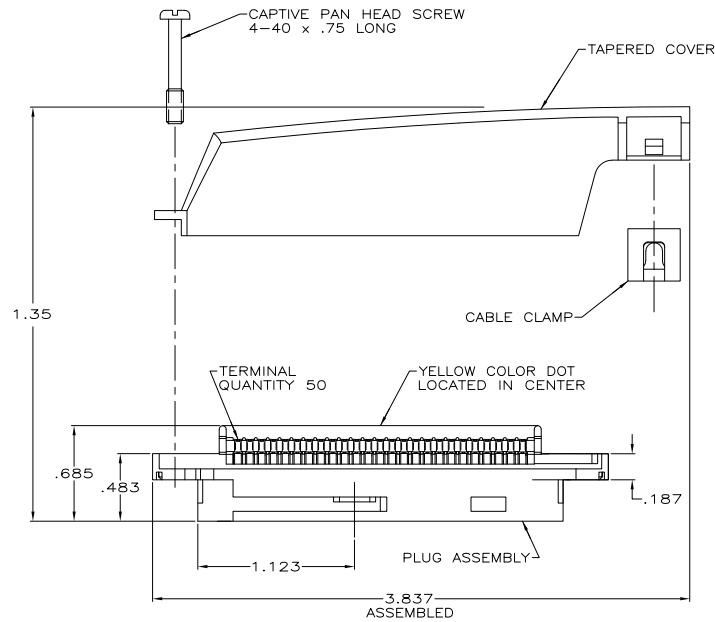
3

2

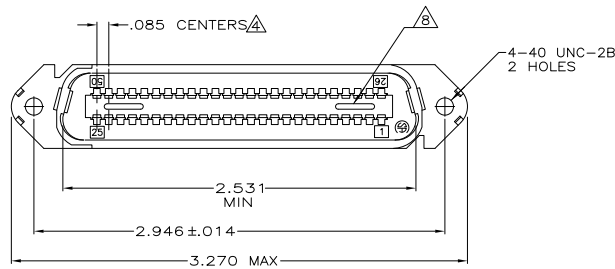
1

THIS DRAWING IS UNPUBLISHED. RELEASED FOR PUBLICATION
 © COPYRIGHT BY TYCO ELECTRONICS CORPORATION. ALL RIGHTS RESERVED.

LOC	DIST	REVISIONS			
P	LTR	DESCRIPTION	DATE	BY	APPD
B		REVISED PER ECO-08-007327	02OCT08	BM	WM



- △ MATERIAL:
HOUSING, COVERS AND CABLE CLAMP - THERMOPLASTIC, BLACK.
TERMINALS - HIGH STRENGTH COPPER ALLOY PLATED WITH .000030 MIN GOLD, OR, GOLD FLASH OVER PALLADIUM NICKEL PLATE, .000030 MIN TOTAL ON MATING SURFACE. .000050 MIN NICKEL UNDERPLATE OVER ENTIRE TERMINAL.
- 2. THE CONTACT SURFACES OF THE TERMINALS ARE COATED WITH LUBRICANT.
- △ ALL DIMENSIONS ARE SHOWN FOR REFERENCE ONLY UNLESS OTHERWISE SPECIFIED.
- △ CENTER-TO-CENTER SPACING OF TERMINALS IS .085.
- 5. WIRE SIZE: 26-27-28 AWG 7 STRANDS OF COPPER CONDUCTORS. MAXIMUM INSULATION OF .045 IS ACCEPTABLE FOR MOST APPLICATIONS.
- 6. COVER AND HARDWARE SHIPPED UNASSEMBLED.
- 7. KIT SHIPPED IN POLY BAG FORM.
- △ CORING MAY OR MAY NOT APPEAR AND IS AT THE DISCRETION OF TYCO ENGINEERING.



BLACK	5552402-1
DESCRIPTION	PART NUMBER

THIS DRAWING IS A CONTROLLED DOCUMENT.		DR: C. PETERS 23SEP05	Tyco Electronics Corporation Harrisburg, PA 17105-3608	
DIMENSIONS: INCHES		CHK: S. BOLASH 23SEP05	PLUG KIT, 50 POSITION, E-SLOT, SCREW LOCK, TAPERED COVER, CHAMP-LOK	
OTHER FINISHES UNLESS OTHERWISE SPECIFIED:		APPD: M. WALMSLEY 23SEP05	RESTRICTED TO	
0 PLG	# -	PRODUCT SPEC	SIZE	CAGE CODE
1 PLG	# -	APPLICATION SPEC	A2	00779
2 PLG	# -	WEIGHT	C	5552402
3 PLG	# -	FINISH	SCALE	2:1
4 PLG	# -	MATERIAL	SHEET	1 of 1
5 PLG	# -	CUSTOMER DRAWING	REV	B

AMP 1471-9 REV 31MM2000

5552402

A