

4

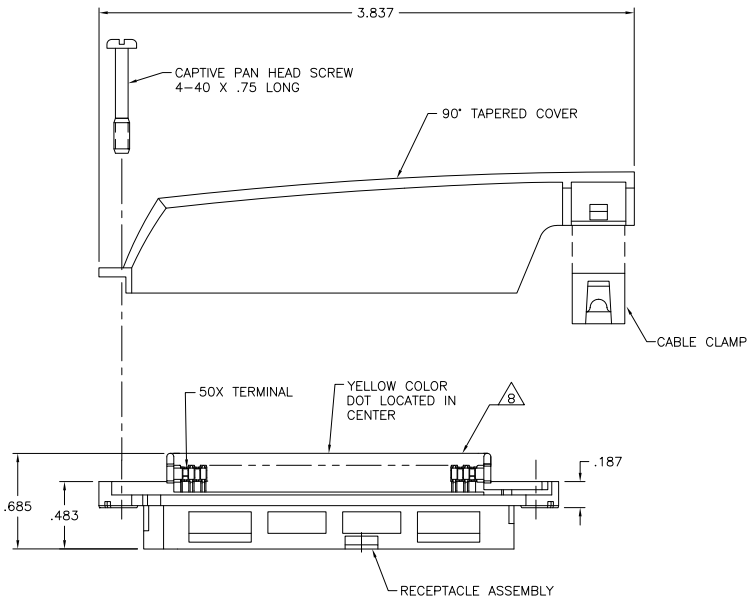
3

2

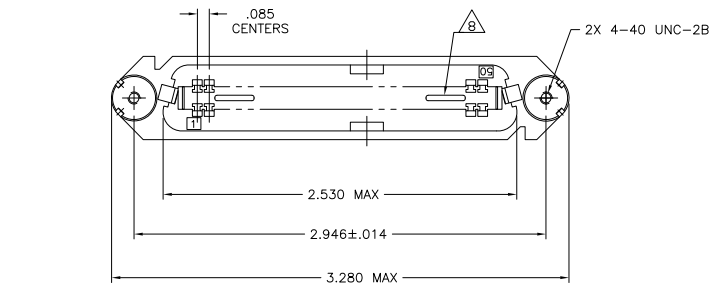
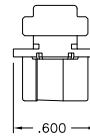
1

THIS DRAWING IS UNPUBLISHED. RELEASED FOR PUBLICATION
 © COPYRIGHT BY TYCO ELECTRONICS CORPORATION. ALL RIGHTS RESERVED.

LOC	DIST	REVISIONS		
P	LTR	DESCRIPTION	DATE	BY
GP	00			
B		REVISED PER ECO-08-007327	02OCT08	BM WM



1. THE CONTACT SURFACES OF THE TERMINALS ARE COATED WITH LUBRICANT.
2. ALL DIMENSIONS ARE SHOWN FOR REFERENCE ONLY UNLESS OTHERWISE SPECIFIED.
3. MATERIAL:
HOUSING, COVERS AND CABLE CLAMP - THERMOPLASTIC, BLACK.
TERMINALS - PHOS BRONZE.
HARDWARE - STEEL.
4. FINISH:
TERMINALS - PLATED WITH .000030 MIN GOLD, OR GOLD FLASH OVER PALLADIUM NICKEL PLATE, .000030 MIN TOTAL ON MATING SURFACE. .000050 MIN NICKEL UNDERPLATE OVER ENTIRE TERMINAL.
HARDWARE - ZINC PLATED.
5. COVER AND HARDWARE SHIPPED UNASSEMBLED.
6. WIRE SIZE: 26-27-28 AWG 7 STRANDS OF COPPER CONDUCTORS. MAXIMUM INSULATION DIAMETER OF .045 IS ACCEPTABLE FOR MOST APPLICATIONS.
KIT SHIPPED IN POLY BAG FORM.
7. CORING MAY OR MAY NOT APPEAR AND IS AT THE DISCRETION OF TYCO ENGINEERING.



.350	BLACK	5552403-1
.425	COLOR	PART NUMBER

THIS DRAWING IS A CONTROLLED DOCUMENT.		DR. S. MCMASTER	30SEP08	Tyco Electronics Corporation	
DIMENSIONS:		CHK. W. MILLHIMES	30SEP08	Harrisburg, PA 17105-3608	
INCHES		APP. W. MILLHIMES	30SEP08	NAME	
OTHER DIMENSIONS:		PRODUCT SPEC		RECEPTACLE KIT, 50 POSITION, E-SLOT, SCREW LOCK, CABLE TO CABLE CHAMP-LOK	
MATERIAL		APPLICATION SPEC		SIZE	CAGE CODE
FINISH		WEIGHT		A2	00779
		RESTRICTED TO		C	5552403
		CUSTOMER DRAWING		SCALE	2:1
				SHEET	1 of 1
				REV	B

AMP 1471-9 REV 31MM2000

5552403

B

A