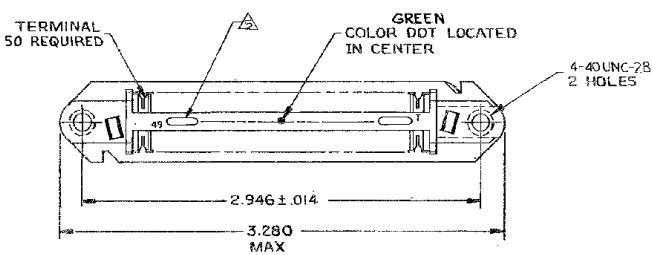
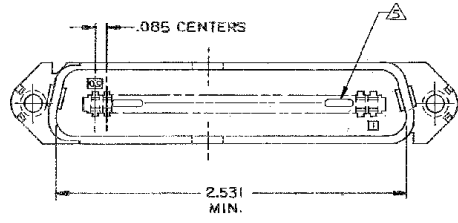
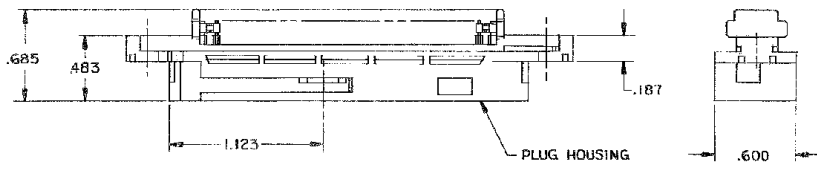


THIS DRAWING IS UNPUBLISHED. RELEASED FOR PRODUCTION.  
 BY TYCO ELECTRONICS CORPORATION. ALL RIGHTS RESERVED.

REV	DATE	DESCRIPTION	DATE	BY	APP'D
R		REVISED PER ECO-08-007327	26JAN2009	ZMR	WLM



1. THE CONTACT SURFACES OF THE TERMINALS ARE COATED WITH LUBRICANT.
  2. ALL DIMENSIONS SHOWN ARE FOR REFERENCE ONLY UNLESS OTHERWISE SPECIFIED.
  3. MATERIAL:  
 HOUSING - THERMOPLASTIC (BLACK)  
 TERMINALS - HIGH STRENGTH COPPER ALLOY PLATED WITH EITHER .000030 MIN GOLD OR GOLD FLASH OVER PALLADIUM NICKEL .000030 MIN TOTAL ON CONTACT MATING SURFACE. .000050 MIN NICKEL UNDERPLATE OVER ENTIRE TERMINAL.
  4. WIRE SIZE: 22 AWG SOLID OR 22 AWG 7 STRANDS OF COPPER CONDUCTORS. MAX INSULATION DIAMETER OF .045 IS ACCEPTABLE FOR MOST APPLICATIONS.
- NOTE: CORING MAY OR MAY NOT APPEAR AND IS AT THE DISCRETION OF TYCO ELECTRONICS.



BLACK	552173-1
DESCRIPTION	PART NO

THIS DRAWING IS A CONTROLLED DOCUMENT.		DWG: RICHARD W. SPEER 1-10-80		Tyco Electronics Corporation	
CHK: V.E. SLACK 1-11-80		APP'D: B.G. WARD 1-11-80		Harrisburg, PA 17105-3608	
DIMENSIONS IN INCHES		TOLERANCES UNLESS OTHERWISE SPECIFIED:		Tyco Electronics	
Ø	FIL	#	△	PLUG ASSY, 50 POSITIONS, C SLOT	
1	FIL	#	△	W/ 4-40 HOLES, CHAMP-LOK	
2	FIL	#	△	SIZE: A2	
3	FIL	#	△	DWG CODE: 00779	
4	FIL	#	△	DRAWING NO: 552173	
ANGLES	#	△	△	RESTRICTED TO:	
FINISH	#	△	△	CUSTOMER DRAWING	
MATERIAL		WEIGHT		SCALE: NTS	
MATERIAL		WEIGHT		SHEET: 1 of 1	
MATERIAL		WEIGHT		REV: R	

AMP 1471-B REV 31MFP000

552173