

4

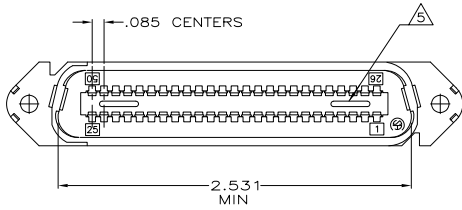
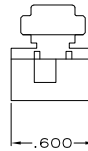
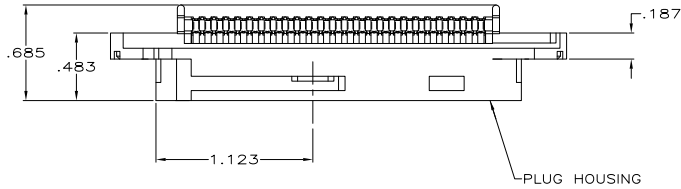
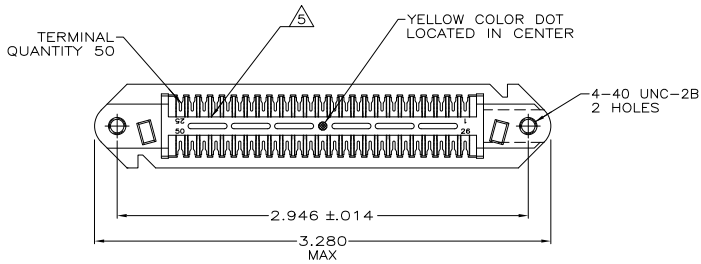
3

2

1

THIS DRAWING IS UNPUBLISHED. RELEASED FOR PUBLICATION. BY TYCO ELECTRONICS CORPORATION. ALL RIGHTS RESERVED.

LOC	DIST	REVISIONS		
GP	00	F	LNK	DATE
		W	REVISED PER ECO-08-007327	02OCT08
				BM WM



- △ MATERIAL:  
HOUSING - POLYPHENYLENE OXIDE  
TERMINALS - HIGH STRENGTH COPPER ALLOY PLATED WITH .000030 MIN GOLD OR GOLD FLASH OVER PALLADIUM NICKEL PLATE. .000030 MIN TOTAL ON MATING SURFACE. .000050 MIN NICKEL UNDERPLATE OVER ENTIRE TERMINAL.
- 2. THE CONTACT SURFACES OF THE TERMINALS ARE COATED WITH LUBRICANT.
- △ ALL DIMENSIONS SHOWN ARE FOR REFERENCE ONLY UNLESS OTHERWISE SPECIFIED.
- 4. WIRE SIZE: 26, 27 & 28 AWG 7 STRANDS OF COPPER CONDUCTORS. MAX INSULATION Ø1.14 [.045] IS ACCEPTABLE FOR MOST APPLICATIONS.
- △ CORING MAY OR MAY NOT APPEAR AND IS AT THE DISCRETION OF TYCO ELECTRONICS.

OBSOLETE	GRAY	552390-4
	BLACK	552390-1
	COLOR	PART NUMBER

THIS DRAWING IS A CONTROLLED DOCUMENT.		DR R. SALLEY 10-JAN-80	Tyco Electronics Corporation Harrisburg, PA 17105-3608	
DIMENSIONS: mm [INCHES]		CHK V. SLACK 11-JAN-80	NAME	
TOLERANCES UNLESS OTHERWISE SPECIFIED:		APPC G. WARD 11-JAN-80	PLUG ASSEMBLY, 50 POSITION E-SLOT, W/ 4-40 HOLES CHAMP-LOK	
0 PLG	± .005	APPLICATION SPEC:	SIZE	RESTRICTED TO
1 PLG	± .005	WEIGHT	A2	
2 PLG	± .005		00779	
3 PLG	± .005		C=552390	
4 PLG	± .005			
ANGLES	± .005			
MATERIAL	△	CUSTOMER DRAWING	SCALE	2:1
FINISH	△		SHEET	1 of 1
			REV	W

AMP 1471-9 REV 31MM2000

552390

A