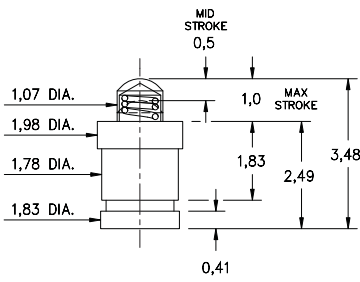


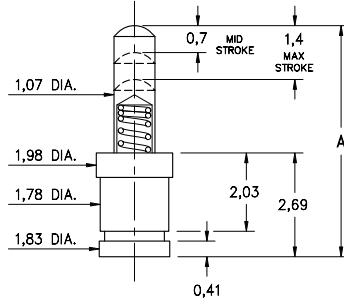
0910-0

0910-1⇒4



0910-0-57-20-76-14-11-0

Short Stroke, Surface mount
Packaged on 16mm wide carrier
tape: 1,500 parts per 330 reel.



0910-X-57-20-75-14-11-0

Standard Stroke, Surface mount
Packaged on carrier tape.
See chart for tape width and qty. per reel

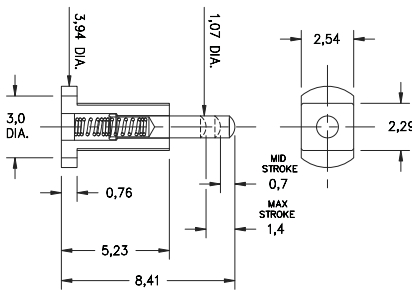


Basic Part Number	Length A
0910-1	4,5
0910-2	5,0
0910-3	5,51
0910-4	5,99

Basic Part Number	Tape Width	Quantity per Reel
0910-1	16mm	1,500
0910-2	24mm	1,100
0910-3	24mm	1,100
0910-4	24mm	1,100

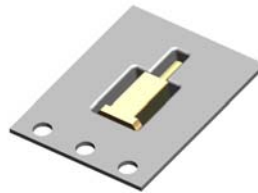
0967

0990-0

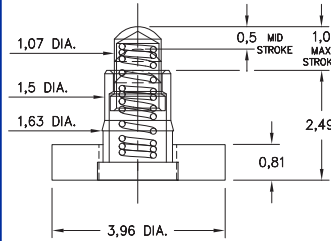
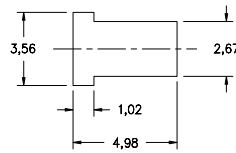


0967-0-15-20-75-14-11-0

Standard Stroke, Horizontal Surface mount
Also available on 16mm wide carrier
tape: 2,200 parts per 330 reel.
Order as: 0967-0-58-20-75-14-11-0



P.C.B. Layout

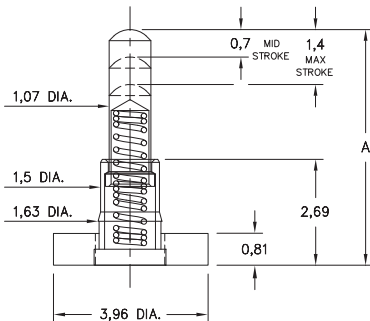


0990-0-50-20-76-14-11-0

Short Stroke, Surface mount
Large Base

0990-1⇒4

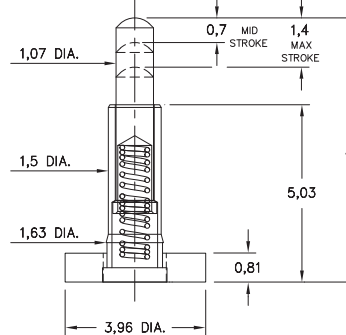
0997-0⇒9



Basic Part Number	Length A
0990-1	4,5
0990-2	5,0
0990-3	5,51
0990-4	5,99

0990-X-50-20-75-14-11-0

Standard Stroke, Surface mount
Large Base



Basic Part Number	Length A
0997-0	6,48
0997-1	6,99
0997-2	7,49
0997-3	8,0
0997-4	8,51
0997-5	8,89
0997-6	9,4
0997-7	9,91
0997-8	10,41
0997-9	10,92

0997-X-50-20-75-14-11-0

Standard Stroke, Surface mount
Large Base

ORDER CODE: 09XX - X - XX - 20 - 7X - 14 - 11 - 0

Spring Number ↗

MATERIAL SPECIFICATIONS:

- SLEEVE & PLUNGER MATERIAL:** Copper Alloy
- SPRING MATERIAL:** Beryllium Copper
- SLEEVE & PLUNGER FINISH:** 0,51 µm Gold over Nickel
- SPRING FINISH:** 0,25 µm Gold over Nickel
- DIMENSION IN INCHES:**
- TOLERANCES ON:** LENGTHS: ±0,15
DIAMETERS: ±0,05
ANGLES: ± 2°



MECHANICAL & ELECTRICAL SPECIFICATIONS:

- DURABILITY:** 1,000,000 cycles
- CURRENT RATING:** 2A continuous, 3A peak
- CONTACT RESISTANCE:** 20 mΩ max.

SPRING NUMBER	Mid. STROKE	Max. STROKE	FORCE @ Mid. Stroke	Initial Force (Pre-load)
75	0,7	1,4	60 g	25 g
76	0,5	0,99	60 g	25 g

75 & 76 Springs are not Interchangeable