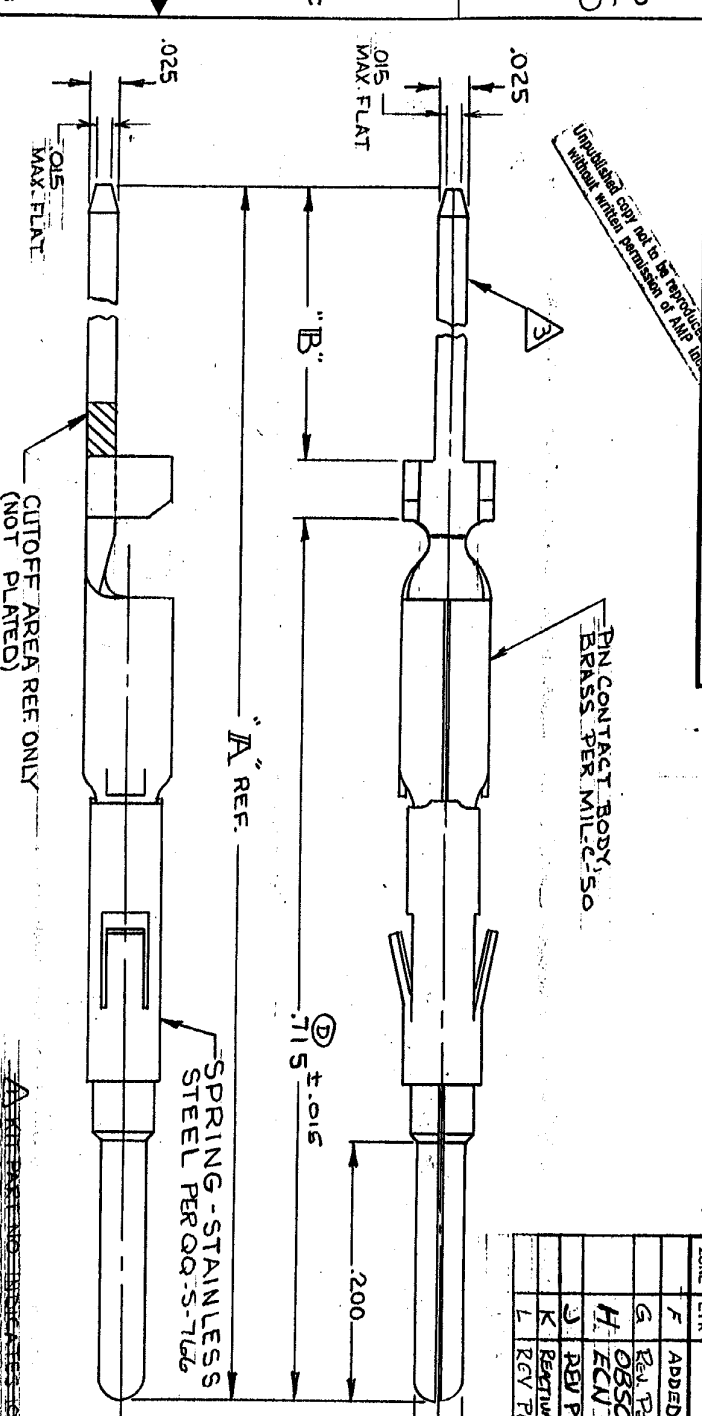


DRAWING MADE IN AMERICAN PROJECTION
 © 1970 BY AMP INCORPORATED. ALL RIGHTS RESERVED. AMP PRODUCTS COVERED BY PATENTS AND/OR PATENTS PENDING.



REVISIONS		
ZONE	DESCRIPTION	DATE
F	ADDED PER ECN E-663	9-28-70
G	REV PER ECN J-260	7/5/82
H	OBSOLETE - 841-0 PER ECN R-2733	3-2-87
J	REV PER DF-2362 JW	11-2-88
K	REWORK - 841-0 DF-4925	2-14-92
L	REV PER DF-5580	7-8-92

PART NO.	"A"	"B"	CONTACT FINISH	NO. OF TERMINATION	CONTACT PART NO.
205171-2	1.450	.685	0.00030 MIN. GOLD / 0.00050 MIN. NI	3 *	204321-2
1-205171-1	1.236	.471	0.00030 MIN. GOLD / 0.00050 MIN. NI	2 *	204321-1
1-205171-0	1.022	.257	0.00030 MIN. GOLD / 0.00050 MIN. NI	1 *	204321-0
205171-9	1.450	.685	SELECTIVE .000030 GOLD / .000030 NICKEL	3 *	204321-9
205171-8	1.236	.471	SELECTIVE .000030 GOLD / .000030 NICKEL	2 *	204321-8
205171-7	1.022	.257	SELECTIVE .000030 GOLD / .000030 NICKEL	1 *	204321-7
205171-6	1.450	.685	TIN NICKEL PLATED	3 *	204321-6
205171-5	1.236	.471	TIN NICKEL PLATED	2 *	204321-5
205171-4	1.022	.257	TIN NICKEL PLATED	1 *	204321-4
205171-3	1.450	.655	TIN	3	204321-3
205171-2	1.236	.471	TIN	2	204321-2
205171-1	1.022	.257	TIN	1	204321-1

DR	DATE	DESCRIPTION	SCALE
DF	10-14-70	DESIGN	10:1
DF	10-14-70	DESIGN	10:1
DF	10-20-70	DESIGN	10:1
DF	10-20-70	DESIGN	10:1

AMP 1470-1 REV (7/68) 4 3 2 1

UNPUBLISHED COPY MAY BE REPRODUCED WITHOUT WRITTEN PERMISSION OF AMP

* DENOTES RELEASED ITEMS.

1. AT LEAST TWO SHARP CORNERS WHOSE RADIUS SHALL NOT EXCEED .003.

2. GOLD FLASH OVER .00030 MIN. NICKEL ON ENTIRE CONTACT, WITH .00030 MIN. GOLD ON ELECTRICAL ENGAGEMENT AREA ONLY.

3. OBSOLETE PART NO.

4. CAUTION: USE OF TYPED TERMINALS IN CERTAIN ENVIRONMENTS MAY CAUSE NON-CONFORMANCE TO AMP PRODUCT SPECIFICATION 108-1005.

AMP INCORPORATED
 HARRISBURG, PENNSYLVANIA

PIN CONTACT, TYPE XI, # 20,
 WRAP TYPE, LOOSE PIECE,
 .025 X .025, KIT

00779 2051711

CUSTOMER DRAWING