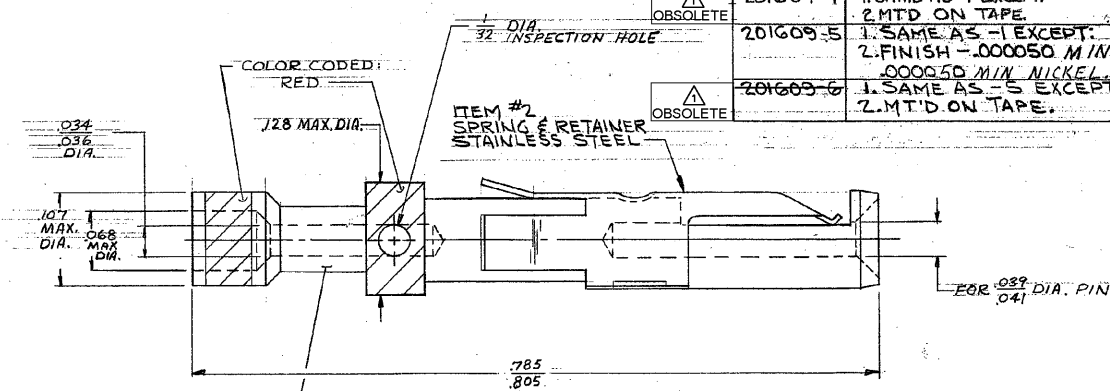


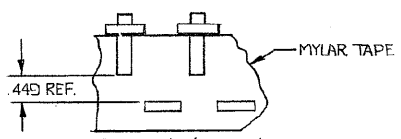
NUMBER 201609

NOTES:
 ⚠️ OBSOLETE PARTS: OBSOLETE CIS STREAMLINING PER D.RENAUD/D.SINISI

201609-1	1. AS SHOWN.
OBSOLETE 201609-2	1. SAME AS -1 EXCEPT; 2. FINISH OF ITEM #1, SILVER OVER NICKEL
OBSOLETE 201609-3	1. SAME AS -1 EXCEPT; 2. FINISH OF ITEM #1, .0001 MIN GOLD OVER .0001 MIN SILVER
OBSOLETE 201609-4	1. SAME AS -1 EXCEPT; 2. MTD ON TAPE.
201609-5	1. SAME AS -1 EXCEPT; 2. FINISH - .000050 MIN GOLD OVER .000050 MIN NICKEL
OBSOLETE 201609-6	1. SAME AS -5 EXCEPT; 2. MTD ON TAPE.



WHEN ORDERING CONTACT ON TAPE, ORDER BY THE TAPE NUMBER PLUS THE PACKAGING CODE AS FOLLOWS:
 1. FOR USE WITH AMP TAPETRONIC, PNEUMATIC TOOL - A. 1000 PARTS TO A BOX ADD PACKAGING CODE: 1MBOX
 2. FOR USE WITH 4/8 INDENT STRIPPER CRIMPER - A. 1000 PARTS TO A REEL ADD PACKAGING CODE: 1MREEL
 B. 5000 PARTS TO A REEL ADD PACKAGING CODE: 5MREEL



TAPE MTD ASSY
 201609-4 AND
 201609-6 ONLY.

47 DIMENSIONS IN INCHES. DO NOT SCALE PRINT

REV	DESCRIPTION	DATE	BY	CHK	DATE
P1	REVISED PER ECO-09-028346	11/27/09	AK	AK	26NOV 09
P	REACTIVATE - 4 PER EC	6/1/09	GT	AK	6/1/09
DG1C	62-98	1/28/09	AK	AK	1/28/09
N	OBS - 4 PER ECN B05016	11/27/09	AK	AK	11/27/09
M	OBS - 3 PER ECN AD2048	11/27/09	AK	AK	11/27/09
L	REV FOR ECO B02619	11/27/09	AK	AK	11/27/09
K	OBS - 2 PER ECN	11/27/09	AK	AK	11/27/09
J	REACTIVATE - 6 PER ECN	11/27/09	AK	AK	11/27/09
H	OBSOLETE - 6 PER ECN	11/27/09	AK	AK	11/27/09
G	REVISED	11/27/09	AK	AK	11/27/09
F	REACTIVATED - 3 PER ECN	11/27/09	AK	AK	11/27/09
E	FOR SILENCE - 5	11/27/09	AK	AK	11/27/09
D	NOTE ADDED	11/27/09	AK	AK	11/27/09
C	REVISED	11/27/09	AK	AK	11/27/09
B	REV RETAINER SPRING TO SET.	11/27/09	AK	AK	11/27/09
A	REVISED	11/27/09	AK	AK	11/27/09
0	REVISED	11/27/09	AK	AK	11/27/09
LTR	REVISION RECORD	11/27/09	AK	AK	11/27/09

© 1961 BY AMP INCORPORATED
 AMP PRODUCTS COVERED BY PATENTS
 AND/OR PATENTS PENDING

MATERIAL	SEE CALL OUT
HEAT TREAT	#
FINISH	#
SEE CALL OUT	AMP
NAME	#20 SOCKET CONTACT ASSY
WIRE SIZE	28-24-.035-.055 INS. DIA.
SCALE	10:1
LOC	B
REV	P1
NO	201609

TOLERANCES
 EXCEPT AS NOTED
 DECIMALS: ± .005
 FRACTIONS: ± 1/64
 ANGLES: ± 10'

CUSTOMER DRAWING