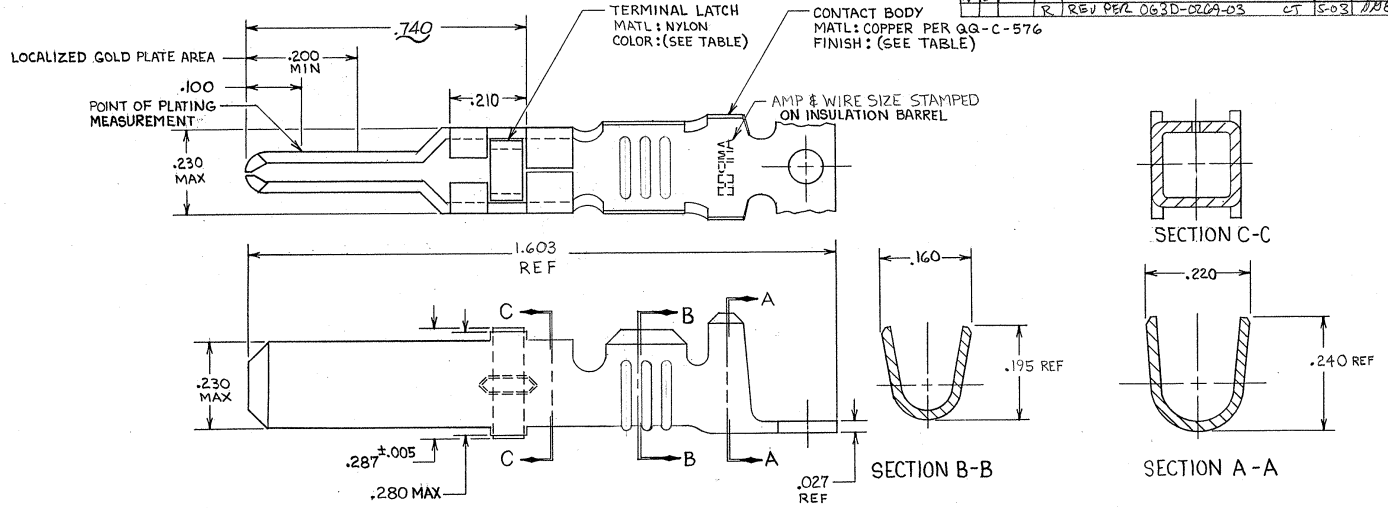


DRAWING MADE IN THIRD ANGLE PROJECTION

THIS DRAWING IS UNPUBLISHED. RELEASED FOR PUBLICATION 19
 © COPYRIGHT 19 BY AMP INCORPORATED, HARRISBURG, PA. ALL INTERNATIONAL RIGHTS RESERVED. AMP PRODUCTS MAY BE COVERED BY U.S. AND FOREIGN PATENTS AND/OR PATENTS PENDING.

P	F	ZONE	LTR	DESCRIPTION	DATE	APPROVED
✓	✓	L		REDRAWN & REVISED PER ECN R-1451	3-30-85	<i>[Signature]</i>
✓	✓	M		REV. / ECN R-1946	3-4-86	<i>[Signature]</i>
✓	✓	N		OBSOLETE -3 PER R-2760	3-4-87	<i>[Signature]</i>
✓	✓	P		ADDED -7 PER DFSS24 NPR 91-0301	10-25-91	<i>[Signature]</i>
✓	✓	R		REV PER 063D-0209-03	5-0-03	<i>[Signature]</i>



- ▲ REELED FOR USE WITH STANDARD APPLICATORS.
- ▲ REELED FOR USE WITH HEAVY DUTY MINI-APPLICATORS.
- ▲ PLATED WITH .000100 MIN SILVER PER Q.Q.-S-365.
- ▲ PLATED WITH .000015 MIN GOLD PER MIL-G-45204 IN THE LOCALIZED GOLD PLATE AREA, GOLD FLASH ON THE REMAINDER, OVER .000030 MIN NICKEL PER Q.Q.-N-290.
- ▲ PLATED WITH .000030 MIN GOLD PER MIL-G-45204 IN THE LOCALIZED GOLD PLATE AREA, GOLD FLASH ON THE REMAINDER, OVER .000030 MIN NICKEL PER Q.Q.-N-290.
- ▲ PLATED WITH .000050 MIN 93-7% TIN-LEAD ALLOY OVER .000030 MIN NICKEL PER Q.Q.-N-290.
- 7. WIRE RANGE = 12-16 AWG.
- 8. INSULATION RANGE = .140-.165 DIA.
- ▲ PLATED TIN (NO LEAD) .000050 MIN THK PER ASTM-B-595 OVER NICKEL .000030 MIN THK PER Q.Q.-N-290.

BLACK	▲	66262-5	66256-9	▲
BLACK	▲	66262-5	66256-9	▲
NATURAL	▲	66262-4	66256-7	▲
NATURAL	▲	66262-4	66256-6	▲
BLACK	▲	66262-1	66256-5	▲
BLACK	▲	66262-2	66256-4	▲
BLACK	▲	66262-2	66256-3	▲
BLACK	▲	66262-2	66256-2	▲
BLACK	▲	66262-1	66256-1	▲

UNLESS OTHERWISE SPECIFIED DIMENSIONS ARE IN INCHES. TOLERANCES ON: DECIMALS ±.010 ANGLES ±	CONTRACT NO	AMP AMP INCORPORATED Harrisburg, Pa. 17105	
	MATERIAL SEE CALLOUT	DR <i>[Signature]</i> 7-30-85 CHKD <i>[Signature]</i> 10-25-85 APPD <i>[Signature]</i> 10-25-85	NAME MALE TYPE XII GROUND CONTACT STRIP ASSEMBLY
FINISH SEE DASH NO	OTHER APPD	SIZE C	FSCM NO 00779
		DRAWING NO 66256	SHEET
		SCALE NTS	

CUSTOMER DRAWING

66256