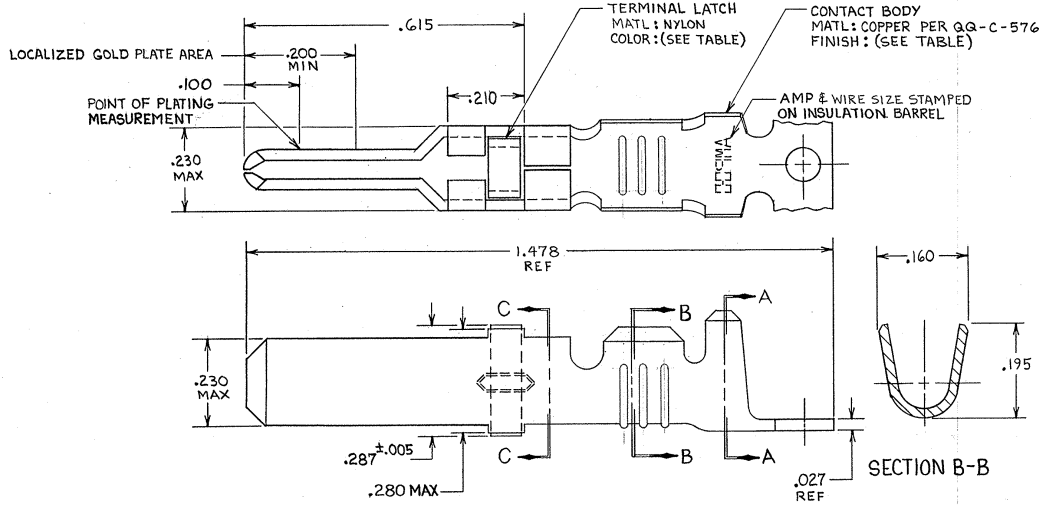


DRAWING MADE IN THIRD ANGLE PROJECTION

THIS DRAWING IS UNPUBLISHED. RELEASED FOR PUBLICATION 19
 © COPYRIGHT 19 BY AMP INCORPORATED, HARRISBURG, PA. ALL INTERNATIONAL RIGHTS RESERVED. AMP PRODUCTS MAY BE COVERED BY U.S. AND FOREIGN PATENTS AND/OR PATENTS PENDING.

REVOLUTIONS		DATE	APPROVED
✓	V	1-30-85	<i>[Signature]</i>
✓	W	3-4-87	<i>[Signature]</i>
✓	Y	12-17-87	<i>[Signature]</i>
✓	Z	5-03	<i>[Signature]</i>



- ▲ REELED FOR USE WITH STANDARD APPLICATORS.
- ▲ REELED FOR USE WITH HEAVY DUTY MINI-APPLICATORS.
- ▲ PLATED WITH .000100 MIN SILVER PER QQ-S-365.
- ▲ PLATED WITH .000015 MIN GOLD PER MIL-G-45204 IN THE LOCALIZED GOLD PLATE AREA, GOLD FLASH ON THE REMAINDER, OVER .000030 MIN NICKEL PER QQ-N-290.
- ▲ PLATED WITH .000030 MIN GOLD PER MIL-G-45204 IN THE LOCALIZED GOLD PLATE AREA, GOLD FLASH ON THE REMAINDER, OVER .000030 MIN NICKEL PER QQ-N-290.
- ▲ PLATED WITH .000050 MIN 93-7% TIN-LEAD ALLOY OVER .000030 MIN NICKEL PER QQ-N-290.
- 7. WIRE RANGE = 12-16 AWG.
- 8. INSULATION RANGE = .140-.165 DIA.
- ▲ PLATED TIN (NO LEAD) .000050 MIN THK PER ASTM-B-545 OVER NICKEL .000030 MIN THK PER QQ-N-290

BLACK	▲	66261-5	1-66255-2	▲
BLACK	▲	66261-5	1-66255-1	▲
NATURAL	NONE	7	1-66255-0	▲
NATURAL	NONE	7	66255-9	▲
NATURAL	▲	66261-4	66255-8	▲
NATURAL	▲	66261-4	66255-7	▲
BLACK	▲	66261-2	66255-6	▲
BLACK	▲	66261-1	66255-5	▲
BLACK	▲	66261-3	66255-4	▲
BLACK	▲	66261-3	66255-3	▲
BLACK	▲	66261-2	66255-2	▲
BLACK	▲	66261-1	66255-1	▲

UNLESS OTHERWISE SPECIFIED DIMENSIONS ARE IN INCHES. TOLERANCES ON: DECIMALS ±.010 ANGLES ±.010	CONTRACT NO	AMP AMP INCORPORATED Harrisburg, Pa. 17105	
	MATERIAL SEE CALLOUT	DR <i>[Signature]</i> 7-27-85 CHK <i>[Signature]</i> 10-1-85 APPD <i>[Signature]</i> 10-5-85	NAME MALE TYPE XII CONTACT STRIP ASSEMBLY
FINISH SEE DASH NO	DSGN APPD OTHER APPD	SIZE C	FSCM NO 00779
		DRAWING NO 66255	SHEET

CUSTOMER DRAWING