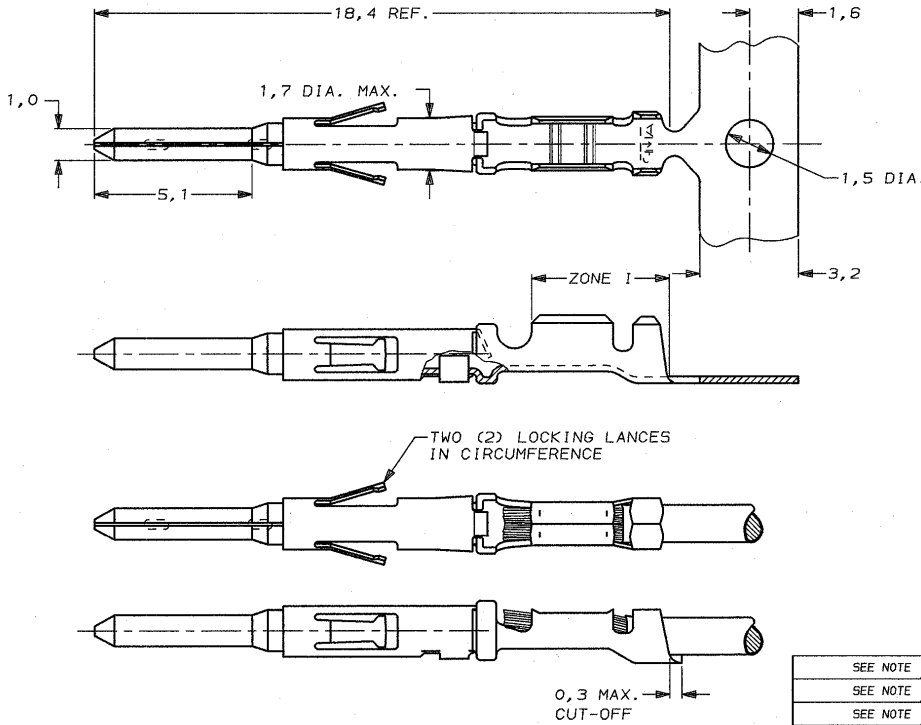


DO NOT SCALE  
DIMENSIONS IN mm

METRIC

THIRD ANGLE  
PROJECTION



NOTES:

- △ FOR MINI-APPLICATOR CRIMPING.
- △ FOR STANDARD-APPLICATOR CRIMPING.
- 3 FOR LOOSE-PIECE VERSIONS SEE DWG. 166296
- △ UNDERCOATING: 1,3µm Ni.  
SELECTIVE : 0,8µm Au.  
ZONE I : BRIGHT TIN/LEAD PLATED.
- △ UNDERCOATING: 1,3µm Ni.  
SELECTIVE : 2,0µm Au.  
REMAINDER : GOLDFLASH.

WIRE RANGE :  
(0,2-0,56 mm<sup>2</sup>) 20-24 AWG  
INSULATION RANGE :  
1,57 DIA. MAX.

SEE NOTE 5	STAINLESS STEEL	BRASS	166046-4
SEE NOTE 4			166046-3
SEE NOTE 3			166046-1
PLATING OF BODY	MATERIAL OF SLEEVE	MATERIAL OF BODY	PARTNUMBER

CUSTOMER DRAWING				FOR REFERENCE ONLY WILL NOT BE UPDATED
© COPYRIGHT 19- BY AMP HOLLAND B.V.				
ALL INTERNATIONAL RIGHTS RESERVED. AMP PRODUCTS MAY BE COVERED BY U.S. AND FOREIGN AND/OR PATENTS PENDING.				
THIS DRAWING IS UNPUBLISHED AND/OR PATENTS PENDING.				
RELEASED FOR PUBLICATION				
<b>AMP</b>				AMP HOLLAND B.V. 's-Hertogenbosch, The Netherlands.
NAME				CONTACT ASSEMBLY-PIN TYPE XI, SIZE 20
LTR.	REVISION RECORD	DR.	CHK.	DATE
DR.:	J.v.LIEMPT	CHK.:	C.v.TILBURG	APP.:
DATE:	6 JAN 1993	DATE:	08-02-93	DATE:
DWG. No.				C-166046
REV. LTR.			G	SHEET
			1 OF 1	A3