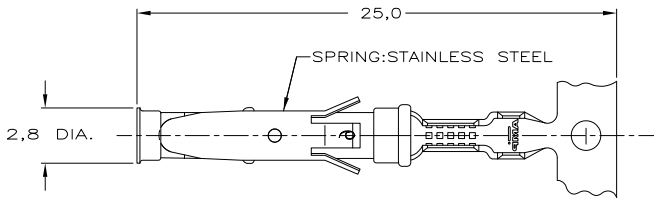


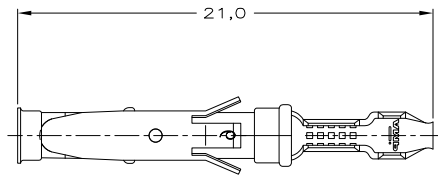
DO NOT SCALE
DIMENSIONS IN mm

METRIC

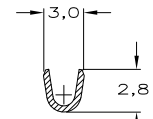
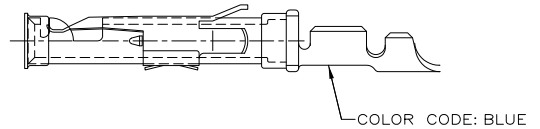
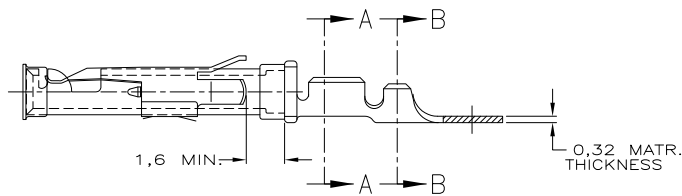
THIRD ANGLE
PROJECTION



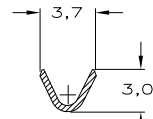
STRIP



LOOSE-PIECE



SECTION A-A

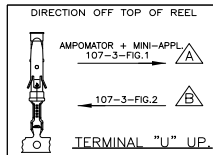


SECTION B-B

WIRE RANGE : 0,75-1,50 mm² (18-16 AWG)
INSUL. RANGE : 2,0-2,5 mm (.080-.100)

NOTES :

- FOR CRIMPDETAILS SEE AMP-SPEC. 114-19.000 .
 - MEETS PRODUCTSPECIFICATION 108-10042.
- ⚠ OBSOLETE PARTS: OBSOLETE CIS STREAMLINING PER D.RENAUD/D.SINISI



PARTNUMBER	DIRECTION OF REEL	LOOSE-PIECE	MATERIAL	PLATING
163767-6	⚠		PH.BRONZE	SILVER
163767-5	⚠		PH.BRONZE	SEL.GOLD
163767-4	⚠		PH.BRONZE	EL.TIN
163767-3	⚠	164840-3	PH.BRONZE	SILVER
163767-2	⚠	164840-2	PH.BRONZE	SEL.GOLD
163767-1	⚠	164840-1	PH.BRONZE	EL.TIN

CUSTOMER DRAWING

FOR REFERENCE ONLY
WILL NOT BE UPDATED

DR. L.V.D.HEYDEN DATE 19.08.1987
CHK. P.V.D.HAGEN DATE
APP. L.V.SOEST DATE

AMP-HOLLAND B.V.
's-Hertogenbosch, The Netherlands.

THIS DRAWING IS UNPUBLISHED RELEASED FOR PUBLICATION AUG. 1987

© COPYRIGHT 1987 BY AMP-HOLLAND B.V.
ALL INTERNATIONAL RIGHTS RESERVED.
AMP PRODUCTS MAY BE COVERED BY U.S. AND FOREIGN PATENTS AND/OR PATENTS PENDING.

WIRE RANGE - NAME
INSUL. RANGE - SOCKET TYPE III CONTACT
SIZE A3 SHEET 1 OF 1 DWG. No. 163767

REV. DATE
200988
REV.LTR. f1

NOTES	MATERIAL	THICKNESS	AREA
⚠	TIN	2,0 μm	ALL OVER
⚠	NICKEL GOLD	0,8 μm	ALL OVER CONTACT AREA BARREL
⚠	TIN/LEAD		
⚠	NICKEL GOLD	0,8 μm	ALL OVER CONTACT AREA ALL OVER
⚠	NICKEL GOLD	1,2 μm	ALL OVER CONTACT AREA ALL OVER
⚠	NICKEL SILVER	2,5 μm	ALL OVER CONTACT AREA BARREL
⚠	TIN/LEAD		
⚠	SILVER	0,5 μm	ALL OVER
⚠	SILVER	2,5 μm	ALL OVER

REV.	REVISION	ECN No.	DR.	DATE
F1	REVISED PER ECO-09-020689		KK	24AUG09

8 7 6 5 4 3 2 1