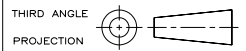
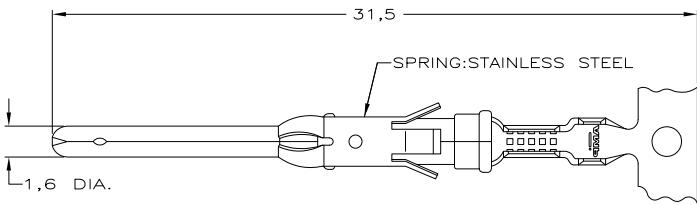


DO NOT SCALE
DIMENSIONS IN mm

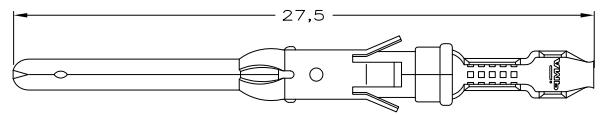
METRIC



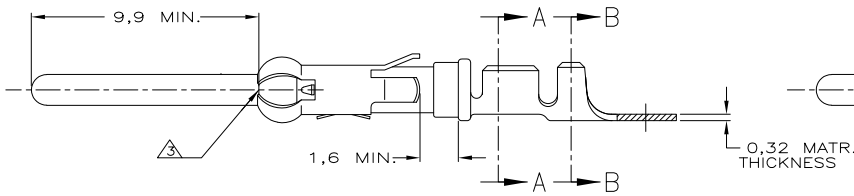
P		LTR		REVISIONS		DATE	DMN	APVD
				DESCRIPTION				
G1		REVISED PER		ECO-09-020689		24AUG09	KK	AEG



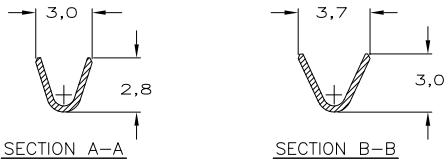
STRIP



LOOSE-PIECE



COLOR CODE: BLUE

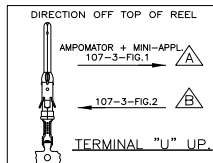


SECTION A-A

SECTION B-B

WIRE RANGE : 0,75-1,50 mm² (18-16 AWG)
INSUL. RANGE : 2,0 -2,5 mm (.080-.100)

- NOTES :
- FOR CRIMPDETAILS SEE AMP-SPEC. 114-19.000 .
 - MEETS PRODUCTSPECIFICATION 108-10042.
 - 0,40 MAX. GAP BETWEEN SPRING-NOSE AND CONTACT BODY.
- ⚠ OBSOLETE PARTS: OBSOLETE CIS STREAMLINING PER D.RENAUD/D.SINISI



PARTNUMBER	DIRECTION OF REEL	LOOSE-PIECE	MATERIAL	PLATING
163766-5	⚠		PH.BRONZE	EL.TIN
163766-4	⚠	164839-4	PH.BRONZE	ECON.GOLD
163766-3	⚠	164839-3	PH.BRONZE	SILVER
163766-2	⚠	164839-2	PH.BRONZE	SEL.GOLD
163766-1	⚠	164839-1	PH.BRONZE	EL.TIN

CUSTOMER DRAWING

FOR REFERENCE ONLY
WILL NOT BE UPDATED

AMP-HOLLAND B.V.
's-Hertogenbosch, The Netherlands.

THIS DRAWING IS UNPUBLISHED. RELEASED FOR PUBLICATION AUG. ,1987

© COPYRIGHT 19 87 BY AMP-HOLLAND B.V.
ALL INTERNATIONAL RIGHTS RESERVED.
AMP PRODUCTS MAY BE COVERED BY U.S. AND FOREIGN PATENTS AND/OR PATENTS PENDING.

NOTES	MATERIAL	THICKNESS	AREA
⚠	TIN	2,0 μm	ALL OVER
⚠	NICKEL GOLD	0,8 μm	ALL OVER CONTACT AREA BARREL
⚠	TIN/LEAD		
⚠	NICKEL GOLD	0,8 μm	ALL OVER CONTACT AREA ALL OVER
⚠	NICKEL GOLD	1,2 μm	ALL OVER CONTACT AREA ALL OVER
⚠	NICKEL SILVER	2,5 μm	ALL OVER CONTACT AREA BARREL
⚠	TIN/LEAD		
⚠	SILVER	0,5 μm	ALL OVER
⚠	SILVER	2,5 μm	ALL OVER

DR.	DATE	WIRE RANGE	NAME	REV. DATE
L.V.D.HEYDEN	19.08.1987	-	PIN TYPE III CONTACT	D M Y
CHK. P.V.D.HAGEN	DATE	INSUL.RANGE	SIZE 16	200988
APP. L.V.SOEST	DATE	SIZE A3	SHEET 1 of 1	REV.LTR. G1
		DWG. No.	163766	

8 | 7 | 6 | 5 | 4 | 3 | 2 | 1