

4

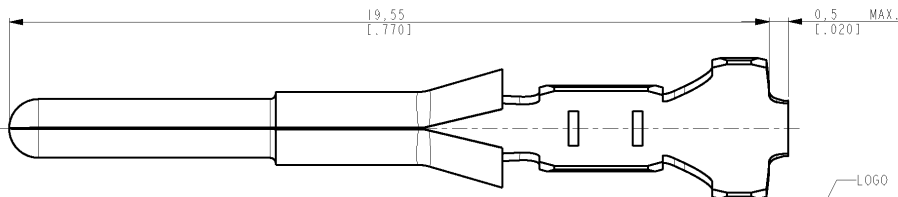
3

2

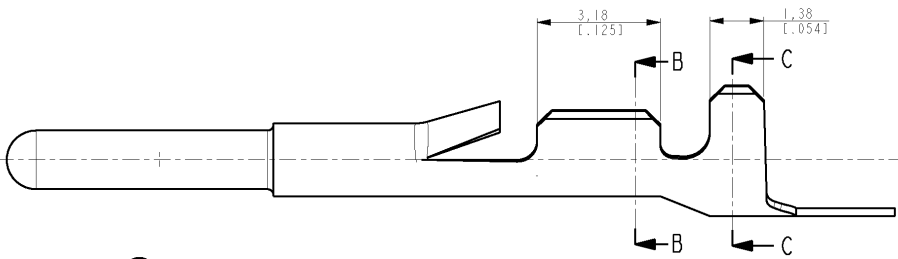
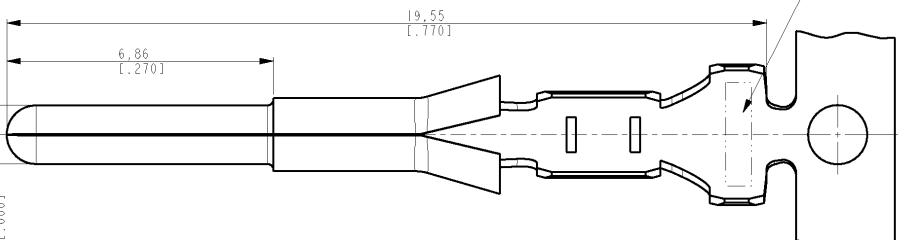
1

THIS DRAWING IS UNPUBLISHED. RELEASED FOR PUBLICATION 20  
 COPYRIGHT 20 BY TYCO ELECTRONICS CORPORATION. ALL RIGHTS RESERVED.

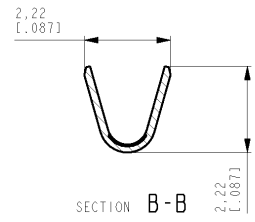
LOC	DIST	REVISIONS			
P	LTR	DESCRIPTION	DATE	DWN	APVD
AP	-				
H1		REV. BY ECO-09-024939	11NOV2009	HC	WLS
H2		REV. BY ECO-10-011878	15JUN2010	HC	WLS



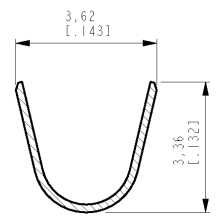
AFTER CUTOFF



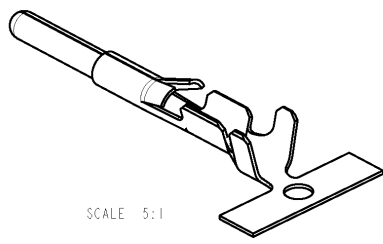
NOTES:  
 △ WIRE RANGE #22 TO #18 AWG; INSULATION RANGE 1.5 mm TO 2.8 mm [0.060 TO .100 INCH]



SECTION B-B



SECTION C-C



SCALE 5:1

FINISH	MATERIAL	DESCRIPTION	PARTNUMBER
POST-TIN OVER NICKEL	BRASS	LOOSE PIECE	61062-1
PRE-TIN	BRASS	STRIP PRODUCT	61062-3
POST-TIN OVER NICKEL	BRASS	STRIP PRODUCT	61062-1

DIMENSIONS: mm [inch]		TOLERANCES UNLESS OTHERWISE SPECIFIED: 0 PLC ± 1 PLC ± 2 PLC ±0,31(.012) 3 PLC ± 4 PLC ± ANGLES 82°		DWN H.C. CANTER [11NOV2009] CHK W.L. STEFANI [12NOV2009]	TYCO ELECTRONICS DO BRASIL LTDA. São Paulo - Brasil
MATERIAL - FINISH -		NAME .060 COMBOLINE PIN		SIZE CAGE CODE DRAWING NO RESTRICTED TO A3 00779 C-61062	
CUSTOMER DRAWING				SCALE 10/1	SHEET 1 OF 1 REV H2

AMP 1470-19 REV 31MAR2000