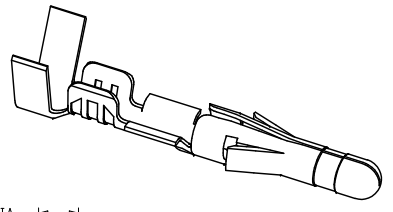
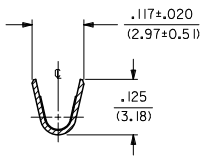
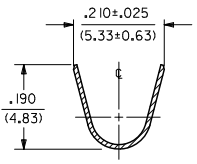
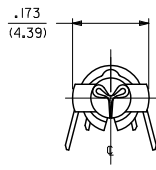
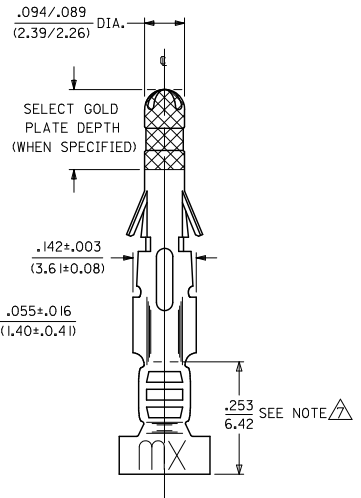
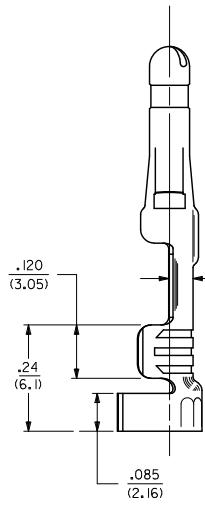
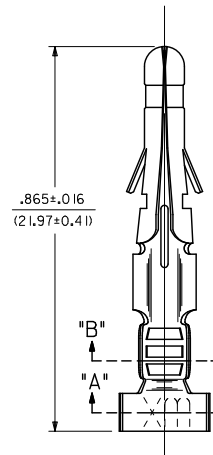


PART NO.	ENG. NO.
02-09-2103	1190-(P901)L
02-09-2101	1190-(P901)
02-09-6110	1190-(591)L
02-09-6101	1190-(591)
02-09-6106	1190-(550)L
02-09-6100	1190-(550)



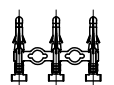
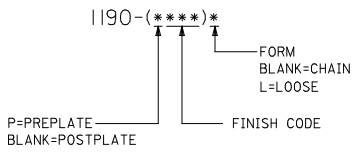
SECT. "A-A"

SECT. "B-B"



- NOTES:
- MATERIAL:  
CARTRIDGE BRASS
  - FINISH CODES:  
901 HOT TIN DIP .000020/(0.00051) MIN.  
591 SELECT GOLD PLATE .000050/(0.00127) MIN. IN CONTACT AREA.  
OVER .000050/(0.00127) MIN. NICKEL OVERALL  
WITH .000010/(0.00025) MAX. GOLD FLASH OVERALL.  
550 SELECT GOLD PLATE .000015/(0.00038) MIN. IN CONTACT AREA.  
OVER .000030/(0.00076) MIN. NICKEL OVERALL  
WITH .000010/(0.00025) MAX. GOLD FLASH OVERALL.
  - PRODUCT SPECIFICATION: PS-43660-9999
  - PACKAGING SPECIFICATION: PK-1190-001
  - INSERTION FORCE: 5.0 LBS. MAX. WHEN TERMINAL IS INSERTED INTO .093 SERIES HOUSING.
  - RETENTION: 20 LBS. MIN. FROM HOUSING.
  - $\Delta$  DIMENSION FROM THE END OF THE TERMINAL TO THE END OF THE BRUSH ON THE WIRE CRIMPED INTO THE TERMINAL.
  - TERMINAL FOR USE WITH .093/(2.36) SERIES HOUSINGS AND WILL ACCEPT 14 THRU 20 AWG WIRE.

LEGEND



CHAIN FORM FULL SCALE

<b>REVISE NOTE 5</b> DEC. NO. UCP2010-3269 DRW: AELHAG 2010/06/23 CHK: JBELL 2010/06/23 APPR: FSMITH 2010/06/29 BSZ	QUALITY SYMBOLS $\nabla=0$ $\nabla=0$	GENERAL TOLERANCES (UNLESS SPECIFIED): 4 PLACES ±.005 ±.005 3 PLACES ±.010 ±.010 2 PLACES ±.025 ±.014 1 PLACE ±.015 ±.015 ANGULAR ±1/2°		DIMENSION STYLE IN/MM	SCALE 6:1	DESIGN UNITS INCH	$\triangle$ THIRD ANGLE PROJECTION		
		DRAWN BY: AELHAG DATE: 2010/06/23 CHECKED BY: JBELL DATE: 2010/06/23 APPROVED BY: FSMITH DATE: 2010/06/29		TITLE CRIMP TERMINAL, MALE .093/(2.36) DIA. FOR 14 THRU 20 AWG WIRE		MOLEX INCORPORATED			
		DRAFT WHERE APPLICABLE MUST REMAIN WITHIN DIMENSIONS		SEE CHART		SD-1190-*		SHEET NO. 1 OF 1	
		THIS DRAWING CONTAINS INFORMATION THAT IS PROPRIETARY TO MOLEX INCORPORATED AND SHOULD NOT BE USED WITHOUT WRITTEN PERMISSION							
		MATERIAL NO. DOCUMENT NO.							