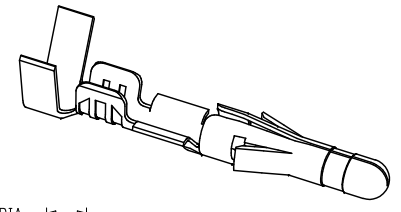
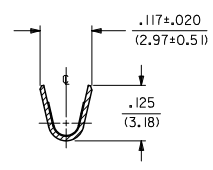
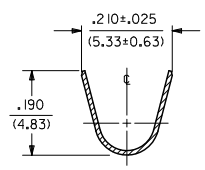
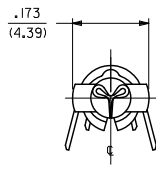
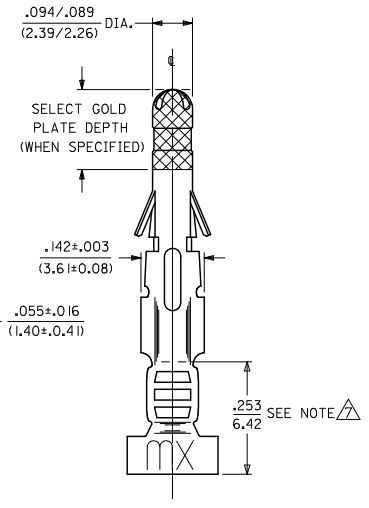
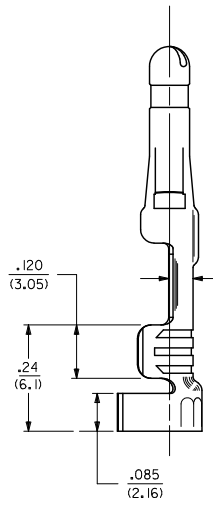
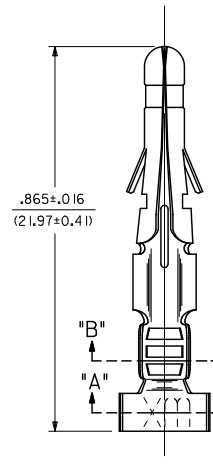


PART NO.	ENG. NO.
02-09-2103	1190-(P901)L
02-09-2101	1190-(P901)
02-09-6110	1190-(591)L
02-09-6101	1190-(591)
02-09-6106	1190-(550)L
02-09-6100	1190-(550)



SECT. "A-A"

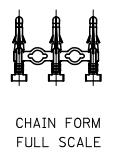
SECT. "B-B"



- NOTES:
- MATERIAL:  
CARTRIDGE BRASS
  - FINISH CODES:  
901 HOT TIN DIP .000020/(0.00051) MIN.  
591 SELECT GOLD PLATE .000050/(0.00127) MIN. IN CONTACT AREA.  
OVER .000050/(0.00127) MIN. NICKEL OVERALL  
WITH .000010/(0.00025) MAX. GOLD FLASH OVERALL.  
550 SELECT GOLD PLATE .000015/(0.00038) MIN. IN CONTACT AREA.  
OVER .000030/(0.00076) MIN. NICKEL OVERALL  
WITH .000010/(0.00025) MAX. GOLD FLASH OVERALL.
  - PRODUCT SPECIFICATION: PS-43660-9999
  - PACKAGING SPECIFICATION: PK-1190-001
  - INSERTION FORCE: 5.0 LBS. MAX. WHEN TERMINAL IS INSERTED INTO .093 SERIES HOUSING.
  - RETENTION: 20 LBS. MIN. FROM HOUSING.
  - $\Delta$  DIMENSION FROM THE END OF THE TERMINAL TO THE END OF THE BRUSH ON THE WIRE CRIMPED INTO THE TERMINAL.
  - TERMINAL FOR USE WITH .093/(2.36) SERIES HOUSINGS AND WILL ACCEPT 14 THRU 20 AWG WIRE.

**LEGEND**

1190-(\*\*\*\*)\*  
 P=PREPLATE  
 BLANK=POSTPLATE  
 FORM  
 BLANK=CHAIN  
 L=LOOSE  
 FINISH CODE



<b>REVISE NOTE 5</b> DEC. NO. UCP2010-3269 DRW: AELHAG 2010/06/23 CHK: JBELL 2010/06/23 APPR: FSMITH 2010/06/29	QUALITY SYMBOLS $\nabla=0$ $\nabla=0$	GENERAL TOLERANCES (UNLESS SPECIFIED): 4 PLACES ±.005 ±.005 3 PLACES ±.010 ±.010 2 PLACES ±.025 ±.014 1 PLACE ±.015 ±.015 ANGULAR ±1/2°		DIMENSION STYLE IN/MM	SCALE 6:1	DESIGN UNITS INCH	$\triangle$ THIRD ANGLE PROJECTION		
		DRAWN BY: AELHAG DATE: 2010/06/23 CHECKED BY: JBELL DATE: 2010/06/23 APPROVED BY: FSMITH DATE: 2010/06/29		TITLE CRIMP TERMINAL, MALE .093/(2.36) DIA. FOR 14 THRU 20 AWG WIRE		MOLEX INCORPORATED			
		MATERIAL NO. SD-1190-* DOCUMENT NO.		SHEET NO. 1 OF 1		THIS DRAWING CONTAINS INFORMATION THAT IS PROPRIETARY TO MOLEX INCORPORATED AND SHOULD NOT BE USED WITHOUT WRITTEN PERMISSION			
		DRAFT WHERE APPLICABLE MUST REMAIN WITHIN DIMENSIONS		SEE CHART		SIZE		THIS DRAWING CONTAINS INFORMATION THAT IS PROPRIETARY TO MOLEX INCORPORATED AND SHOULD NOT BE USED WITHOUT WRITTEN PERMISSION	
		BSZ		REN		C		C	