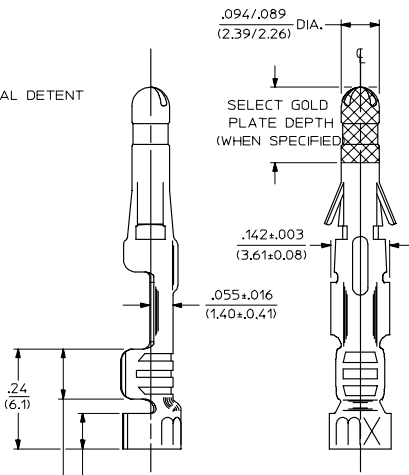
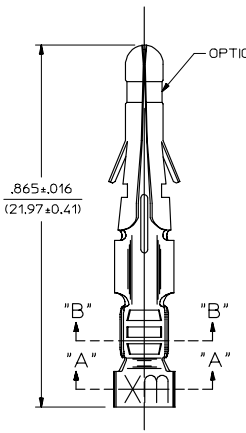
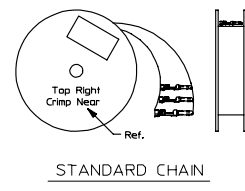
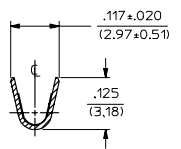
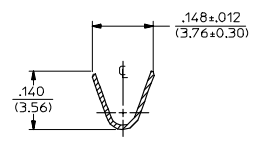
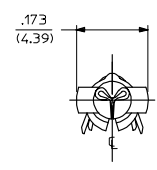
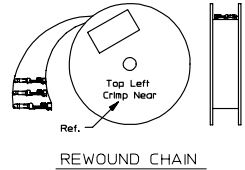


PART NO.	ENG. NO.
02-09-2118	1380-(P901)L
02-09-2116	1380-(P901)
02-09-2127	1380-(P901)1
02-09-6126	1380-(591)L
02-09-6125	1380-(591)
02-09-6123	1380-(550)L
02-09-6122	1380-(550)
02-09-2119	1380-A(P901)L
02-09-2117	1380-A(P901)



**LEGEND**

1380-\*(\*)\*(\*)\*(\*)\*

OPTIONAL DETENT  
 BLANK = WITH DETENT  
 A = WITHOUT DETENT

P = PREPLATE  
 BLANK = POSTPLATE

FORM  
 BLANK = STD. CHAIN  
 A = REWOUND CHAIN  
 L = LOOSE  
 1 = STD. CHAIN WITH INTERLEAF PAPER

FINISH CODE  
 (SEE NOTE 2)

- NOTES:**
- MATERIAL: BRASS
  - FINISH:
    - 999 UNPLATED
    - 901 HOT TIN DIP .000020/(0.0005) MIN.
    - 591 SELECT GOLD PLATE .000050/(0.00127) MIN. IN CONTACT AREA, OVER .000050/(0.00127) MIN. NICKEL OVERALL WITH .000010/(0.00025) MAX. GOLD FLASH OVERALL.
    - 550 SELECT GOLD PLATE .000015/(0.00038) MIN. IN CONTACT AREA, OVER .000030/(0.00076) MIN. NICKEL OVERALL WITH .000010/(0.00025) MAX. GOLD FLASH OVERALL.
  - PRODUCT SPECIFICATION: PS-02-09.
  - PACKAGING INFORMATION: NOT AVAILABLE
  - TERMINAL FOR USE WITH .093/(2.36) SERIES HOUSINGS AND WILL ACCEPT 18 THRU 22 AWG
  - INSERTION FORCE: 3.5 LBS. MAX. WHEN TERMINAL IS INSERTED INTO AN .093 SERIES HOUSING.
  - TERMINAL RETENTION: 20 LBS. MIN. FROM HOUSING.

REVISED/DRAWN EC NO. UCP2004-2354 DRAWN: ROLTS 2005/07/20 CHKD: FSMITH 2005/07/20 APPR: FSMITH 2005/07/20 REV	QUALITY SYMBOLS ▽-0 ▽-0	GENERAL TOLERANCES (UNLESS SPECIFIED)		SCALE 6:1	DESIGN UNITS INCH	THIRD ANGLE PROJECTION	REVISE ON CAD ONLY
		4 PLACES ± --- ± ---	3 PLACES ± --- ± .010	2 PLACES ± 0.25 ± .14	1 PLACE ± 0.35 ± ---	DIMENSION STYLE IN/MM	TITLE
DRAFT WHERE APPLICABLE MUST REMAIN WITHIN DIMENSIONS		APPROVED BY RAS		DATE 1987/11/06	CHECKED BY RW	DATE 1987/11/06	MATERIAL NO. SEE CHART
				DOCUMENT NO. SD-1380-*	MOLEX INCORPORATED		SHEET NO. 1 OF 1
THIS DRAWING CONTAINS INFORMATION THAT IS PROPRIETARY TO MOLEX INCORPORATED AND SHOULD NOT BE USED WITHOUT WRITTEN PERMISSION							