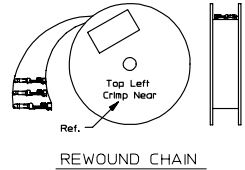
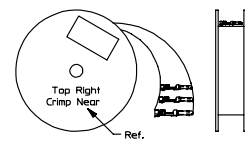


PART NO.	ENG. NO.
02-09-2118	1380-(P901)L
02-09-2116	1380-(P901)
02-09-2127	1380-(P901)1
02-09-6126	1380-(591)L
02-09-6125	1380-(591)
02-09-6123	1380-(550)L
02-09-6122	1380-(550)
02-09-2119	1380-A(P901)L
02-09-2117	1380-A(P901)



REWOUND CHAIN

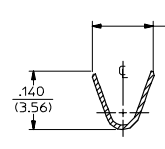
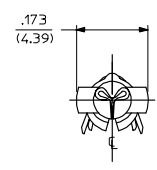


STANDARD CHAIN

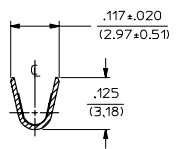
LEGEND

1380-\*(\*)\*\*\*)\*  
 OPTIONAL DETENT  
 BLANK = WITH DETENT  
 A = WITHOUT DETENT  
 P = PREPLATE  
 BLANK = POSTPLATE  
 FORM  
 BLANK = STD. CHAIN  
 A = REWOUND CHAIN  
 L = LOOSE  
 1 = STD. CHAIN WITH INTERLEAF PAPER  
 FINISH CODE  
 (SEE NOTE 2)

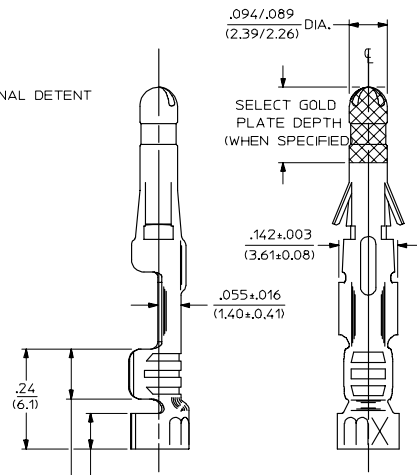
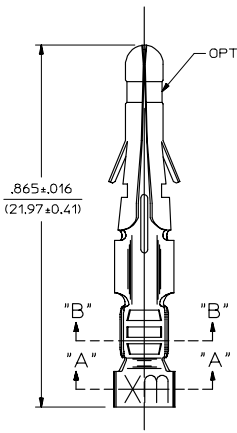
- NOTES:
- MATERIAL: BRASS
  - FINISH:
    - 999 UNPLATED
    - 901 HOT TIN DIP .000020/(0.0005) MIN.
    - 591 SELECT GOLD PLATE .000050/(0.00127) MIN. IN CONTACT AREA, OVER .000050/(0.00127) MIN. NICKEL OVERALL WITH .000010/(0.00025) MAX. GOLD FLASH OVERALL.
    - 550 SELECT GOLD PLATE .000015/(0.00038) MIN. IN CONTACT AREA, OVER .000030/(0.00076) MIN. NICKEL OVERALL WITH .000010/(0.00025) MAX. GOLD FLASH OVERALL.
  - PRODUCT SPECIFICATION: PS-02-09.
  - PACKAGING INFORMATION: NOT AVAILABLE
  - TERMINAL FOR USE WITH .093/(2.36) SERIES HOUSINGS AND WILL ACCEPT 18 THRU 22 AWG
  - INSERTION FORCE: 3.5 LBS. MAX. WHEN TERMINAL IS INSERTED INTO AN .093 SERIES HOUSING.
  - TERMINAL RETENTION: 20 LBS. MIN. FROM HOUSING.



SECT. "A-A"



SECT. "B-B"



REVISED/DRAWN EC NO. UCP2004-2354 DRAWN: ROLTS 2005/07/20 CHKD: FSMITH 2005/07/20 APPR: FSMITH 2005/07/20	QUALITY SYMBOLS ▽-0 ▽-0	GENERAL TOLERANCES (UNLESS SPECIFIED)		SCALE 6:1	DESIGN UNITS INCH	THIRD ANGLE PROJECTION	REVISE ON CAD ONLY
		mm	INCH	DIMENSION STYLE IN/MM		TITLE	
REV BV	DESCRIPTION	4 PLACES ±---	±---	DRAWN BY	DATE	CRIMP TERMINAL .093 DIA., MALE FOR 18 THRU 22 AWG. WIRE	
		3 PLACES ±---	±.010	GEP	1987/11/06	MOLEX INCORPORATED	
		2 PLACES ±0.25	±.14	CHECKED BY	DATE	MATERIAL NO. DOCUMENT NO. SHEET NO.	
		1 PLACE ±0.35	±---	RW	1987/11/06	SEE CHART SD-1380-* 1 OF 1	
DRAFT WHERE APPLICABLE		ANGULAR ±1/2°		APPROVED BY	DATE	THIS DRAWING CONTAINS INFORMATION THAT IS PROPRIETARY TO MOLEX INCORPORATED AND SHOULD NOT BE USED WITHOUT WRITTEN PERMISSION	
MUST REMAIN WITHIN DIMENSIONS				RAS	1987/11/06		