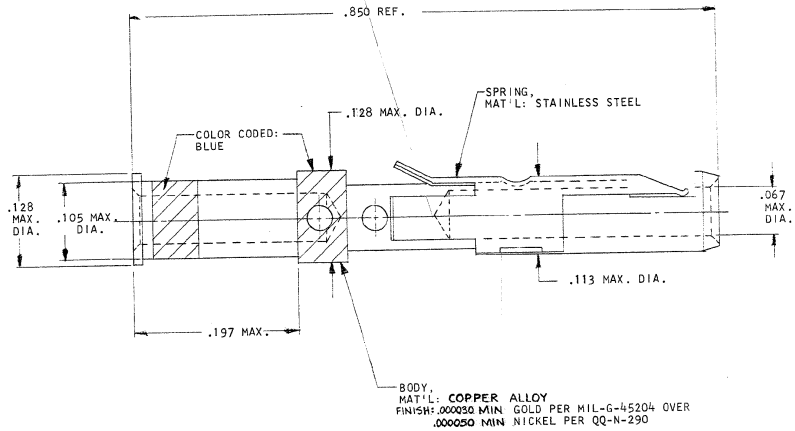
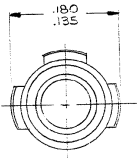


DRAWING MADE IN THIRD ANGLE PROJECTION

© COPYRIGHT 1978 BY AMP INCORPORATED, HARRISBURG, PA.
ALL INTERNATIONAL RIGHTS RESERVED. AMP INCORPORATED PRODUCTS
COVERED BY U. S. AND FOREIGN PATENTS AND/OR PATENTS PENDING.

207896-1 1. AS SHOWN.

REVISIONS		DATE	APPROVED
P	F		
D	O	7/27/78	[Signature]
	A	9/2/81	[Signature]
	B	3/21/89	[Signature]



BODY, MAT'L: COPPER ALLOY
FINISH: .000050 MIN GOLD PER MIL-G-45204 OVER
.000050 MIN NICKEL PER QQ-N-290

UNLESS OTHERWISE SPECIFIED DIMENSIONS ARE IN INCHES. TOLERANCES ON: DECIMALS $\pm .01$ ANGLES $\pm 1^\circ$		CONTRACT NO	AMP INCORPORATED Harrisburg, Pa.
MATERIAL SEE CALLOUTS	DR [Signature] 7/27/78 CHK [Signature] 7/11 APPD [Signature] 7/12/78 DSGN APPD [Signature]	NAME ASSEMBLY CONTACT, SOCKET #16, TYPE II, GROUNDING PIN FOR CPC (18-16) WIRE SIZE	
FINISH SEE CALLOUTS	OTHER APPD	SIZE CODE IDENT NO C 00779	DRAWING NO 207896
		SCALE	SHEET 1 of 1

CUSTOMER DRAWING

207896