

4

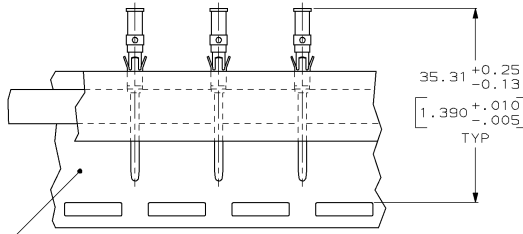
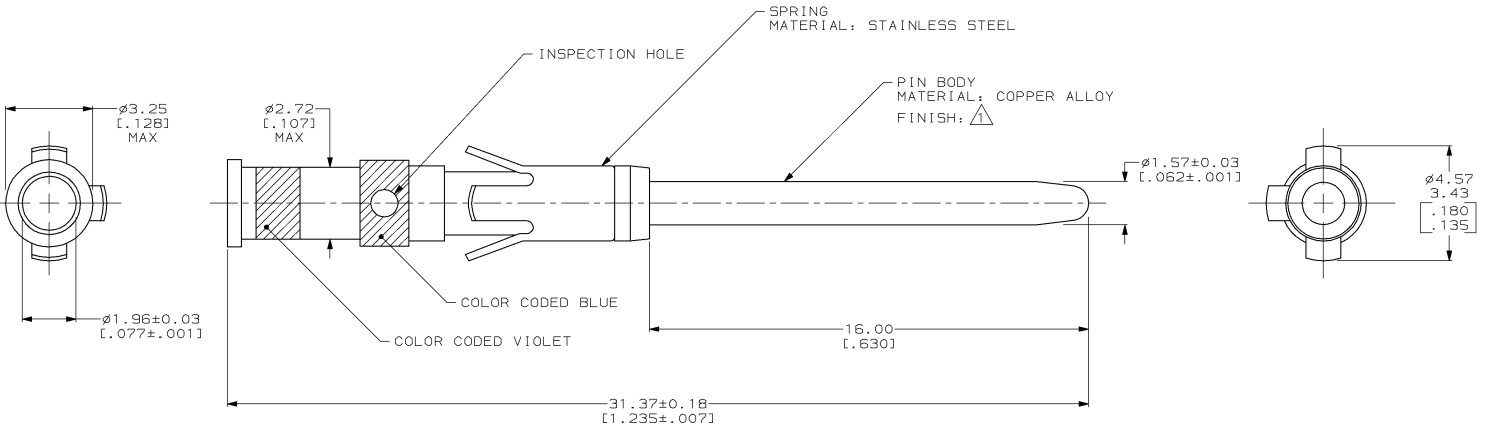
3

2

1

THIS DRAWING IS UNPUBLISHED. RELEASED FOR PUBLICATION BY AMP INCORPORATED. ALL RIGHTS RESERVED.

LOC	DIST	REVISIONS			
F	LIN	DESCRIPTION	DATE	BY	APPD
FT	8				
	D	REDRAWN W/O CHANGE PER EC 0320-109-96	26 NOV 97	-	-



Δ 0.76 μ m [TYP .000030] MIN GOLD OVER 1.27 μ m [TYP .000050] MIN NICKEL.

TAPE MTD	212618-2
STANDARD	212618-1
PACKAGING TYPE	PART NUMBER

THIS DRAWING IS A CONTROLLED DOCUMENT.		DRN: SJ CARBO	26 NOV 97	AMP	AMP Incorporated
DIMENSIONS: mm (INCHES)		CHK: R. STONE	10 DEC 97		Harrisburg, PA 17105-3608
DESIGNER: J. STEINHAUER		APPD: J. STEINHAUER	06 JAN 98	CONTACT ASSEMBLY, PIN, #16, TYPE II	
MATERIAL: SEE CALLOUTS		FINISH: SEE CALLOUTS	CUSTOMER DRAWING	SIZE: A2	CASE CODE: 00779
				DRAWING NO: 212618	RESTRICTED TO: -
				SCALE: 10:1	SHEET: 1 OF 1

212618

A