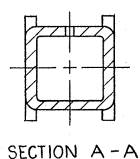
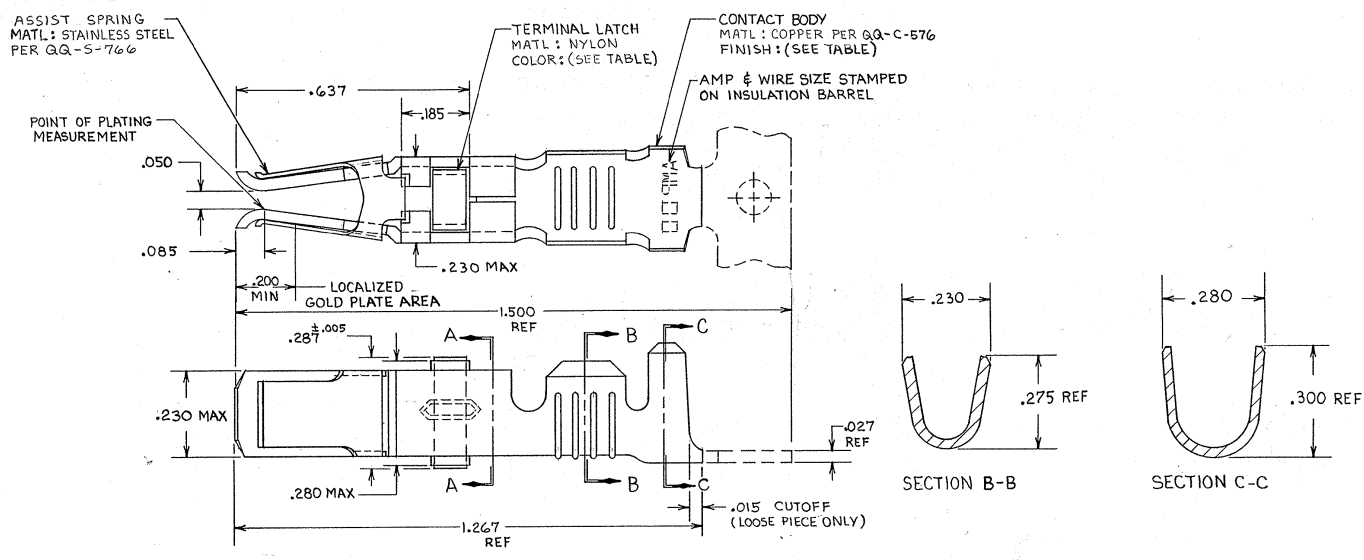


DRAWING MADE IN THIRD ANGLE PROJECTION

THIS DRAWING IS UNPUBLISHED. RELEASED FOR PUBLICATION

© COPYRIGHT 19 BY AMP INCORPORATED, HARRISBURG, PA. ALL INTERNATIONAL RIGHTS RESERVED. AMP PRODUCTS MAY BE COVERED BY U.S. AND FOREIGN PATENTS AND/OR PATENTS PENDING.

P	F	ZONE	LTR	DESCRIPTION	DATE	APPROVED
✓	✓	D		REDRAWN & REVISED PER ECLN R-1457	9-25-85	RLR
✓	✓	E		OBSOLETE -3-4, 81-0 PER R-2760	3-4-87	SLB
✓	✓	F		REV PER ECLN DF-5920	11-25-79	SLB
✓	✓	G		REV PER OGRD-264-03	5-03	DBE



- ▲ REELED FOR USE WITH STANDARD APPLICATORS.
- ▲ REELED FOR USE WITH HEAVY DUTY MINI-APPLICATORS.
- ▲ PLATED WITH .000100 MIN SILVER PER Q.Q.-S-365.
- ▲ PLATED WITH .000015 MIN GOLD PER MIL-G-45204 IN THE LOCALIZED GOLD PLATE AREA, GOLD FLASH ON THE REMAINDER, OVER .000030 MIN NICKEL PER Q.Q.-N-290.
- ▲ PLATED WITH .000030 MIN GOLD PER MIL-G-45204 IN THE LOCALIZED GOLD PLATE AREA, GOLD FLASH ON THE REMAINDER, OVER .000030 MIN NICKEL PER Q.Q.-N-290.
- ▲ PLATED WITH .000050 MIN 93-7% TIN-LEAD ALLOY OVER .000030 MIN NICKEL PER Q.Q.-N-290.
- 7. WIRE RANGE = 10 AWG.
- 8. INSULATION RANGE = .190-.220 DIA.

▲ PLATED TIN (NO LEAD) .000050 MIN THK PER ASTM-B-545 OVER NICKEL .000030 MIN THK PER Q.Q.-N-290.

BLACK	▲	A	2-66741-1	2-66741-0	▲
BLACK	▲	A	2-66741-1	1-66741-9	▲
BLACK	▲	A	66741-8	1-66741-2	▲
BLACK	▲	A	66741-6	1-66741-1	▲
BLACK	▲	A	OBSOLETE	1-66741-0	▲
NATURAL	▲	A	66741-2	66741-9	▲
BLACK	▲	A	66741-8	66741-7	▲
BLACK	▲	A	66741-6	66741-5	▲
BLACK	▲	A	OBSOLETE	66741-3	▲
NATURAL	▲	A	66741-2	66741-1	▲

UNLESS OTHERWISE SPECIFIED DIMENSIONS ARE IN INCHES. TOLERANCES ON:		CONTRACT NO		AMP AMP INCORPORATED Harrisburg, Pa. 17105	
DECIMALS ±.010		DR	Rick Pollock	NAME	
ANGLES ±.010		CHK		FEMALE TYPE XII CONTACT ASSEMBLY, WITH ASSIST SPRING	
MATERIAL		APPD	10-15-85	SIZE	FSCM NO
SEE CALLOUT		APPR	10-15-85	C	00779
FINISH		DSGN APPD	10-15-85	DRAWING NO	66741
SEE DASH NO		OTHER APPD		SCALE	N75
				SHEET	

CUSTOMER DRAWING