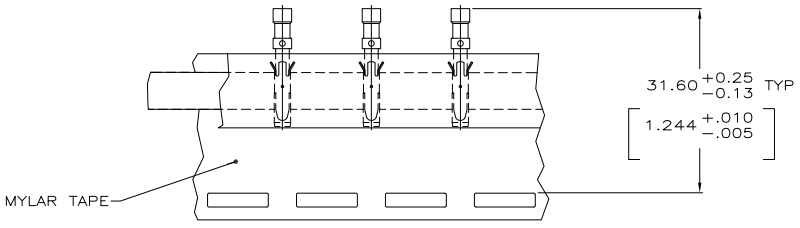
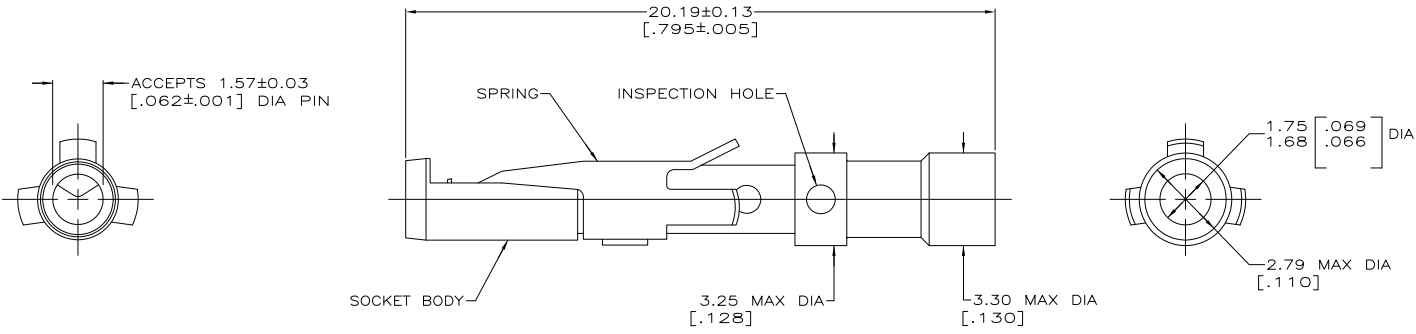


THIS DRAWING IS UNPUBLISHED. RELEASED FOR PUBLICATION .19
 © COPYRIGHT 19 BY AMP INCORPORATED. ALL INTERNATIONAL RIGHTS RESERVED.

REVISIONS										
MOD	LOC	DIST	P	F	ZONE	LTR	DESCRIPTION	DATE	APPD	
4	BD	39					E	ADDED -3 PER NPR 4680 AND REDRAWN ON CAD	04/07/93	-
							E1	REVISED PER ECO-09-020935	09SEP09	KK/AEG



TAPE MTG DETAIL
SCALE 2:1

- ⚠ 0.76µm [.000030] MIN GOLD OVER 1.27µm [.000050] MIN NICKEL.
- 2. PLATING THICKNESS TO BE MEASURED ON SURFACES ACCESSIBLE WITH 0.64 [.025] DIA SPHERE.
- ⚠ WHEN ORDERING CONTACT ASSEMBLY ON TAPE, ORDER BY THE TAPE NUMBER PLUS THE PACKAGING CODE AS FOLLOWS:
 - 1. FOR USE WITH AMP TAPETRONIC, PNEUMATIC TOOL-
 - A. 1000 PARTS TO A BOX ADD PACKAGING CODE: 1MBOX
 - 2. FOR USE WITH 4/8 INDENT STRIPPER CRIMPER-
 - A. 1000 PARTS TO A REEL ADD PACKAGING CODE: 1MREEL
 - B. 5000 PARTS TO A REEL ADD PACKAGING CODE: 5MREEL
- ⚠ OBSOLETE PARTS: OBSOLETE CIS STREAMLINING PER D.RENAUD/D.SINISI

⚠ OBSOLETE	SMALL PACK	202508-3
⚠ OBSOLETE	TAPE MTG (SEE DETAIL) ⚠	202508-2
	STANDARD	202508-1

PACKAGING TYPE		PART NO		
DO NOT SCALE PRINT. UNLESS SPECIFIED DIMENSIONS IN mm [INCHES]	DR 04/07/93 D.GELTZ	AMP Incorporated Harrisburg, PA 17105-3608 CONTACT ASSEMBLY, SOCKET, #16, 16-18 AWC, TYPE II		
TOLERANCES ON :	CHK 4-26-93 R.STONE			
2 PLC DEC ± -	APPD 4-29-93 R.S.KLINE			
3 PLC DEC ± -	APPD -			
ANGLES ± -	PRODUCT SPEC -	SIZE	CAGE CODE	DRAWING NO
MATERIAL	FINISH	Ⓢ	00779	Ⓒ-202508
SOCKET BODY: COPPER ALLOY	SOCKET BODY: ⚠	SCALE	10:1	SHEET
SPRING: STAINLESS STEEL	WEIGHT -			1 OF 1

THIS DRAWING IS A CONTROLLED DOCUMENT FOR AMP INCORPORATED. IT IS SUBJECT TO CHANGE AND THE CONTROLLING ENGINEERING ORGANIZATION SHOULD BE CONTACTED FOR THE LATEST REVISION.