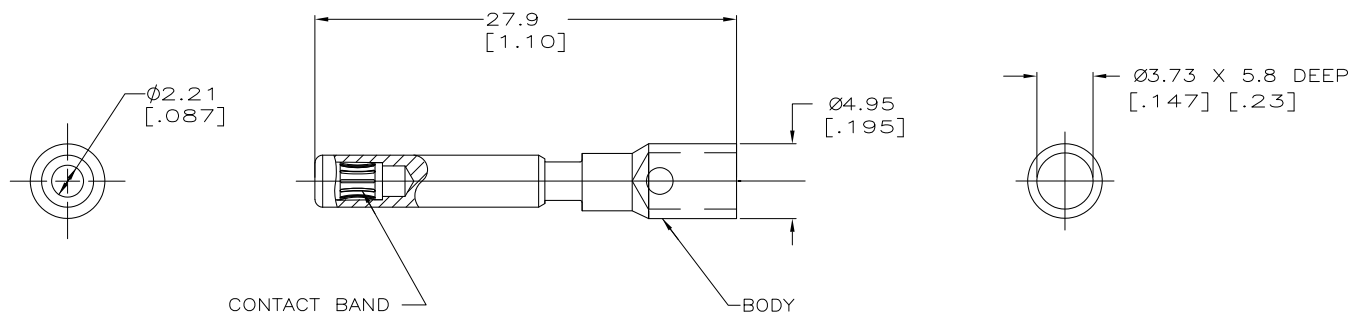


THIS DRAWING IS UNPUBLISHED. RELEASED FOR PUBLICATION
 © COPYRIGHT - By - ALL RIGHTS RESERVED.

LOC	DIST	REVISIONS			
P	LTR	DESCRIPTION	DATE	DWN	APVD
CH	11				
	C1	REVISED PER ECO-11-005027	12MAR11	RK	HMR

- 1 MATERIAL- BODY: COPPER ALLOY
BAND: BeCu
- 2 FINISH- BODY AND BAND: 5.08μM[.000200] SILVER
OVER 1.02μM[.000040] NICKEL.
- 3. WIRE BARREL WILL ACCEPT #10 AWG WIRE.
- 4. MATES WITH AMP PART NUMBER 193796-1.



193797-1
PART NO

THIS DRAWING IS A CONTROLLED DOCUMENT.		DWN 06-03-93	J.TURNER	TE Connectivity	
DIMENSIONS: mm[INCHES]		CHK ALG	11-17-93		
TOLERANCES UNLESS OTHERWISE SPECIFIED:		APVD SRS	11-17-93	NAME SOCKET ASSY, LOUVERTAC, #10 AWG, UNIVERSAL MATE-N-LOK* II	
0 PLC ± -		PRODUCT SPEC		SIZE CAGE CODE DRAWING NO	
1 PLC ± -		APPLICATION SPEC		A3 00779 C=193797	
2 PLC ± 0.5[.02]		WEIGHT		RESTRICTED TO	
3 PLC ± 0.25[.010]		CUSTOMER DRAWING		SCALE NONE SHEET 1 of 1 REV C1	
4 PLC ± -					
ANGLES ± -					
MATERIAL	FINISH				

*MATE-N-LOK IS A TRADEMARK

THIS DRAWING IS A CONTROLLED DOCUMENT FOR AMP INCORPORATED. IT IS SUBJECT TO CHANGE AND THE CONTROLLING ENGINEERING ORGANIZATION SHOULD BE CONTACTED FOR THE LATEST REVISION.