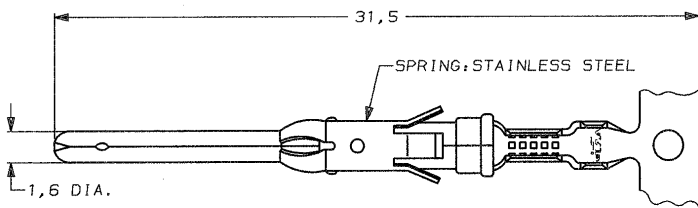


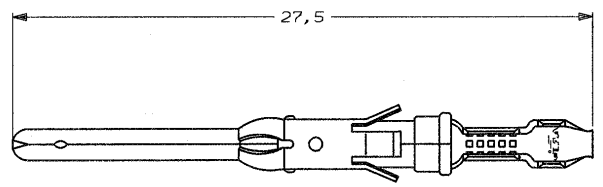
DO NOT SCALE
DIMENSIONS IN mm

METRIC

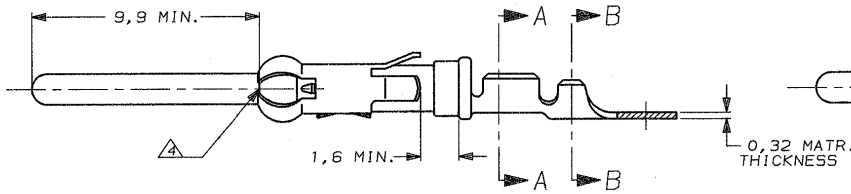
THIRD ANGLE
PROJECTION



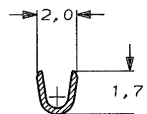
STRIP



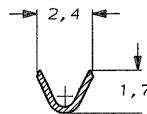
LOOSE-PIECE



COLOR CODE: RED



SECTION A-A



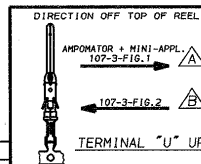
SECTION B-B

WIRE RANGE : 0,12-0,20 mm² (26-24 AWG)
INSUL. RANGE : 0,9 -1,4 mm (.035-.055)

NOTES :

- 1 U.L. RECOGNIZED UNDER FILE E28476 VOL.VI SEC.I.
- 2 FOR CRIMPDETAILS SEE AMP-SPEC. 114-19.000.
- 3 MEETS PRODUCT SPECIFICATION 108-10042.
- 4 0,40 MAX. GAP BETWEEN SPRING-NOSE AND CONTACT BODY.

OBSOLETE PARTS: OBSOLETE CIS STREAMLINING
PER D.RENAUD/D.SINISI



1-163089-3	△	1-163090-1	BRASS	EL. TIN	△	△
1-163089-2	△	1-163090-2	BRASS	BR. TIN/LEAD	△	△
1-163089-1	△		BRASS	ECON. GOLD	△	△
1-163089-0	△	1-163090-0	BRASS	ECON. GOLD	△	△
163089-9	△		BRASS	EL. TIN	△	△
163089-8	△		BRASS	SEL. GOLD	△	△
163089-2	△	163090-2	BRASS	SEL. GOLD	△	△
163089-1	△	163090-1	BRASS	EL. TIN	△	△

NOTES	MATERIAL	THICKNESS	AREA
△	TIN	2,0 μm	ALL OVER
△	NICKEL GOLD TIN/LEAD	0,8 μm	ALL OVER CONTACT AREA BARREL
△	NICKEL GOLD GOLD	0,8 μm	ALL OVER CONTACT AREA ALL OVER
△	NICKEL GOLD GOLD	1,2 μm	ALL OVER CONTACT AREA ALL OVER
△	NICKEL SILVER TIN/LEAD	2,5 μm	ALL OVER CONTACT AREA BARREL
△	SILVER	0,5 μm	ALL OVER
△	SILVER	2,5 μm	ALL OVER
△	NICKEL TIN/LEAD	1,27 μm	ALL OVER ALL OVER
△	LUBRICATED		

PARTNUMBER	DIRECTION OF REEL	LOOSE-PIECE	MATERIAL	PLATING
Y1	REVISED PER - ECO-10-000030	KK	AEG	05JAN10
Y	EBD0-0335-04	JMS	FWK	02/08/04
N	EH-0302-94	JvL	HvD	03-05-94
M	ECN H-9813	JvdH	RD	18-05-92
LTR.	REVISION RECORD	DR.	CHK.	DATE
DR. : L.V.D.HEIJDEN.	CHK. : P.V.D.HAGEN.	APP. : L.V.SOEST.		
DATE: 19-08-87	DATE: 20-08-87	DATE: 20-08-87		

CUSTOMER DRAWING FOR REFERENCE ONLY
WILL NOT BE UPDATED

© COPYRIGHT 19- BY AMP HOLLAND B.V.
ALL INTERNATIONAL RIGHTS RESERVED. AMP PRODUCTS MAY BE
COVERED BY U.S. AND FOREIGN AND/OR PATENTS PENDING.

THIS DRAWING IS UNPUBLISHED
RELEASED FOR PUBLICATION AUG, 19 87

AMP AMP HOLLAND B.V.
's-Hertogenbosch,
The Netherlands.

NAME
**PIN TYPE III CONTACT
SIZE 16**

DWG. No. C-163089

REV. LTR. Y1 SHEET 1 OF 1

8 | 7 | 6 | 5 | 4 | 3 | 2 | 1