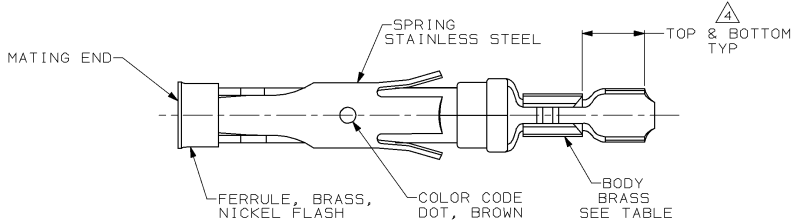
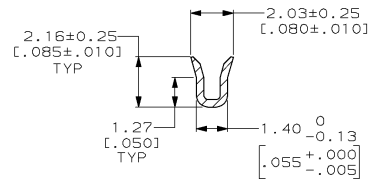
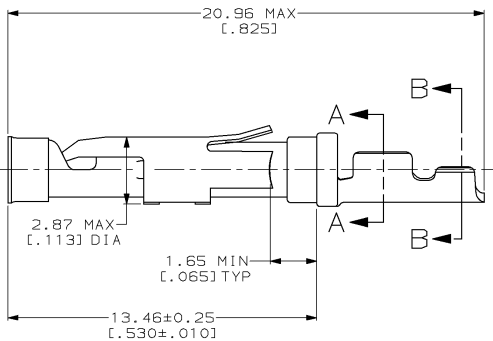


THIS DRAWING IS UNPUBLISHED. RELEASED FOR PUBLICATION
 © COPYRIGHT 19 BY AMP INCORPORATED. ALL INTERNATIONAL RIGHTS RESERVED.

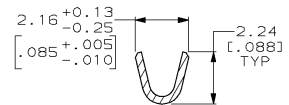
LOC	DIST	P	F	ZONE	LTR	DESCRIPTION	DATE	APPD
FT	47							
					G	REDRAWN & REV PER ECN B03869	7-30-91	-
					H	ADDED -5 PER NPR 3597 & REV PER B06295	06/04/92	GS
					J	OBS -1 PER EC 0020-1318-95	11 JUN 96	GS
					K	OBSOLETE -5 PER EC 0020-608-96	18 DEC 96	GS
					L	REV PER EC 0320-137-97	20 AUG 97	PB



1.689±0.051 DIA
[.0665±.0020]



SECTION A-A



SECTION B-B

- ⚠ 0.76µm [.000030] MIN GOLD PER MIL-G-45204 ON MATING END FOR A LENGTH OF 5.08 [.200] MIN WITH GOLD FLASH ON THE REMAINDER OVER 0.76µm [.000030] MIN NICKEL PER QQ-N-290.
- ⚠ 0.76µm [.000030] MIN GOLD PER MIL-G-45204 ON MATING END FOR A LENGTH OF 5.08 [.200] MIN WITH A UNIFORM GRADIENT TO 0.25µm [.000010] MIN GOLD PER MIL-G-45204 ON THE REMAINDER OVER 0.76µm [.000030] MIN NICKEL PER QQ-N-290.
- ⚠ 0.38µm [.000015] MIN GOLD PER MIL-G-45204 ON MATING END FOR A LENGTH OF 5.08 [.200] MIN WITH GOLD FLASH ON THE REMAINDER OVER 0.76µm [.000030] MIN NICKEL PER QQ-N-290.
- ⚠ GOLD PLATING NEED NOT APPEAR IN THIS AREA.
- 5. WIRE RANGE 26-30 AWG. INSULATION RANGE 1.02[.040]-1.52[.060].
- ⚠ 0.38µm [.000015] MIN GOLD PER MIL-G-45204 ON MATING END FOR A LENGTH OF 5.08 [.200] MIN, 1.27µm [.000050] MIN TIN-LEAD PER MIL-T-10727 FOR A LENGTH OF 5.69 [.224] MIN ON OPPOSITE END, BOTH OVER 1.27µm [.000050] MIN NICKEL PER QQ-N-290 ON ENTIRE CONTACT.

OBSOLETE	⚠	1-66424-0	66428-5
	⚠	66424-8	66428-4
	⚠	66424-3	66428-3
OBSOLETE	⚠	66424-1	66428-1

DO NOT SCALE PRINT. UNLESS SPECIFIED DIMENSIONS IN mm [INCHES] TOLERANCES ON: 2 PLC DEC ± 0.13(.005) 3 PLC DEC ± ANGLES ±	DR 7-30-91 R. SHIREY CHK 9-19-91 R. STONE APPD 9-20-91 J. WESTMAN APPD 9-23-91 W. PARKER	AMP AMP Incorporated Harrisburg, PA 17105-3608	
MATERIAL SEE CALLOUTS	PRODUCT SPEC -	NAME SOCKET ASSEMBLY, LOOSE PIECE, TYPE III+	
FINISH SEE CALLOUTS	APPLICATION SPEC -	SIZE C 00779	DRAWING NO 66428
WEIGHT -		SCALE 8:1	SHEET 1 OF 1

CUSTOMER DRAWING

66428

A