

4

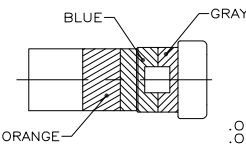
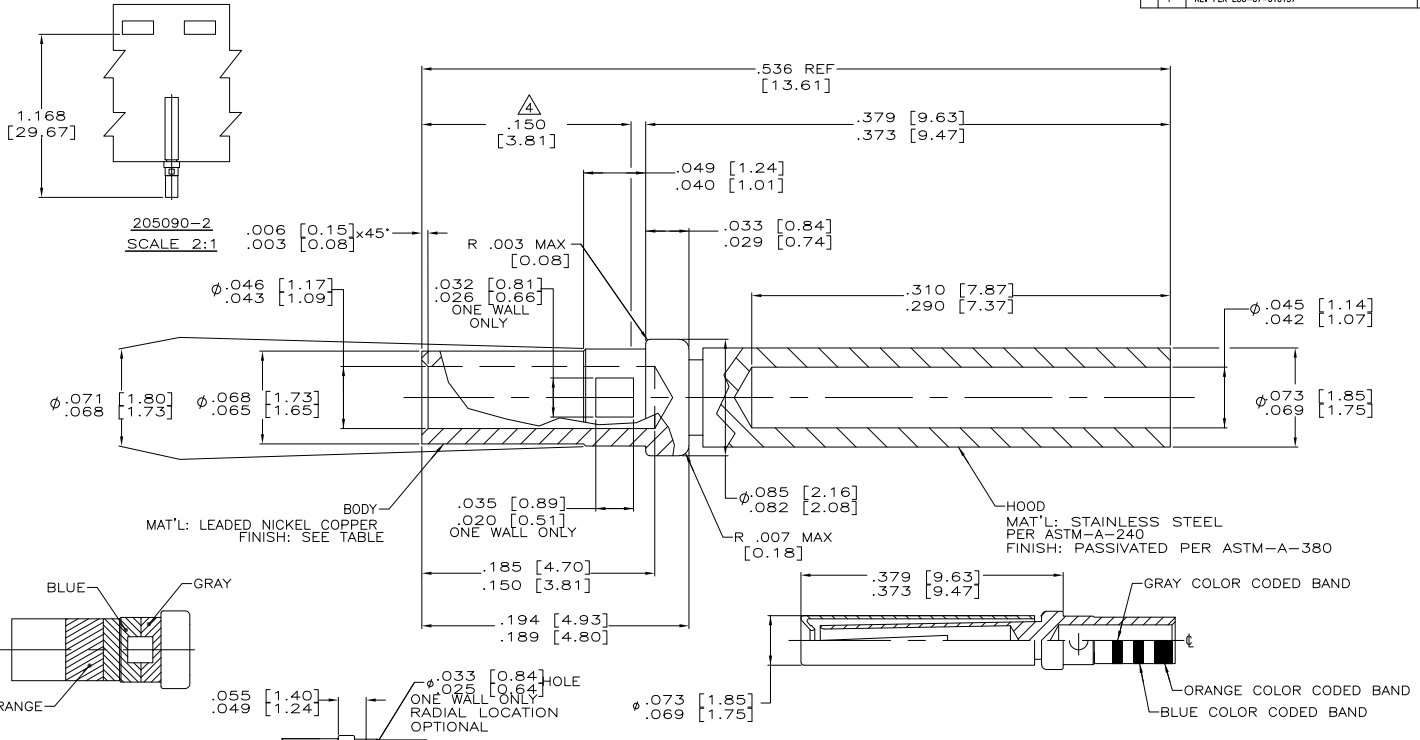
3

2

1

THIS DRAWING IS UNPUBLISHED. RELEASED FOR PUBLICATION
 © COPYRIGHT BY TYCO ELECTRONICS CORPORATION. ALL RIGHTS RESERVED.

LOC	DIST	REVISIONS					
DF	DO	P	LTR	DESCRIPTION	DATE	MIN	APD
		P		REV PER ECO-07-010137	23MAY07	PY	ND



COLOR CODE
 BIN NO. 368
 SCALE 10:1

ALTERNATE CONFIGURATION

- ALL DIMENSIONS APPLY AFTER PLATING.
- THIS DRAWING COMPLIES WITH SPECIFICATION MIL-C-39029/63 AND M24308/10-1.
- ALL DIAMETERS CONCENTRIC WITH EACH OTHER WITHIN .004 T.I.R.
- POINT OF PLATING MEASUREMENT .150 [3.81] FROM WIRE BARREL END OF CONTACT.
- ALL SURFACES HAVE $\sqrt{63}$ OR BETTER FINISH.
- GOLD PLATED PER ASTM-B-488 TYPE 3, GRADE C, CLASS 1.25 OVER NICKEL PER QQ-N-290.
- GOLD PLATED PER ASTM-B-488 TYPE 3, GRADE C, CLASS .75 OVER NICKEL PER QQ-N-290.
- SLEEVE MAY BE CRIMPED, DIMPLED OR PRESS FIT TO BODY

SUPERSEDED BY 1218267-3	NO	Δ	LOOSE PIECE	205090-7
	YES	Δ	TAPE MOUNTED	205090-2
	YES	Δ	LOOSE PIECE	205090-1
	COLOR CODE	FINISH	DESCRIPTION	PART NUMBER

THIS DRAWING IS A CONTROLLED DOCUMENT.		DR C. THOMAS 8-17-04	Tyco Electronics Corporation Harrisburg, PA 17105-3608	
DIMENSIONS: INCHES		CHK D. MILLER 8-17-04	NAME CONTACT ASSY, SOCKET, SIZE 20, AMPLIMITE	
MATERIAL SEE CALLOUTS		FINISH SEE CALLOUTS	SIZE CASE CODE DRAWING NO. A2 00779 C-205090	RESTRICTED TO
		CUSTOMER DRAWING	SCALE 20:1	SHEET 1 of 1 REV P

AMP 1471-9 REV 31MM2000

205090-1

A