

4

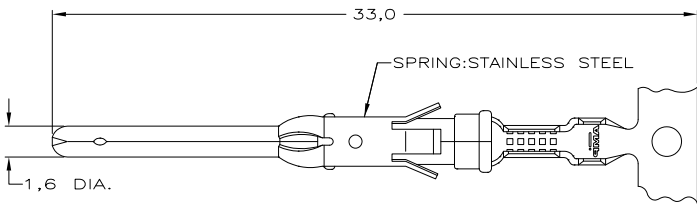
3

2

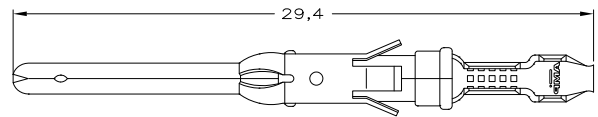
1

THIS DRAWING IS UNPUBLISHED. RELEASED FOR PUBLICATION JAN. 1991.
 © COPYRIGHT 1991 BY TYCO ELECTRONICS CORPORATION. ALL RIGHTS RESERVED.

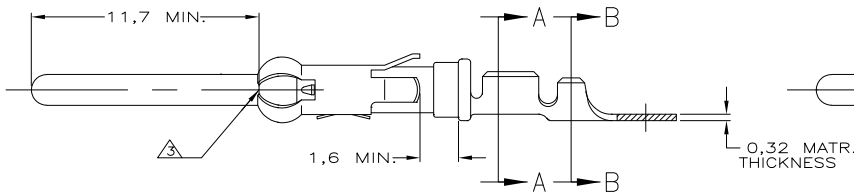
LOC	DIST	REVISIONS			
P	LTR	DESCRIPTION	DATE	DWN	APVD
G		EBDO-0462-04	08DEC04	RS	MG
G1		REVISED PER ECO-09-020689	22AUG09	KK	AEG



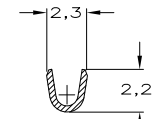
STRIP



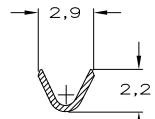
LOOSE-PIECE



COLOR CODE: YELLOW



SECTION A-A

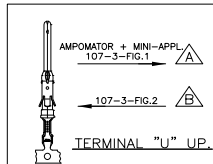


SECTION B-B

WIRE RANGE : 0,20-0,50 mm² (24-20 AWG)
 INSUL. RANGE : 1,1 -1,8 mm (.045-.070)

NOTES :

- 1 FOR CRIMPDETAILS SEE AMP-SPEC. 114-19.000 .
- 2 MEETS PRODUCTSPECIFICATION 108-10042.
- △ 0,40 MAX. GAP BETWEEN SPRING-NOSE AND CONTACT BODY.
- △ OBSOLETE PARTS: OBSOLETE CIS STREAMLINING PER D.RENAUD/D.SINISI



PARTNUMBER	DIRECTION OF REEL	LOOSE-PIECE	MATERIAL	PLATING
164160-8	△		164163-8	PHBR EL.TIN
164160-7	△			BRASS ECON.GOLD
164160-6	△		164163-4	BRASS ECON.GOLD
164160-4	△			BRASS SEL.GOLD
164160-3	△			BRASS EL.TIN
164160-2	△		164163-2	BRASS SEL.GOLD
164160-1	△		164163-1	BRASS EL.TIN

NOTES	MATERIAL	THICKNESS	AREA
△	TIN	2,0 μm	ALL OVER
△	NICKEL GOLD TIN	0,8 μm	ALL OVER CONTACT AREA BARREL
△	NICKEL GOLD GOLD	0,8 μm	ALL OVER CONTACT AREA
△	NICKEL GOLD GOLD	1,2 μm	ALL OVER CONTACT AREA
△	NICKEL SILVER TIN	2,5 μm	ALL OVER CONTACT AREA BARREL
△	SILVER	0,5 μm	ALL OVER
△	SILVER	2,5 μm	ALL OVER

THIS DRAWING IS A CONTROLLED DOCUMENT.

DIMENSIONS:	TOLERANCES UNLESS OTHERWISE SPECIFIED:
mm	0 PLC ± -
	1 PLC ± -
	2 PLC ± -
	3 PLC ± -
	4 PLC ± -
	ANGLES ± -
MATERIAL	FINISH

19.08.1987

DWN L.V.D.HEYDEN
 CHK P.V.D.HAGEN
 APVD - NAME

Tyco Electronics Tyco Electronics Corporation
 Bideford, UK, EX39 4HE

PIN TYPE III CONTACT
 SIZE 16 (LONG PIN)

SIZE A3 CAGE CODE 00779 DRAWING NO C-164160 RESTRICTED TO -

WEIGHT -

CUSTOMER DRAWING SCALE - SHEET 1 OF 1 REV G1