

4

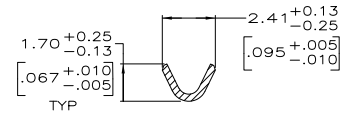
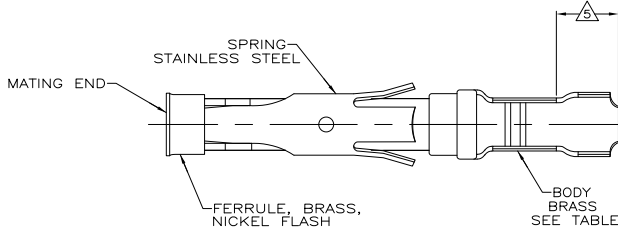
3

2

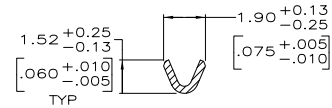
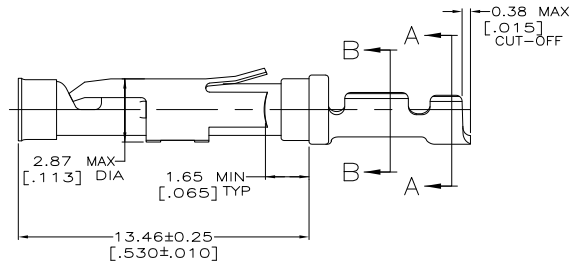
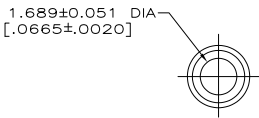
1

THIS DRAWING IS UNPUBLISHED. RELEASED FOR PUBLICATION. ALL RIGHTS RESERVED.

LOC	DIST	REVISIONS			
P	LTR	DESCRIPTION	DATE	BY	APP'D
	D2	REVISED PER ECO-11-004820	11MAR11	RK	HMR



SECTION A-A



SECTION B-B

- △ 0.76µm [.000030] MIN GOLD PER MIL-G-45204 ON MATING END FOR A LENGTH OF 5.08 [.200] MIN WITH GOLD FLASH ON THE REMAINDER OVER 0.76µm [.000030] MIN NICKEL PER QQ-N-290.
- △ 1.27µm [.000050] MIN TIN-LEAD PER MIL-T-10727 OVER 0.76µm [.000030] MIN NICKEL PER QQ-N-290.
- △ 0.76µm [.000030] MIN GOLD PER MIL-G-45204 ON MATING END FOR A LENGTH OF 5.08 [.200] MIN WITH A UNIFORM GRADIENT TO 0.25µm [.000010] MIN GOLD PER MIL-G-45204 ON THE REMAINDER OVER 0.76µm [.000030] MIN NICKEL PER QQ-N-290.
- △ 0.38µm [.000015] MIN GOLD PER MIL-G-45204 ON MATING END FOR A LENGTH OF 5.08 [.200] MIN WITH GOLD FLASH ON THE REMAINDER OVER 0.76µm [.000030] MIN NICKEL PER QQ-N-290.
- △ GOLD PLATING NOT REQUIRED IN THIS AREA.
- 6. WIRE RANGE 26-24 AWC.  
INSULATION RANGE 0.89[.035]-1.40[.055].
- △ 0.38µm [.000015] MIN GOLD PER MIL-G-45204 ON MATING END FOR A LENGTH OF 5.08 [.200] MIN, 1.27µm [.000050] MIN TIN-LEAD PER MIL-T-10727 FOR A LENGTH OF 5.69 [.224] MIN ON OPPOSITE END, BOTH OVER 1.27µm [.000050] MIN NICKEL PER QQ-N-290 ON ENTIRE CONTACT.
- △ 1.27µm [.000050] MIN TIN PER MIL-T-10727 OVER 0.76µm [.000030] MIN NICKEL PER QQ-N-290.
- △ OBSOLETE PARTS: OBSOLETE CIS STREAMLINING PER D.RENAUD/D.SINISI

	SMALL PACK	△	1-66108-7	1-66109-8
	STANDARD	△	66108-2	1-66109-7
	SMALL PACK	△	66108-4	1-66109-6
	SMALL PACK	△	66108-2	1-66109-5
△ OBSOLETE	SMALL PACK	△	66108-1	<del>1-66109-4</del>
△ OBSOLETE	STANDARD	△	1-66108-4	1-66109-3
	STANDARD	△	66108-4	66109-4
	STANDARD	△	66108-3	66109-3
	STANDARD	△	66108-2	66109-2
	STANDARD	△	66108-1	66109-1
	PACKAGING TYPE	BODY FINISH	STRIP P/N REF	PART NO

THIS DRAWING IS A CONTROLLED DOCUMENT. DWG NO: 04/02/92

DESIGNED BY: W. LENKER 6-11-92

CHECKED BY: G. STEINHAUER 7-8-92

DATE: 04/02/92

NAME: W. LENKER

PRODUCT SPEC: --

APPLICATION SPEC: --

WEIGHT: --

SIZE: A2

CAGE CODE: 00779

DRAWING NO: 66109

RESTRICTED TO: --

MATERIAL: SEE CALLOUTS

FINISH: SEE CALLOUTS

CUSTOMER DRAWING

SCALE: 8:1

SHEET: 1 of 1

REV: D2