

4

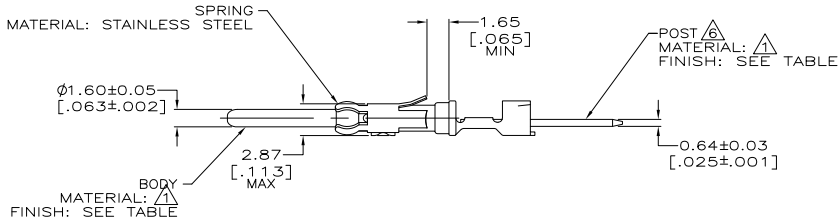
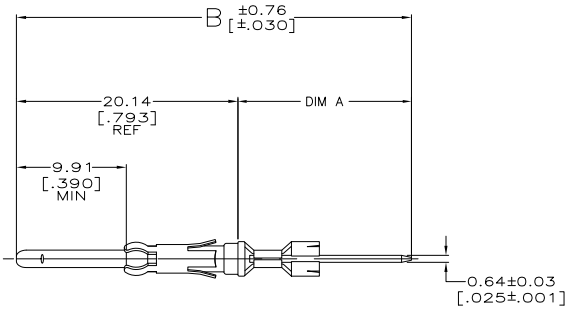
3

2

1

THIS DRAWING IS UNPUBLISHED. RELEASED FOR PUBLICATION. ALL RIGHTS RESERVED.

LOC	DIST	REVISIONS					
FT	0	P	LTR	DESCRIPTION	DATE	MIN	APD
		AS1		REVISED PER ECO-11-004587	11MAR11	RK	HMR



- △ BRASS PER ASTM B-36.
- △ 2.54µm [.000100] MIN TIN-LEAD OVER 1.27µm [.000050] MIN NICKEL.
- △ 0.76µm [.000030] MIN PRECIOUS METAL PLATING CONFORMS TO THE REQUIREMENTS OF TE PRODUCT SPEC 108-10042, BASED ON EIA/ECA-364-1000.01 ( CONTROLLED ENVIRONMENT APPLICATIONS ), OVER 1.27µm [.000050] MIN NICKEL.
- △ 0.76µm [.000030] MIN PRECIOUS METAL PLATE ON MATING END FOR A LENGTH OF 5.08 [.200] MIN OVER 1.27µm [.000050] MIN NICKEL PLATE. GOLD FLASH ALL OVER. CONFORMS TO THE REQUIREMENTS OF TE CONNECTIVITY PRODUCT SPEC 108-10042, BASED ON EIA/ECA-364-1000.01A ( CONTROLLED ENVIRONMENT APPLICATIONS ).
- △ SELECTIVELY PLATED 0.51µm [.000020] MIN GOLD, FOR A DISTANCE OF 5.08 [.200] FROM MATING END, GOLD FLASH ON REMAINDER, ALL OVER 0.76µm [.000030] MIN NICKEL.
- △ POST WILL ACCEPT (SEE TABLE) TERMINATIONS.
- △ POST PLATING .000100 MIN TIN OVER .000050 MIN NICKEL.
- △ .0001000 TIN OVER .000050 NICKEL.

FINISH	BODY FINISH	NO OF TERM	B	A	PART NUMBER
△	△	3	46.08 [1.814]	25.91 [1.020]	6-66460-6
△	△	1	35.97 [1.416]	15.80 [.622]	6-66460-5
△	△	3	46.08 [1.814]	25.91 [1.020]	6-66460-4
△	△	2	41.28 [1.625]	21.11 [.831]	6-66460-3
△	△	1	35.97 [1.416]	15.80 [.622]	6-66460-2
△	△	SPECIAL	33.40 [1.315]	13.23 [.521]	6-66460-1
△	△	SPECIAL	65.61 [2.583]	45.44 [1.789]	5-66460-0
△	△	SPECIAL	57.73 [2.273]	37.57 [1.479]	4-66460-9
△	△	SPECIAL	49.86 [1.963]	29.69 [1.169]	4-66460-8
△	△	SPECIAL	68.60 [2.701]	48.44 [1.907]	3-66460-0
△	△	SPECIAL	59.71 [2.351]	39.55 [1.557]	2-66460-9
△	△	SPECIAL	50.82 [2.001]	30.66 [1.207]	2-66460-8
△	△	1	34.80 [1.370]	14.63 [.576]	2-66460-1
△	△	-	34.77 [1.369]	14.63 [.576]	2-66460-0
△	△	SPECIAL	52.78 [2.078]	32.61 [1.284]	1-66460-9
△	△	2	41.28 [1.625]	21.11 [.831]	1-66460-8
△	△	2	41.28 [1.625]	21.11 [.831]	1-66460-1
△	△	SPECIAL	33.40 [1.315]	13.23 [.521]	1-66460-0
△	△	3	46.08 [1.814]	25.91 [1.020]	66460-9
△	△	2	41.28 [1.625]	21.11 [.831]	66460-8
△	△	1	35.97 [1.416]	15.80 [.622]	66460-7
△	△	3	46.08 [1.814]	25.91 [1.020]	66460-6
△	△	2	41.28 [1.625]	21.11 [.831]	66460-5
△	△	1	35.97 [1.416]	15.80 [.622]	66460-4
△	△	3	46.08 [1.814]	25.91 [1.020]	66460-3
△	△	2	41.28 [1.625]	21.11 [.831]	66460-2
△	△	1	35.97 [1.416]	15.80 [.622]	66460-1

SUPERSEDED BY 66460-8

OBSOLETE

THIS DRAWING IS A CONTROLLED DOCUMENT.

DIMENSIONS: MM [ INCHES ]	DESIGNED BY: C. REIFENSYDER	DATE: 08 JUN 96	TE Connectivity
OTHER APPROVED DIMENSIONS: 0 PLC # - 1 PLC # - 2 PLC # 0.25 (10) 3 PLC # - 4 PLC # -	CHECKED BY: G.A. STEINHAUER	DATE: 23 JUL 96	
MATERIAL: SEE CALLOUTS	APPLICATION SPEC: -	SIZE: A2	DATE CODE (DRAWING NO): 00779
FINISH: SEE CALLOUTS	WEIGHT: -	SCALE: 4:1	SHEET: 1 of 2
			REV: AS1

PIN CONTACT, CRIMPED, .062, .025 X .025 POSST, M SERIES

66460

A

D

C

B

A

4

3

2

1

THIS DRAWING IS UNPUBLISHED. RELEASED FOR PUBLICATION  
 © COPYRIGHT - By - ALL RIGHTS RESERVED.

LOC	DIST	REVISIONS			
FT	0	REV	DESCRIPTION	DATE	BY
-	-	1	SEE SHEET 1	-	-

		SPECIAL	33.40 [1.315]	13.23 [.521]	6-66460-8
		2	41.28 [1.625]	21.11 [.831]	6-66460-7
POST FINISH	BODY FINISH	NO OF TERM	B	A	PART NUMBER

THIS DRAWING IS A CONTROLLED DOCUMENT.

DRN	C. REISNYDER	08 JUN 98
CHK	R. STONE	27 JUN 98
APPD	G. A. STEINHAUER	23 JUL 98
NAME	TE Connectivity	
DESCRIPTION	PIN CONTACT, CRIMPED, .062, .025 X .025 POSST, M SERIES	
APPLICATION SPEC	SIZE	CAGE CODE DRAWING NO
WEIGHT	A2	00779 C-66460
MATERIAL	CUSTOMER DRAWING	
FINISH	SCALE	4:1
SEE CALLOUTS	SHEET	2 of 2
SEE CALLOUTS	REV	AS1

1471-9 (3/11)

66460

A