

4

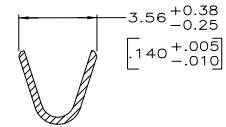
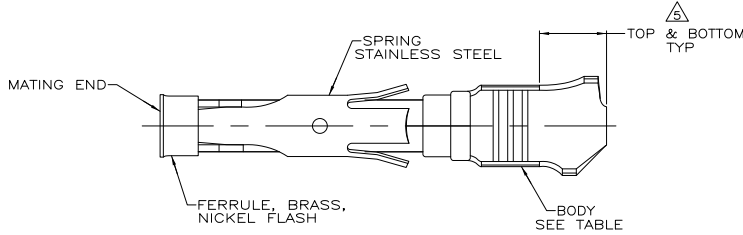
3

2

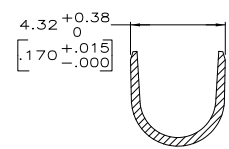
1

THIS DRAWING IS UNPUBLISHED. RELEASED FOR PUBLICATION
 © COPYRIGHT - By - ALL RIGHTS RESERVED.

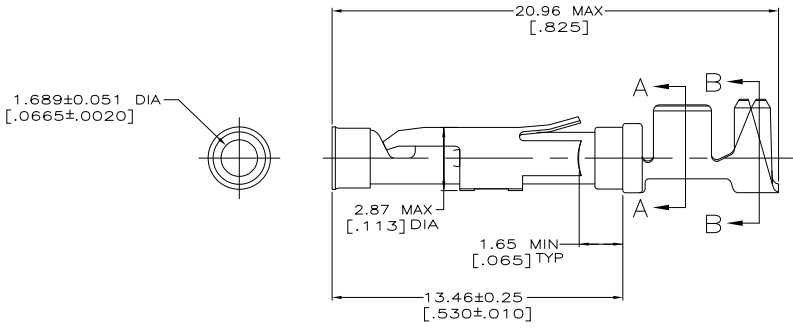
LOC	DIST	REVISIONS					
FT	0	P	LTR	DESCRIPTION	DATE	BY	APPD
		U1		REVISED PER ECO-11-004820	11MAR11	RK	HMR



SECTION A-A



SECTION B-B



- 1. 0.76µm [.000030] MIN GOLD PER MIL-G-45204 ON MATING END FOR A LENGTH OF 5.08 [.200] MIN WITH GOLD FLASH ON THE REMAINDER OVER 0.76µm [.000030] MIN NICKEL PER QQ-N-290.
- 2. 1.27µm [.000050] MIN TIN-LEAD PER MIL-T-10727 OVER 0.76µm [.000030] MIN NICKEL PER QQ-N-290.
- 3. BRASS PER MIL-C-50.
- 4. PHOSPHOR BRONZE PER QQ-P-750.
- 5. GOLD PLATING NEED NOT APPEAR IN THIS AREA.
- 6. WIRE RANGE 14-18 AWG.
- INSULATION RANGE 2.79[.110]-3.81[.150].
- 7. 0.38µm [.000015] MIN GOLD PER MIL-G-45204 ON MATING END FOR A LENGTH OF 5.08 [.200] MIN, 1.27µm [.000050] MIN TIN-LEAD PER MIL-T-10727 FOR A LENGTH OF 5.69 [.224] MIN ON OPPOSITE END, BOTH OVER 1.27µm [.000050] MIN NICKEL PER QQ-N-290 ON ENTIRE CONTACT.
- 8. 1.27µm [.000050] MIN TIN PER MIL-T-10727 OVER 0.76µm [.000030] MIN NICKEL PER QQ-N-290.
- 9. CU-NI ALLOY

	△	△	66598-9	1-66601-3
SMALL PACK	△	△		
STANDARD	△	△	1-66598-2	1-66601-2
STANDARD	△	△	1-66598-1	1-66601-0
STANDARD	△	△	66598-9	66601-9
SMALL PACK	△	△	66598-2	66601-8
SMALL PACK	△	△	66598-1	66601-7
OBSOLETE	△	△	66598-8	66601-5
OBSOLETE	△	△	66598-6	66601-4
OBSOLETE	△	△	66598-5	66601-3
STANDARD	△	△	66598-2	66601-2
STANDARD	△	△	66598-1	66601-1
PACKAGING	△	△		
	△	△	STRIP P/N	PART NO.

THIS DRAWING IS A CONTROLLED DOCUMENT. 7-31-91

DESIGNED BY: R. SHIBBY
 CHECKED BY: S. STONE
 APPROVED BY: J. WESTMAN
 DATE: 9-20-91

TE Connectivity
 SOCKET ASSEMBLY, LOOSE PIECE, TYPE III+

SIZE: A2
 CASE CODE: 00779
 DRAWING NO: 66601

MATERIAL: SEE CALLOUTS
 FINISH: SEE CALLOUTS

CUSTOMER DRAWING
 SCALE: 8:1
 SHEET: 1 of 1
 REV: U1