

4

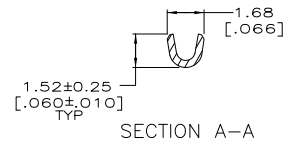
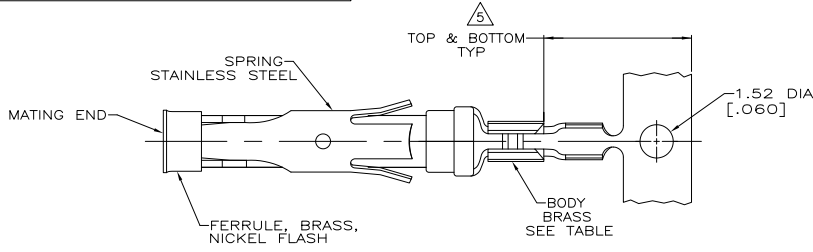
3

2

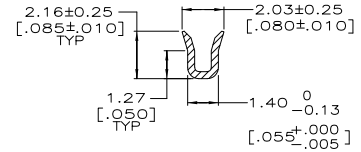
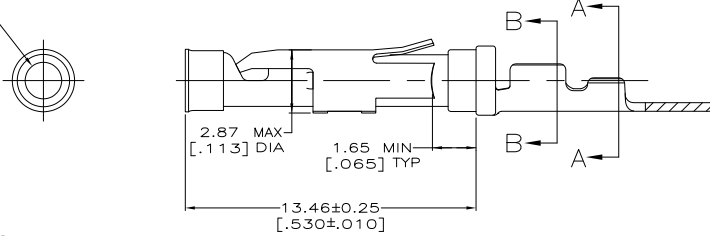
1

THIS DRAWING IS UNPUBLISHED. RELEASED FOR PUBLICATION. COPYRIGHT BY TYCO ELECTRONICS CORPORATION. ALL INTERNATIONAL RIGHTS RESERVED.

LOC	DIST	REVISIONS					
FT	0	P	LTR	DESCRIPTION	DATE	MIN	APPD
		V1		REVISED PER ECO-08-018146	28JUL08	HMR	GS
		V2		REVISED PER ECO-09-021826	28AUG09	KK	AEG



1.689±0.051 DIA [0.0665±0.0020]



- 1 0.76µm [0.00030] MIN GOLD PER MIL-G-45204 ON MATING END FOR A LENGTH OF 5.08 [.200] MIN WITH GOLD FLASH ON THE REMAINDER OVER 0.76µm [0.00030] MIN NICKEL PER QQ-N-290.
- 2 0.76µm [0.00030] MIN GOLD PER MIL-G-45204 ON MATING END FOR A LENGTH OF 5.08 [.200] MIN WITH A UNIFORM GRADIENT TO 0.25µm [0.00010] MIN GOLD PER MIL-G-45204 ON THE REMAINDER OVER 0.76µm [0.00030] MIN NICKEL PER QQ-N-290.
- 3 0.38µm [0.00015] MIN GOLD PER MIL-G-45204 ON MATING END FOR A LENGTH OF 5.08 [.200] MIN WITH GOLD FLASH ON THE REMAINDER OVER 0.76µm [0.00030] MIN NICKEL PER QQ-N-290.
- 4 1.27µm [0.00050] MIN GOLD PER MIL-G-45204 ON MATING END FOR A LENGTH OF 5.08 [.200] MIN WITH GOLD FLASH ON REMAINDER OVER 1.90µm [0.00075] MIN NICKEL PER QQ-N-290.
- 5 GOLD PLATING NEED NOT APPEAR IN THIS AREA EXCEPT 1-66394-2 HAS GOLD PLATING ON INSULATION BARREL.
- 6 REVERSE REELED FOR MINI-APPLICATOR.
- 7 WIRE RANGE 26-30 AWG. INSULATION RANGE 0.36[.014]-0.76[.030].
- 8 0.38µm [0.00015] MIN GOLD PER MIL-G-45204 ON MATING END FOR A LENGTH OF 5.08 [.200] MIN, 1.27µm [0.00050] MIN TIN-LEAD PER MIL-T-10727 FOR A LENGTH OF 5.69 [.224] MIN ON OPPOSITE END, BOTH OVER 1.27µm [0.00050] MIN NICKEL PER QQ-N-290 ON ENTIRE CONTACT.
- 9 0.38µm [0.00015] MIN GOLD PER MIL-G-45204 ON MATING END FOR A LENGTH OF 5.08 [.200] MIN, 1.27µm [0.00050] MIN TIN PER MIL-T-10727 FOR A LENGTH OF 5.69 [.224] MIN ON OPPOSITE END, BOTH OVER 1.27µm [0.00050] MIN NICKEL PER QQ-N-290 ON ENTIRE CONTACT.
- 10 OBSOLETE PARTS: OBSOLETE CIS STREAMLINING PER D.RENAUD/D.SINISI
- 11 OBSOLETE

SUPERSEDED BY 66394-7	△	△	-	1-66394-5
SUPERSEDED BY 66394-7	△	△	△ 66405-8	1-66394-4
OBSOLETE	△	△	-	1-66394-2
	△	△	66405-4	66394-8
	△	△	-	66394-7
	△	△	66405-1	66394-5
STANDARD	△	△	66405-4	66394-4
STANDARD	△	△	66405-1	66394-1
REELING			LOOSE PIECE	PART NO.

THIS DRAWING IS A CONTROLLED DOCUMENT. R. SHIBEY 08/06/91  
 G. STONE 9-19-91  
 Tyco Electronics Corporation  
 Harrisburg, PA 17105-3608

SOCKET ASSEMBLY, .062, TYPE III+

SIZE CASE CODE DRAWING NO. RESTRICTED TO  
 A2 00779 C=66394

CUSTOMER DRAWING SCALE 8:1 SHEET 1 of 1 REV V2

1471-9 (1/08)

66394

A