

4

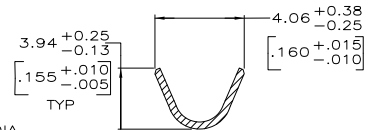
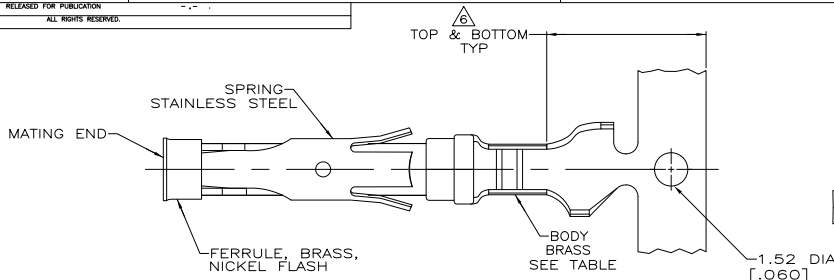
3

2

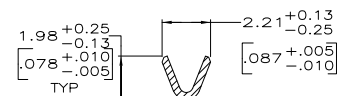
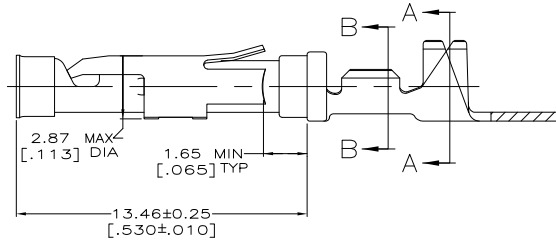
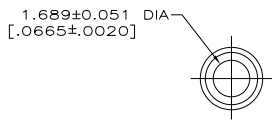
1

THIS DRAWING IS UNPUBLISHED. RELEASED FOR PUBLICATION. ALL RIGHTS RESERVED.

LOC	DIST	REVISIONS		DATE	BY	APP'D
FT	47	P	LTR			
		R1	REVISED PER ECO-11-004917	11MAR11	RK	HMR



SECTION A-A



SECTION B-B

- △ 0.76µm [.000030] MIN GOLD PER MIL-G-45204 ON MATING END FOR A LENGTH OF 5.08 [.200] MIN WITH GOLD FLASH ON THE REMAINDER OVER 0.76µm [.000030] MIN NICKEL PER QQ-N-290.
- △ 1.27µm [.000050] MIN TIN-LEAD PER MIL-T-10727 OVER 0.76µm [.000030] MIN NICKEL PER QQ-N-290.
- △ 0.76µm [.000030] MIN GOLD PER MIL-G-45204 ON MATING END FOR A LENGTH OF 5.08 [.200] MIN WITH A UNIFORM GRADIENT TO 0.25µm [.000010] MIN GOLD PER MIL-G-45204 ON THE REMAINDER OVER 0.76µm [.000030] MIN NICKEL PER QQ-N-290.
- △ 0.38µm [.000015] MIN GOLD PER MIL-G-45204 ON MATING END FOR A LENGTH OF 5.08 [.200] MIN WITH GOLD FLASH ON THE REMAINDER OVER 0.76µm [.000030] MIN NICKEL PER QQ-N-290.
- △ 1.27µm [.000050] MIN GOLD PER MIL-G-45204 ON MATING END FOR A LENGTH OF 5.08 [.200] MIN WITH GOLD FLASH ON REMAINDER OVER 3.81µm [.000150] MIN NICKEL PER QQ-N-290.
- △ GOLD PLATING NEED NOT APPEAR IN THIS AREA.
- △ REVERSE REELED FOR MINI-APPLICATOR.
- 8. WIRE RANGE 24-20 AWG.
- INSULATION RANGE 1.52 [.060]-3.05 [.120].
- △ 0.38µm [.000015] MIN GOLD PER MIL-G-45204 ON MATING END FOR A LENGTH OF 5.08 [.200] MIN, 1.27µm [.000050] MIN TIN-LEAD PER MIL-T-10727 FOR A LENGTH OF 5.69 [.224] MIN ON OPPOSITE END, BOTH OVER 1.27µm [.000050] MIN NICKEL PER QQ-N-290 ON ENTIRE CONTACT.
- △ 1.27µm [.000050] MIN TIN PER MIL-T-10727 OVER 0.76µm [.000030] MIN NICKEL PER QQ-N-290.
- △ 1.27µm [.000050] MIN TIN PER MIL-T-10727 OVER 0.76µm [.000030] MIN NICKEL PER QQ-N-290.

	66565-7	△	△	△	1-66563-1
OBSOLETE	66565-5	△	△	△	1-66563-0
OBSOLETE	-	△	△	△	66563-9
	66565-4	△	△	△	66563-8
OBSOLETE	66565-3	△	△	△	66563-7
	66565-2	△	△	△	66563-6
	66565-1	△	△	△	66563-5
	66565-4	STANDARD	△	△	66563-4
	66565-1	STANDARD	△	△	66563-1
		LOOSE PIECE REF		BODY FINISH	PART NO

THIS DRAWING IS A CONTROLLED DOCUMENT.

INCHES

OTHER DIMENSIONS UNLESS OTHERWISE SPECIFIED

0 PLG ± -

1 PLG ± -

2 PLG ± -

3 PLG ± 0.13 (.005)

4 PLG ± -

ANGLES ± -

MATERIAL SEE CALLOUTS

FINISH SEE CALLOUTS

APPLICATOR: R. SHIBBY (8-7-91), S. STONE (9-19-91), J. WESTMAN (9-20-91)

PRODUCT SPEC: -

APPLICATION SPEC: -

WEIGHT: -

SIZE: A2

CAGE CODE: 00779

DRAWING NO: C-66563

RESTRICTED TO: -

CUSTOMER DRAWING

SCALE: 8:1

SHEET: 1 of 1

REV: R1

TE Connectivity

SOCKET ASSEMBLY, .062, TYPE III+