

4

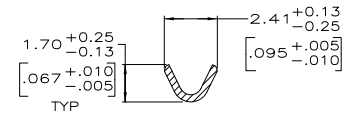
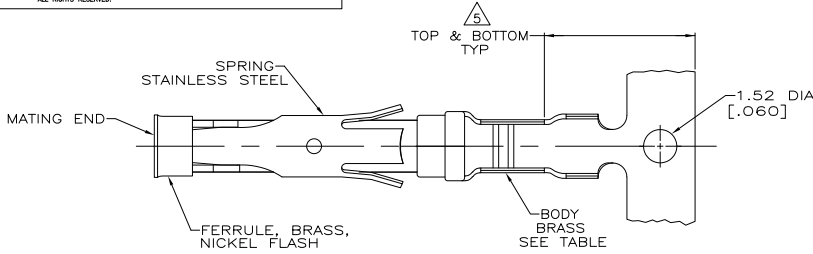
3

2

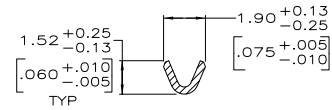
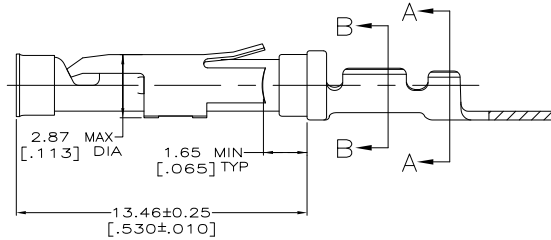
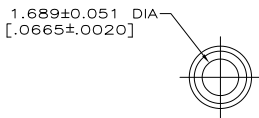
1

THIS DRAWING IS UNPUBLISHED. RELEASED FOR PUBLICATION. ALL RIGHTS RESERVED.

LOC	DIST	REVISIONS				
FT	0	P	LTR	DATE	MIN	APD
		AG3	REVISED PER ECO-11-004820	11MAR11	RK	HMR



SECTION A-A



SECTION B-B

- △ 0.76µm [.000030] MIN GOLD PER MIL-G-45204 ON MATING END FOR A LENGTH OF 5.08 [.200] MIN WITH GOLD FLASH ON THE REMAINDER OVER 0.76µm [.000030] MIN NICKEL PER QQ-N-290.
- △ 1.27µm [.000050] MIN TIN-LEAD PER MIL-T-10727 OVER 0.76µm [.000030] MIN NICKEL PER QQ-N-290.
- △ 0.76µm [.000030] MIN GOLD PER MIL-G-45204 ON MATING END FOR A LENGTH OF 5.08 [.200] MIN WITH A UNIFORM GRADIENT TO 0.25µm [.000010] MIN GOLD PER MIL-G-45204 ON THE REMAINDER OVER 0.76µm [.000030] MIN NICKEL PER QQ-N-290.
- △ 0.38µm [.000015] MIN GOLD PER MIL-G-45204 ON MATING END FOR A LENGTH OF 5.08 [.200] MIN WITH GOLD FLASH ON THE REMAINDER OVER 0.76µm [.000030] MIN NICKEL PER QQ-N-290.
- △ GOLD PLATING NEED NOT APPEAR IN THIS AREA.
- △ REVERSE REELED FOR MINI-APPLICATOR.
- 7 WIRE RANGE 26-24 AWG. INSULATION RANGE 0.89[.035]-1.40[.055].
- △ 0.38µm [.000015] MIN GOLD PER MIL-G-45204 ON MATING END FOR A LENGTH OF 5.08 [.200] MIN, 1.27µm [.000050] MIN TIN-LEAD PER MIL-T-10727 FOR A LENGTH OF 5.69 [.224] MIN ON OPPOSITE END, BOTH OVER 1.27µm [.000050] MIN NICKEL PER QQ-N-290 ON ENTIRE CONTACT.
- △ 1.27µm [.000050] MIN TIN PER MIL-T-10727 OVER 0.76µm [.000030] MIN NICKEL PER QQ-N-290.
- △ 0.38µm [.000015] MIN GOLD PER MIL-G-45204 ON MATING END FOR A LENGTH OF 5.08 [.200] MIN, 1.27µm [.000050] TIN PER MIL-T-10727 FOR A LENGTH OF 5.69 [.224] MIN ON OPPOSITE END, BOTH OVER 1.27µm [.000050] MIN NICKEL PER QQ-N-290 ON ENTIRE CONTACT.

STANDARD	REELING	BODY FINISH	LOOSE PIECE REF	PART NO
STANDARD	△	△	1-66109-7	1-66108-7
OBSOLETE	△	△	-	1-66108-6
△	△	△	1-66109-7	1-66108-5
△	△	△	1-66109-3	1-66108-4
△	△	△	66109-4	66108-8
△	△	△	66109-3	66108-7
△	△	△	66109-2	66108-6
△	△	△	66109-1	66108-5
STANDARD	△	△	66109-4	66108-4
STANDARD	△	△	66109-3	66108-3
STANDARD	△	△	66109-2	66108-2
STANDARD	△	△	66109-1	66108-1

THIS DRAWING IS A CONTROLLED DOCUMENT.

INCHES DIMENSIONS: 0 PLC, 1 PLC, 2 PLC, 3 PLC, 4 PLC, ANGLES

DATE: 08/06/91, 9-19-91, 9-20-91

DESIGNER: R. SHIBBY, S. STONE, J. WESTMAN

PRODUCT SPEC: ---

APPLICATION SPEC: ---

HEIGHT: ---

MATERIAL: SEE CALLOUTS

FINISH: SEE CALLOUTS

SIZE: A2, CASE CODE: 00779, DRAWING NO: C-66108

RESTRICTED TO: ---

CUSTOMER DRAWING, SCALE: 8:1, SHEET: 1 of 1, REV: AG3