

4

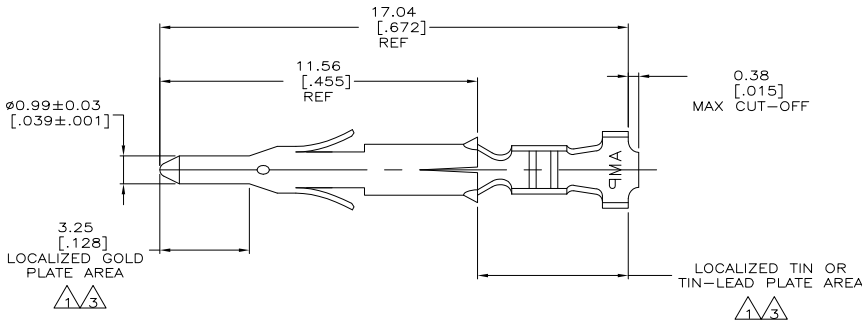
3

2

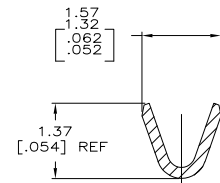
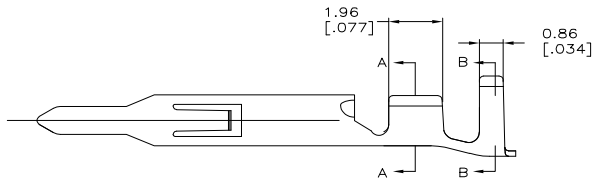
1

THIS DRAWING IS UNPUBLISHED. RELEASED FOR PUBLICATION
 BY TYCO ELECTRONICS CORPORATION. ALL RIGHTS RESERVED.

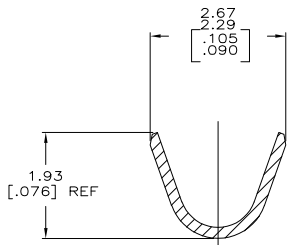
LOC	DIST	REVISIONS		
F	LR	DESCRIPTION	DATE	BY
CM	00			
	E1	EC 003B 0214 05	22AUG05	BSV CJ



- 1. 0.00076 [0.00030] MIN GOLD IN LOCALIZED GOLD PLATE AREA AND 0.00254 [0.00100] MIN BRIGHT TIN-LEAD IN LOCALIZED TIN-LEAD PLATE AREA OVER 0.0013 [0.00050] MIN NICKEL.
- 2. WIRE RANGE: 0.5 - 0.15mm² (30-26 AWG). mm
- 3. 0.00076 [0.00030] MIN GOLD IN LOCALIZED GOLD PLATE AREA AND 0.00254 [0.00100] MIN MATTE TIN IN LOCALIZED TIN PLATE AREA OVER 0.0013 [0.00050] MIN NICKEL.



SECTION A-A
SCALE 20:1



SECTION B-B
SCALE 20:1



3	0.20 [.008] BRASS	1-794059-0
1	0.20 [.008] BRASS	794059-3
PRE-TIN	0.20 [.008] BRASS	794059-1
FINISH	MATERIAL	PART NUMBER

THIS DRAWING IS A CONTROLLED DOCUMENT.		DRN S. HOOVER 05MAR03	Tyco Electronics Corporation	
DIMENSIONS: mm [INCHES]		CHK C. JONES 05MAR03	Harrisburg, PA 17105-3608	
TOLERANCES UNLESS OTHERWISE SPECIFIED:		APPD C. JONES	NAME	
0 PLG	±	PRODUCT SPEC	PIN, LOOSE PIECE	
1 PLG	±	APPLICATION SPEC	MINI UNIVERSAL MATE-N-LOK(TM)	
2 PLG	±	WEIGHT	SIZE	CAGE CODE
3 PLG	± 0.1% (0.05)	FINISH	A2	00779
4 PLG	±		C	794059
ANGLES	±			
MATERIAL		CUSTOMER DRAWING		RESTRICTED TO
		SCALE 10:1		SHEET 1 of 1
				REV E1