

4

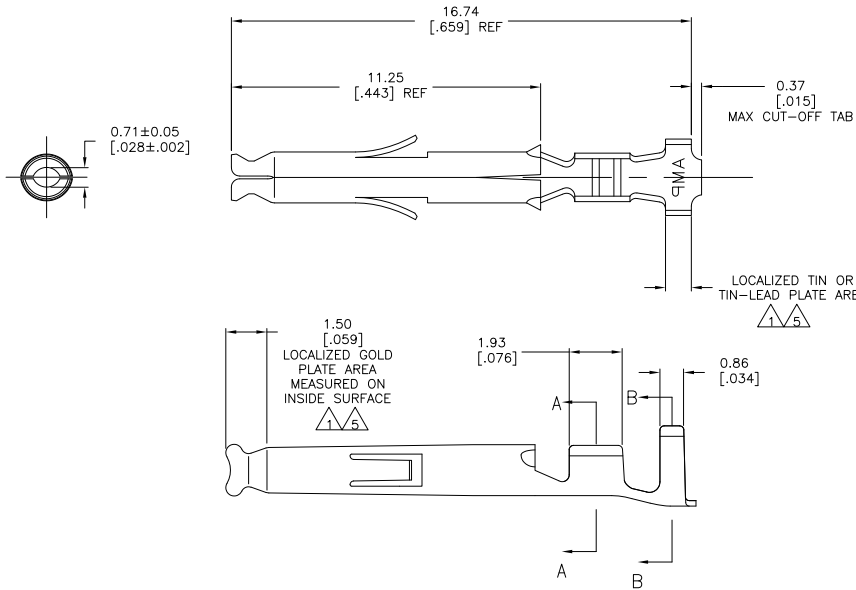
3

2

1

THIS DRAWING IS UNPUBLISHED. RELEASED FOR PUBLICATION. ALL RIGHTS RESERVED.

LOC	DIST	REVISIONS		DATE	BY	APP'D
CM	00	F	LNK			
		H2	REVISED PER ECO-11-004820	11MAR11	RK	HMR



- △ 0.00076 [0.00030] MIN GOLD IN LOCALIZED GOLD PLATE AREA AND 0.00254 [0.00100] MIN BRIGHT TIN-LEAD IN LOCALIZED TIN-LEAD PLATE AREA OVER 0.0013 [0.00050] MIN NICKEL.
- 2. WIRE RANGE: 0.12-0.4mm<sup>2</sup> (26-22 AWG).
- 3. INSULATION RANGE: 1.20-1.75 [.047-.069] DIA.
- 4. DIMENSIONS IN BRACKETS ARE IN INCHES.
- △ 5 0.00076 [0.00030] MIN GOLD IN LOCALIZED GOLD PLATE AREA AND 0.00254 [0.00100] MIN BRIGHT TIN IN LOCALIZED TIN PLATE AREA OVER 0.0013 [0.00050] MIN NICKEL.
- △ 6 OBSOLETE PARTS: OBSOLETE CIS STREAMLINING PER D.RENAUD/D.SINISI

△ 6	OBSOLETE	△ 5	0.20 [.008] PH BRZ	1-770986-1
		△ 5	0.20 [.008] BRASS	1-770986-0
		△ 1	0.20 [.008] BRASS	770986-3
	PRE-TIN		0.20 [.008] BRASS	770986-1
	FINISH		MATERIAL	PART NUMBER

DIMENSIONS:		TOLERANCES UNLESS OTHERWISE SPECIFIED:		DRAWN		CHECKED		APPROVED	
mm [INCHES]		0 PLC ± .015 [0.006]		S. HOOVER 1800702		S. HOOVER 1800702		S. HOOVER 1800702	
		1 PLC ± .010 [0.004]		C. JONES 1800702		C. JONES 1800702		C. JONES 1800702	
		2 PLC ± .005 [0.002]		D. JONES 1800702		D. JONES 1800702		D. JONES 1800702	
		3 PLC ± .002 [0.001]							
		4 PLC ± .001 [0.0005]							
		ANGLES ± .1°							
MATERIAL		FINISH		APPLICATION SPEC:		WEIGHT:		SIZE CASE CODE DRAWING NO	
SEE TABLE		SEE TABLE		CUSTOMER DRAWING		A2 00779 C=770986		RESTRICTED TO	
								SCALE 10:1 SHEET 1 of 1 REV H2	

METRIC