

4

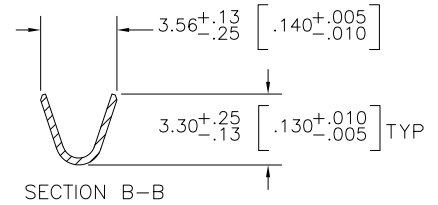
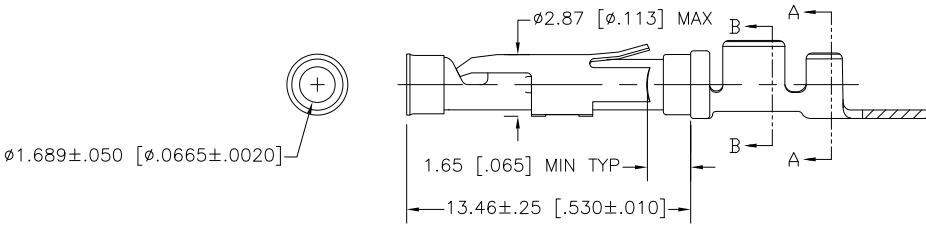
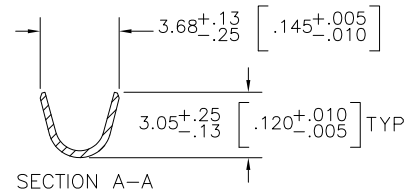
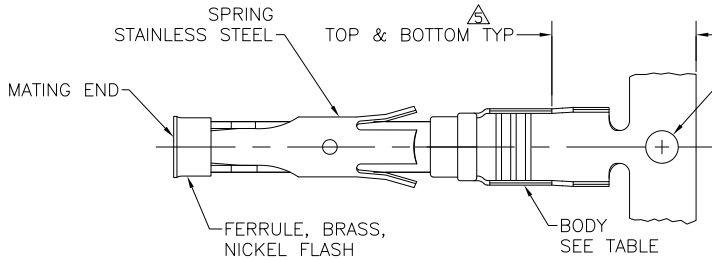
3

2

1

THIS DRAWING IS UNPUBLISHED. RELEASED FOR PUBLICATION. ALL RIGHTS RESERVED.

LOC	DIST	REVISIONS		DATE	BY	APP'D
FT	0	F	LR	DESCRIPTION		
		AF1		REVISED PER ECO-11-004587	11MAR11	RK HMR



- 1.  $0.76\mu\text{m} [0.00030]$  MIN GOLD PER MIL-G-45204 ON MATING END FOR A LENGTH OF 5.08 [.200] MIN WITH GOLD FLASH ON THE REMAINDER OVER  $0.76\mu\text{m} [0.00030]$  MIN NICKEL PER QQ-N-290.
- 2.  $1.27\mu\text{m} [0.00050]$  MIN TIN-LEAD PER MIL-T-10727 OVER  $0.76\mu\text{m} [0.00030]$  MIN NICKEL PER QQ-N-290.
- 3.  $0.76\mu\text{m} [0.00030]$  MIN GOLD PER MIL-G-45204 ON MATING END FOR A LENGTH OF 5.08 [.200] MIN WITH A UNIFORM GRADIENT TO 0.25 [.00010] MIN GOLD PER MIL-G-45204 ON THE REMAINDER OVER  $0.76\mu\text{m} [0.00030]$  MIN NICKEL PER QQ-N-290.
- 4.  $0.38\mu\text{m} [0.00015]$  MIN GOLD PER MIL-G-45204 ON MATING END FOR A LENGTH OF 5.08 [.200] MIN WITH GOLD FLASH ON THE REMAINDER OVER  $0.76\mu\text{m} [0.00030]$  MIN NICKEL PER QQ-N-290.
- 5. GOLD PLATING NEED NOT APPEAR IN THIS AREA.
- 6. REVERSE REELED FOR MINI-APPLICATOR.
- 7. WIRE RANGE 18-14 AWG. INSULATION RANGE 2.03[.080]-2.54[.100].
- 8.  $0.38\mu\text{m} [0.00015]$  MIN GOLD PER MIL-G-45204 ON MATING END FOR A LENGTH OF 5.08 [.200] MIN,  $1.27\mu\text{m} [0.00050]$  MIN TIN-LEAD PER MIL-T-10727 FOR A LENGTH OF 5.08 [.200] MIN ON OPPOSITE END, BOTH OVER  $1.27\mu\text{m} [0.00050]$  MIN NICKEL PER QQ-N-290 ON ENTIRE CONTACT.
- 9.  $1.27\mu\text{m} [0.00050]$  MIN TIN PER MIL-T-10727 OVER  $0.6\mu\text{m} [0.00030]$  MIN NICKEL PER QQ-N-290.
- 10.  $2.54\mu\text{m} [0.00100]$  MIN SILVER OVER  $0.76\mu\text{m} [0.00030]$  MIN NICKEL PER QQ-N-290.
- 11. OBSOLETE PARTS: OBSOLETE CIS STREAMLINING PER D.RENAUD/D.SINISI

REELING	BODY FINISH	BODY MATERIAL	LOOSE PIECE REF	PART NO.
▲	▲	BRASS	-	2-66358-3
▲	▲	BRASS	-	2-66358-2
▲	▲	CU-NI ALLOY	1-66360-6	2-66358-1
▲	▲	CU-NI ALLOY	1-66360-5	2-66358-0
▲	▲	CU-NI ALLOY	1-66360-4	1-66358-9
▲	▲	PHOSPHOR BRONZE	-	1-66358-8
STANDARD	▲	BRASS	1-66360-2	1-66358-7
STANDARD	▲	BRASS	1-66360-2	1-66358-6
STANDARD	▲	BRASS	66360-9	1-66358-5
STANDARD	▲	BRASS	-	1-66358-4
▲	▲	PHOSPHOR BRONZE	66360-8	1-66358-3
▲	▲	PHOSPHOR BRONZE	66360-7	1-66358-2
▲	▲	BRASS	66360-4	1-66358-0
▲	▲	BRASS	66360-3	66358-9
▲	▲	BRASS	66360-2	66358-6
▲	▲	BRASS	66360-1	66358-5
STANDARD	▲	BRASS	66360-4	66358-4
STANDARD	▲	BRASS	66360-3	66358-3
STANDARD	▲	BRASS	66360-2	66358-2
STANDARD	▲	BRASS	66360-1	66358-1
REELING	▲	BRASS	-	66358-0

THIS DRAWING IS A CONTROLLED DOCUMENT. DWG V. FURLER 23MAR2003

CHK G. STEINHAUER 23MAR03

APP'D G. STEINHAUER 23MAR03 NAME

PRODUCT SPEC

APPLICATION SPEC

WEIGHT

SIZE CASE CODE DRAWING NO

A2 00779 C-66358

RESTRICTED TO

CUSTOMER DRAWING SCALE 8:1 SHEET 1 of 1 REV AF1