

4

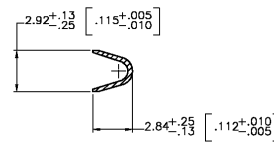
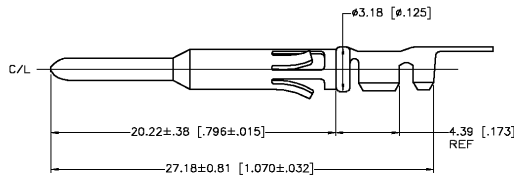
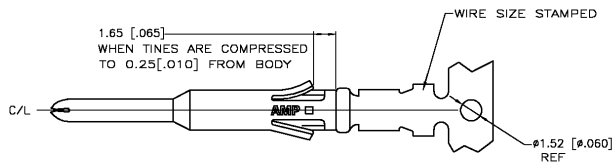
3

2

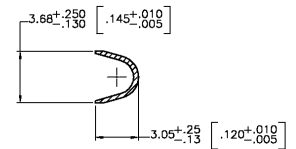
1

THIS DRAWING IS UNPUBLISHED. RELEASED FOR PUBLICATION  
 © COPYRIGHT - BY TYCO ELECTRONICS CORPORATION. ALL RIGHTS RESERVED.

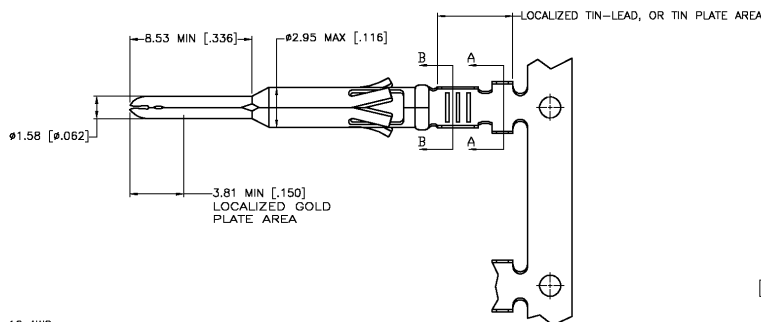
LOC	DIST	REVISIONS				
P	LTR	DESCRIPTION	DATE	DWN	APVD	
G		REV PER EC OG3B-0317-03	24APR03	VF	GS	



SECTION B-B



SECTION A-A



1. WIRE RANGE 18-16 AWG.
  2. INSULATION RANGE 2.54-2.03 [.100-.080] DIA.
  3. FOR LOOSE PIECE PART SEE DWG 66589.
- △ 0.75µm [.000030] MIN GOLD IN LOCALIZED GOLD PLATE AREA.
  - 1.27µm [.000050] MIN TIN-LEAD IN LOCALIZED TIN-LEAD PLATE AREA, BOTH OVER 1.27µm [.000050] MIN NICKEL.
  - △ TIN PLATED.
  - △ 2.54µm [.000100] MIN SILVER OVER 1.27µm [.000050] MIN NICKEL.
  - △ GOLD PLATING PER MIL-G-45204, SILVER PER QQ-S-365, TIN PER MIL-T-10727 AND NICKEL PER QQ-N-290.
  - △ 0.75µm [.000030] MIN GOLD IN LOCALIZED GOLD PLATE AREA.
  - 1.27µm [.000050] MIN TIN IN LOCALIZED TIN PLATE AREA, BOTH OVER 1.27µm [.000050] MIN NICKEL.

REVERSE REELED FOR MINI-APPLICATOR	△	66579-7
REVERSE REELED FOR MINI-APPLICATOR	△	66579-6
REVERSE REELED FOR MINI-APPLICATOR	△	66579-4
REVERSE REELED FOR MINI-APPLICATOR	△	66579-3
REVERSE REELED FOR MINI-APPLICATOR	△	66579-2
REVERSE REELED FOR MINI-APPLICATOR	△	66579-1
DESCRIPTION	FINISH	

THIS DRAWING IS A CONTROLLED DOCUMENT.

DIMENSIONS: MM [INCHES]	TOLERANCES UNLESS OTHERWISE SPECIFIED: 0 PLC ± - 1 PLC ± - 2 PLC ± 0.13 [.005] 3 PLC ± - 4 PLC ± - ANGLES ± -	DWN V. FURLER 14MAY2003		Tyco Electronics Corporation Harrisburg, PA 17105
MATERIAL BRASS MIL-C-50	FINISH SEE TABLE △	CHK G. STEINHAUER 16MAY03		APVD G. STEINHAUER 16MAY03
		PRODUCT SPEC APPLICATION SPEC WEIGHT	SIZE A3	CAGE CODE 00779
		CUSTOMER DRAWING	DRAWING NO C-66579	RESTRICTED TO
			SCALE 8:5	SHEET 1 OF 1

AMP 1470-19 REV 31MAR2000

H:\