

4

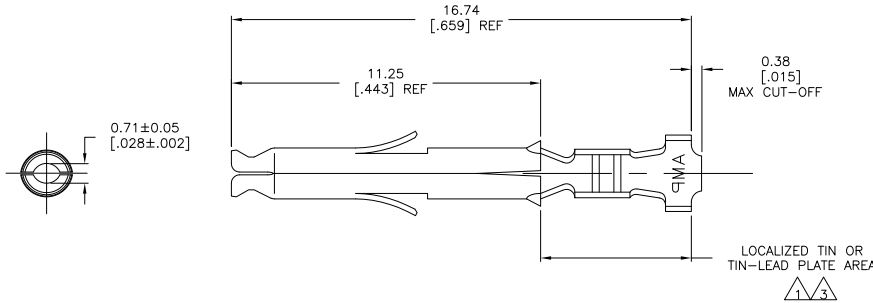
3

2

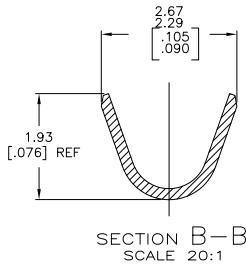
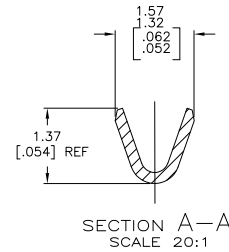
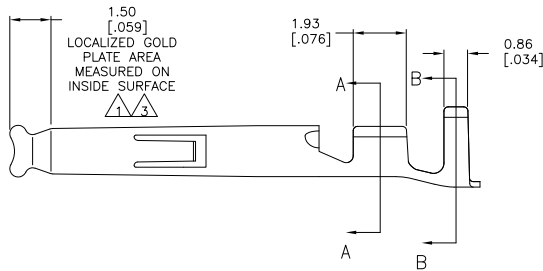
1

THIS DRAWING IS UNPUBLISHED. RELEASED FOR PUBLICATION. BY TYCO ELECTRONICS CORPORATION. ALL INTERNATIONAL RIGHTS RESERVED.

LOC	DIST	REVISIONS			
F	LN	DESCRIPTION	DATE	BY	APPD
CM	00				
	G1	REVISED PER ECO-08-030379	05DEC08	HMR	CJ



- 1 0.00076 [.000030] MIN GOLD IN LOCALIZED GOLD PLATE AREA AND 0.00254 [.000100] MIN BRIGHT TIN-LEAD IN LOCALIZED TIN-LEAD PLATE AREA OVER 0.0013 [.000050] MIN NICKEL.
- 2 WIRE RANGE: 0.5-0.15mm<sup>2</sup> (30-26 AWG).
- 3 0.00076 [.000030] MIN GOLD IN LOCALIZED GOLD PLATE AREA AND 0.00254 [.000100] MIN MATTE TIN IN LOCALIZED TIN PLATE AREA OVER 0.0013 [.000050] MIN NICKEL.



3	0.20 [.008] PH BRZ	1-794058-1
3	0.20 [.008] BRASS	1-794058-0
1	0.20 [.008] BRASS	794058-3
PRE-TIN	0.20 [.008] BRASS	794058-1
FINISH	MATERIAL	PART NUMBER

THIS DRAWING IS A CONTROLLED DOCUMENT.		DRN S. HOOVER 180CT02	Tyco Electronics Corporation Harrisburg, PA 17105-3608	
DIMENSIONS: mm [INCHES]		CHK C. JONES 180CT02	SOCKET	
TOLERANCES UNLESS OTHERWISE SPECIFIED:		APPD C. JONES 180CT02	MINI UNIVERSAL MATE-N-LOK(TM)	
0 PLC ± .-		PRODUCT SPEC	SIZE	CAGE CODE DRAWING NO
1 PLC ± .-		APPLICATION SPEC	A2	00779 C=794058
2 PLC ± .-		WEIGHT	SCALE	RESTRICTED TO
3 PLC ± 0.15[.006]			10:1	1 of 1
4 PLC ± .-				REV G1
ANGLES ± .-				
MATERIAL	FINISH	CUSTOMER DRAWING		

METRIC